

PHOSPHO-CARDIAC TROPONIN I (SER22/SER23) RABBIT PAB

货号: N225424

产品全名: Phospho-Cardiac Troponin I (Ser22/Ser23) 兔多抗

基因符号 TNNI3; TNNC1; Troponin I; cardiac muscle; Cardiac troponin I

UNIPROT ID: P23693

背景: Troponin I (TnI), along with troponin T (TnT) and troponin C (TnC), is one of 3 subunits that form the troponin complex of the thin filaments of striated muscle. TnI is the inhibitory subunit; blocking actin-myosin interactions and thereby mediating striated muscle relaxation. The TnI subfamily contains three genes: tni-skeletal-fast-twitch, TnI-skeletal-slow-twitch, and TnI-cardiac. This gene encodes the TnI-cardiac protein and is exclusively expressed in cardiac muscle tissues. Mutations in this gene cause familial hypertrophic cardiomyopathy type 7 (CMH7) and familial restrictive cardiomyopathy (RCM).

抗原: The antiserum was produced against synthesized peptide derived from rat TNNI3 around the phosphorylation site of Ser22 and Ser23. AA range:5-54

经过测试的应用: WB,IHC-P,ELISA

推荐稀释比: WB: 1/500-1/1000 IHC: 1/50-1/100 ELISA: 1/10000

种属反应性: Rabbit

克隆性: Rabbit Polyclonal

分子量: Calculated MW: 24 kDa; Observed MW: 28 kDa

亚型: IgG

纯化: Affinity Chromatography

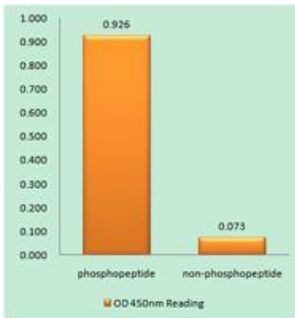
种属反应性: Mouse,Rat

Modification: Phosphorylated

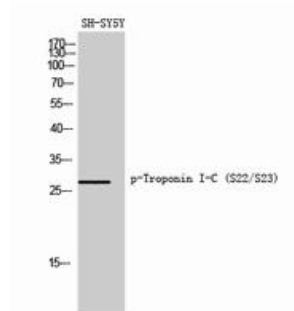
成分: PBS (without Mg²⁺ and Ca²⁺), pH 7.3 containing 50% glycerol, 0.5% BSA and 0.02% sodium azide

研究领域: Signal Transduction

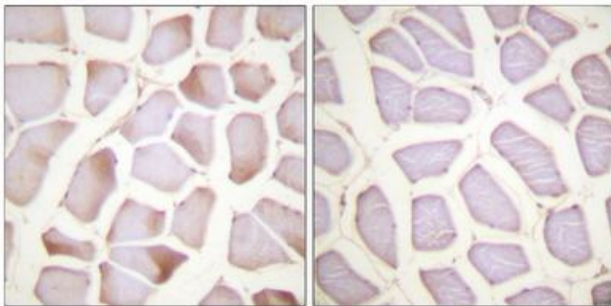
储存和运输: Store at -20°C. Avoid repeated freezing and thawing



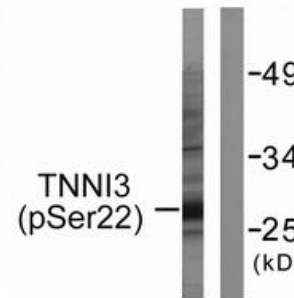
EnzymeLinked Immunosorbent Assay (Phospho-ELISA) for Immunogen Phospho-peptide (Phospho-left) and NonPhospho-peptide (Phospho-right), using TNNI3 (Phospho-Ser22+Ser23) antibody.



Western blot analysis of Phospho-Cardiac Troponin I (Ser22/Ser23) in SH-SY5Y lysates using Phospho-Cardiac Troponin I (Ser22/Ser23) antibody.



Immunohistochemistry analysis of paraffin-embedded Human skeletal muscle using TNNI3 (Phospho-Ser22+Ser23) antibody. High-pressure and temperature Sodium Citrate pH 6.0 was used for antigen retrieval. Sample with blocking peptide on the right.



Western blot analysis of Phospho-Cardiac Troponin I (Ser22/Ser23) in mouse heart lysates using Phospho-Cardiac Troponin I (Ser22/Ser23) antibody. The lane on the right is blocked with the Phospho-peptide.