

## PHOSPHO-CAD (THR456) RABBIT PAB

货号: N225311

产品全名: Phospho-CAD (Thr456) 兔多抗

基因符号 CAD; CAD 蛋白

**UNIPROT ID:** P27708

背景: Carbamoyl phosphate synthetase-aspartate carbamoyltransferase-dihydroorotase (CAD) is a multifunctional protein that initiates and regulates mammalian de novo pyrimidine biosynthesis.

抗原: Synthetic peptide of human CAD

经过测试的应用: IHC-P

推荐稀释比: IHC: 1/50-1/100

种属反应性: Rabbit

克隆性: Rabbit Polyclonal

分子量: -

亚型: IgG

纯化: Affinity Purified

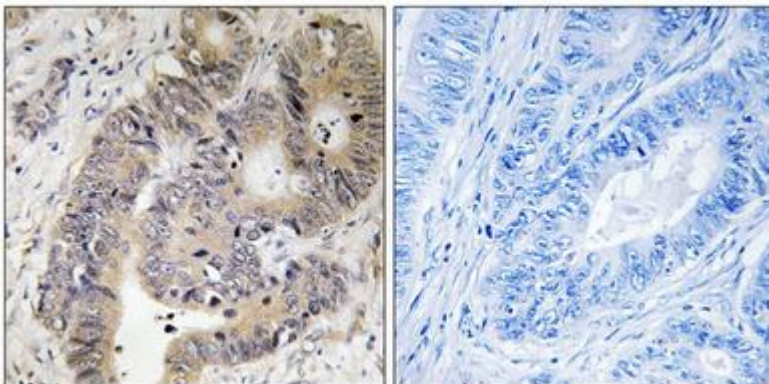
种属反应性: Human

**Modification:** Phosphorylated

成分: PBS (without Mg<sup>2+</sup> and Ca<sup>2+</sup>), pH 7.3 containing 50% glycerol, 0.5% BSA and 0.02% sodium azide

研究领域: Cell Biology

储存和运输: Store at -20°C. Avoid repeated freezing and thawing



Immunohistochemistry analysis of paraffin-embedded Human colon carcinoma tissue using Phospho-CAD (Thr456) antibody. High-pressure and temperature Sodium Citrate pH 6.0 was used for antigen retrieval. Sample with blocking peptide on the right.



# Product Description

Pioneering GTPase and Oncogene Product Development since 2010

---