

## PHOSPHO-C-MET (TYR1349) RABBIT MAB

货号: N263178

产品全名: Phospho-c-Met (Tyr1349) 兔单克隆抗体

基因符号 MET; Hepatocyte growth factor receptor; HGF receptor; HGF/SF receptor; Proto-oncogene c-Met; Scatter factor receptor; SF receptor; Tyrosine-protein kinase Met

**UNIPROT ID:** P08581

背景: The proto-oncogene MET product is the hepatocyte growth factor receptor and encodes tyrosine-kinase activity. The primary single chain precursor protein is post-translationally cleaved to produce the alpha and beta subunits, which are disulfide linked to form the mature receptor.

抗原: A synthetic phosphopeptide corresponding to residues surrounding Tyr1349 of human Met

经过测试的应用: WB,IP

推荐稀释比: WB: 1/500-1/1000 IP: 1/20

种属反应性: Rabbit

克隆性: Rabbit Monoclonal

克隆编号: R05-3D6

分子量: Calculated MW: 156 kDa; Observed MW: 170,140 kDa

亚型: IgG

纯化: Affinity Purified

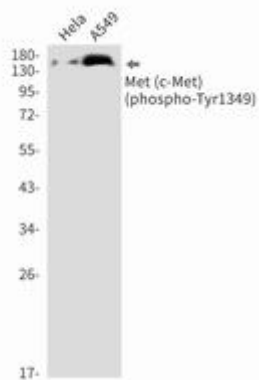
种属反应性: Human

**Modification:** Phosphorylated

成分: PBS (without Mg<sup>2+</sup> and Ca<sup>2+</sup>), pH 7.3 containing 50% glycerol, 0.5% BSA and 0.02% sodium azide

研究领域: Signal Transduction

储存和运输: Store at -20°C. Avoid repeated freezing and thawing



Western blot analysis of Phospho-Met (c-Met) (Tyr1349) in HeLa, A549 lysates using Phospho-c-Met (Tyr1349) antibody.