

## PHOSPHO-BETA CATENIN (SER37) RABBIT PAB

货号: N225377

产品全名: Phospho-beta Catenin (Ser37) 兔多抗

基因符号 CTNBN1; CTNBN; OK/SW-cl.35; Catenin beta-1; Beta-catenin

**UNIPROT ID:** P35222

**背景:** Beta-catenin is an adherens junction protein. Adherens junctions (AJs; also called the zonula adherens) are critical for the establishment and maintenance of epithelial layers, such as those lining organ surfaces. AJs mediate adhesion between cells, communicate a signal that neighboring cells are present, and anchor the actin cytoskeleton. In serving these roles, AJs regulate normal cell growth and behavior.

**抗原:** The antiserum was produced against synthesized peptide derived from human Catenin-beta around the phosphorylation site of Ser37. AA range:3-52

**经过测试的应用:** WB,IHC-F,IHC-P,ICC/IF,ELISA

**推荐稀释比:** WB: 1/500-1/1000 IHC: 1/50-1/100 IF: 1/50-1/200 ELISA: 1/10000

**种属反应性:** Rabbit

**克隆性:** Rabbit Polyclonal

**分子量:** Calculated MW: 85 kDa; Observed MW: 85 kDa

**亚型:** IgG

**纯化:** Affinity Purified

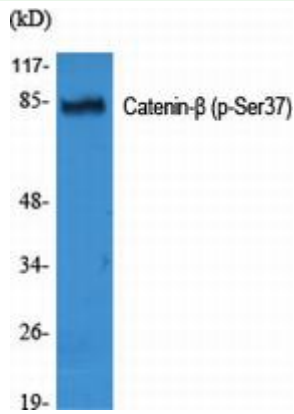
**种属反应性:** Human, Mouse and Rat

**Modification:** Phosphorylated

**成分:** PBS (without Mg<sup>2+</sup> and Ca<sup>2+</sup>), pH 7.3 containing 50% glycerol, 0.5% BSA and 0.02% sodium azide

**研究领域:** Cell Biology

**储存和运输:** Store at -20°C. Avoid repeated freezing and thawing



Western blot analysis of Phospho-beta Catenin (Ser37) in various lysates using Phospho-beta Catenin (Ser37) antibody.