

## PHF21A RABBIT PAB

货号: S218360

产品全名: PHF21A 兔多抗

基因符号: BHC80; BM-006

**UNIPROT ID:** Q96BD5 (Gene Accession - BC015714)

**背景:** Zinc-finger proteins contain DNA-binding domains and have a wide variety of functions, most of which encompass some form of transcriptional activation or repression. PHF21A (PHD finger protein 21A), also known as BRAF35-HDAC complex protein BHC80, is a 680 amino acid nuclear protein that contains one PHD-type zinc finger and one A.T hook DNA-binding domain, suggesting involvement in transcriptional regulation events. PHF21A is a component of the BHC complex which is responsible for repressing transcription of neuron-specific genes in non-neuronal cells. The BHC complex acts as a chromatin modifier that deacetylates and demethylates specific sites on histones. PHF21A may act as a scaffold within the BHC complex. Predominantly expressed in brain, three isoforms of PHF21A exist as a result of alternative splicing events.

**抗原:** Fusion protein of human PHF21A

**经过测试的应用:** ELISA, WB, IHC

**推荐稀释比:** IHC: 40-200;WB: 500-2000;ELISA: 5000-10000

**种属反应性:** Rabbit

**克隆性:** Rabbit Polyclonal

**亚型:** Immunogen-specific rabbit IgG

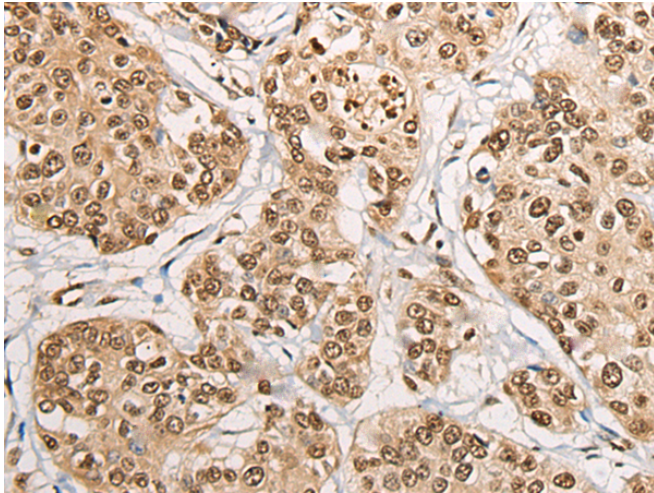
**纯化:** Antigen affinity purification

**种属反应性:** Human, Mouse

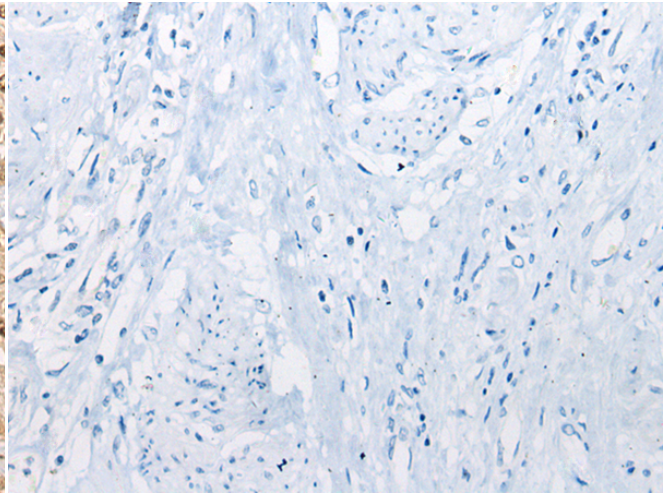
**成分:** PBS (without Mg<sup>2+</sup> and Ca<sup>2+</sup>), pH 7.4, 150 mM NaCl, 0.05% Sodium Azide and 40% glycerol

**研究领域:** Epigenetics and Nuclear Signaling, Neuroscience

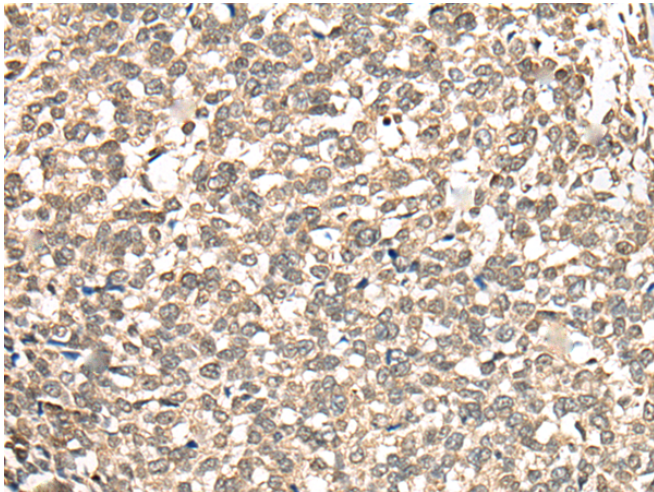
**储存和运输:** Store at -20°C. Avoid repeated freezing and thawing



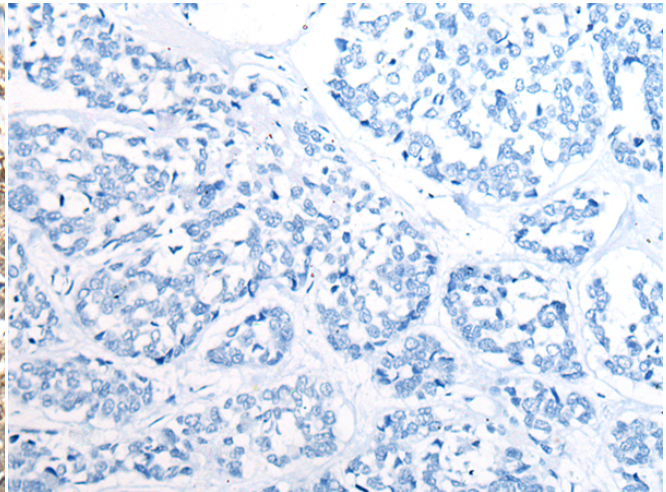
Immunohistochemistry analysis of paraffin embedded Human prostate cancer tissue using 218360(PHF21A Antibody) at a dilution of 1/50(Cytoplasm and Nucleus).



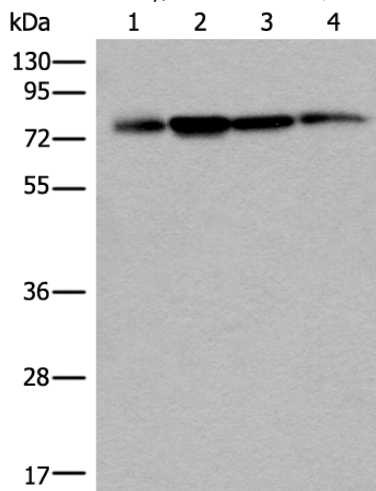
In comparison with the IHC on the left, the same paraffin-embedded Human prostate cancer tissue is first treated with the fusion protein and then with 218360(Anti-PHF21A Antibody) at dilution 1/50.



The image on the left is immunohistochemistry of paraffin-embedded Human esophagus cancer tissue using 218360(Anti-PHF21A Antibody) at a dilution of 1/50.



In comparison with the IHC on the left, the same paraffin-embedded Human esophagus cancer tissue is first treated with fusion protein and then with D224255(Anti-PHF21A Antibody) at dilution 1/50.



Gel: 8%SDS-PAGE, Lysate: 40 µg;  
Lane 1-4:A172, 293T, Hela and A375 cell lysates;  
Primary antibody: 218360(PHF21A Antibody) at dilution 1/400;  
Secondary antibody: Goat anti rabbit IgG at 1/8000 dilution;  
Exposure time: 3 seconds



# Product Description

Pioneering GTPase and Oncogene Product Development since 2010

---