

## PHAPI2 RABBIT MAB

货号: N262708

产品全名: PHAPI2 兔单克隆抗体

基因符号 ANP32B; PAL31; PHAPI2; PHAPI2 $\alpha$ ; Ssp29

**UNIPROT ID:** Q92688

背景: Multifunctional protein working as a cell cycle progression factor as well as a cell survival factor. Required for the progression from the G1 to the S phase.

抗原: A synthetic peptide of human PHAPI2

经过测试的应用: WB,IHC-F,IHC-P,ICC/IF

推荐稀释比: WB: 1/500-1/1000 IHC: 1/50-1/100 IF: 1/50-1/200

种属反应性: Rabbit

克隆性: Rabbit Monoclonal

克隆编号: R03-6H2

分子量: Calculated MW: 29 kDa; Observed MW: 29 kDa

亚型: IgG

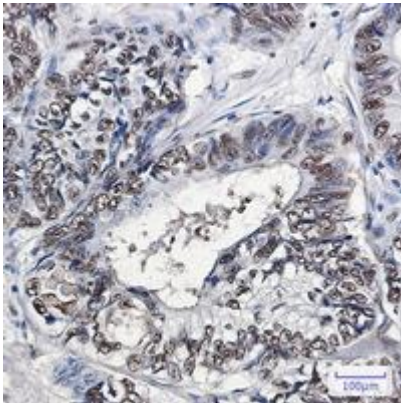
纯化: Affinity Purified

种属反应性: Human,Rat

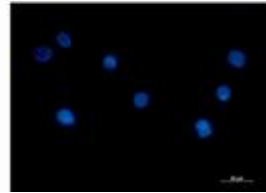
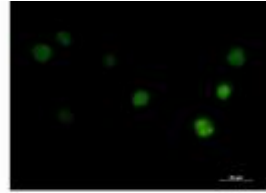
成分: PBS (without Mg<sup>2+</sup> and Ca<sup>2+</sup>), pH 7.3 containing 50% glycerol, 0.5% BSA and 0.02% sodium azide

研究领域: Cell Biology

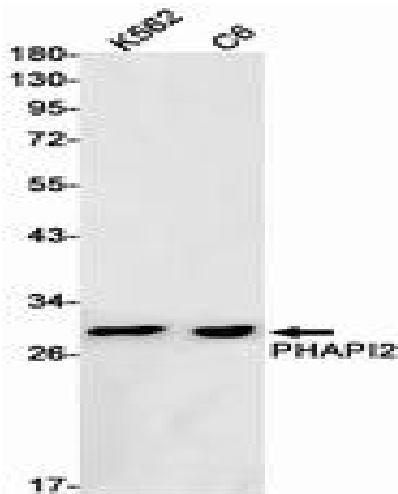
储存和运输: Store at -20°C. Avoid repeated freezing and thawing



Immunohistochemistry analysis of paraffin-embedded Human colon cancer tissue using PHAPI2/APRIL antibody. High-pressure and temperature Sodium Citrate pH 6.0 was used for antigen retrieval.



Immunocytochemistry analysis of PHAPI2 (green) in K562 using PHAPI2 antibody, and DAPI (blue).



Western blot analysis of PHAPI2 in K562, C6 lysates using PHAPI2 antibody.