

PGRMC2 RABBIT PAB

货号: S211421

产品全名: PGRMC2 兔多抗

基因符号: DG6; PMBP

UNIPROT ID: O15173 (Gene Accession - BC016692)

背景: PGRMC2 (progesterone receptor membrane component 2), also known as DG6 (steroid receptor protein DG6) or PMBP (progesterone membrane-binding protein), is a single pass membrane protein belonging to the cytochrome b5 family (MAPR (membrane associated progesterone receptor) subfamily). Expressed in sperm, PGRMC2 is believed to function as a steroid receptor and may participate in the progesterone-dependent sperm acrosome reaction. PGRMC2 shares approximately 50% overall sequence identity with its close relative PGRMC1. The loss of the gene encoding PGRMC2 is associated with metastasis in uterine endocervical adenocarcinomas, implicating a potential role of PGRMC2 in the suppression of metastasis of endocervical adenocarcinomas.

抗原: Fusion protein of human PGRMC2

经过测试的应用: ELISA, WB, IHC

推荐稀释比: IHC: 50-200;WB: 500-2000;ELISA: 5000-10000

种属反应性: Rabbit

克隆性: Rabbit Polyclonal

亚型: Immunogen-specific rabbit IgG

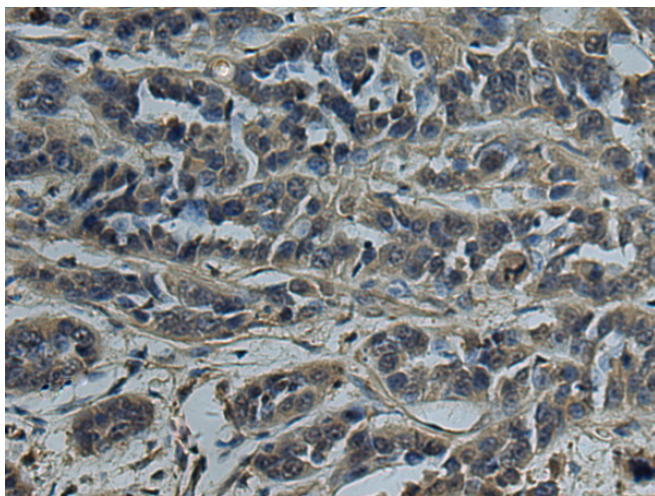
纯化: Antigen affinity purification

种属反应性: Human, Mouse, Rat

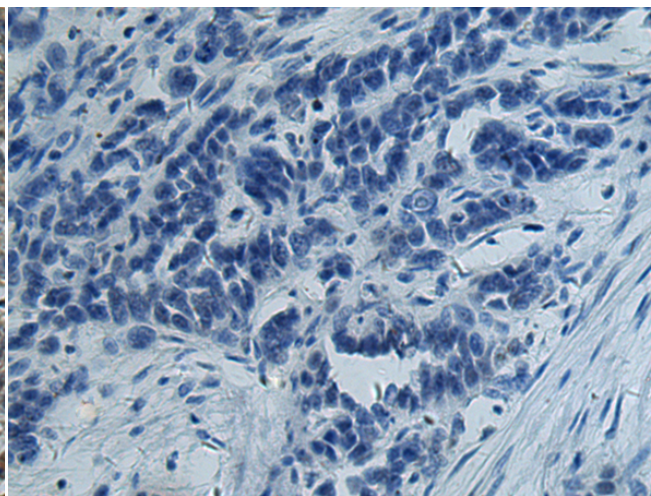
成分: PBS (without Mg²⁺ and Ca²⁺), pH 7.4, 150 mM NaCl, 0.05% Sodium Azide and 40% glycerol

研究领域: Signal Transduction

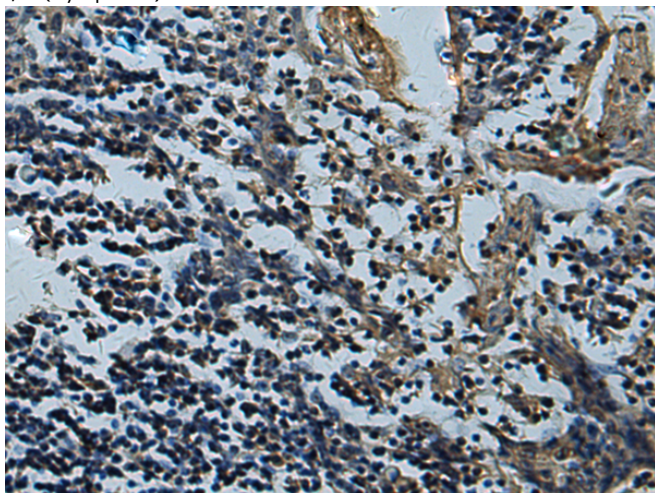
储存和运输: Store at -20°C. Avoid repeated freezing and thawing



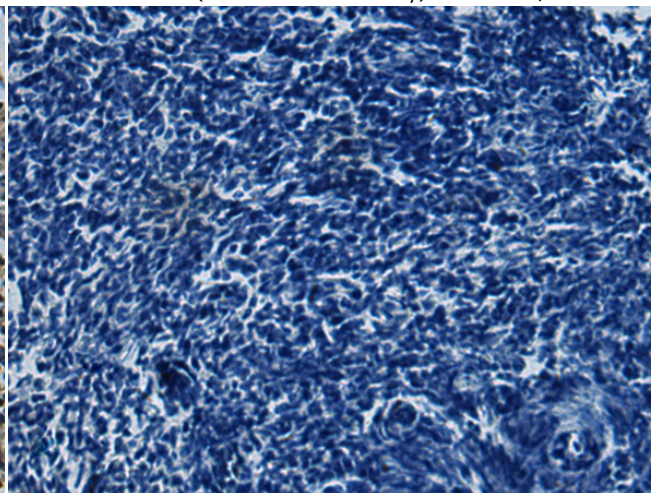
Immunohistochemistry analysis of paraffin embedded Human thyroid cancer tissue using 211421(PGRMC2 Antibody) at a dilution of 1/70(Cytoplasm).



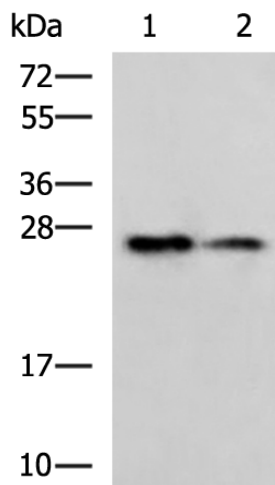
In comparison with the IHC on the left, the same paraffin-embedded Human thyroid cancer tissue is first treated with the fusion protein and then with 211421(Anti-PGRMC2 Antibody) at dilution 1/70.



The image on the left is immunohistochemistry of paraffin-embedded Human tonsil tissue using 211421(Anti-PGRMC2 Antibody) at a dilution of 1/70.



In comparison with the IHC on the left, the same paraffin-embedded Human tonsil tissue is first treated with fusion protein and then with D122869(Anti-PGRMC2 Antibody) at dilution 1/70.



Gel: 12%SDS-PAGE, Lysate: 40 µg;
 Lane 1-2: RAW264.7 and NIH/3T3 cell lysates;
 Primary antibody: 211421(PGRMC2 Antibody) at dilution 1/1000;
 Secondary antibody: HRP-conjugated Goat anti rabbit IgG at 1/5000 dilution;
 Exposure time: 1 minute



Product Description

Pioneering GTPase and Oncogene Product Development since 2010
