

PGM1 RABBIT MAB

货号: N262706

产品全名: PGM1 兔单克隆抗体

基因符号 Phosphoglucomutase-1; PGM 1; Glucose phosphomutase 1

UNIPROT ID: P36871

背景: This enzyme participates in both the breakdown and synthesis of glucose.

抗原: A synthetic peptide of human PGM1

经过测试的应用: WB, ICC/IF, IP

推荐稀释比: WB: 1/500-1/1000 IF: 1/50-1/200 IP: 1/20

种属反应性: Rabbit

克隆性: Rabbit Monoclonal

克隆编号: R08-9G3

分子量: Calculated MW: 61 kDa; Observed MW: 61 kDa

亚型: IgG

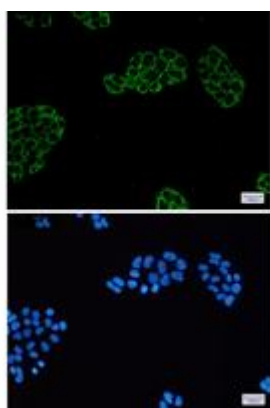
纯化: Affinity Purified

种属反应性: Human, Mouse and Rat

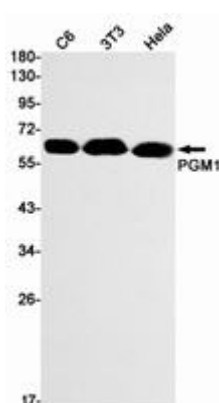
成分: PBS (without Mg²⁺ and Ca²⁺), pH 7.3 containing 50% glycerol, 0.5% BSA and 0.02% sodium azide

研究领域: Signal Transduction

储存和运输: Store at -20°C. Avoid repeated freezing and thawing



Immunocytochemistry analysis of PGM1 (green) in HeLa using PGM1 antibody, and DAPI (blue)



Western blot analysis of PGM1 in C6, 3T3, HeLa lysates using PGM1 antibody.



Product Description

Pioneering GTPase and Oncogene Product Development since 2010
