

PGF RABBIT PAB

货号: S216736

产品全名: PGF 兔多抗

基因符号: PGFL; PIGF; PLGF; PIGF-2; D12S1900; SHGC-10760

UNIPROT ID: P49763 (Gene Accession - BC001422)

背景: This gene encodes a growth factor found in placenta which is homologous to vascular endothelial growth factor. Alternatively spliced transcripts encoding different isoforms have been found for this gene.

抗原: Fusion protein of human PGF

经过测试的应用: ELISA, WB, IHC

推荐稀释比: IHC: 50-100;WB: 500-2000;ELISA: 5000-10000

种属反应性: Rabbit

克隆性: Rabbit Polyclonal

亚型: Immunogen-specific rabbit IgG

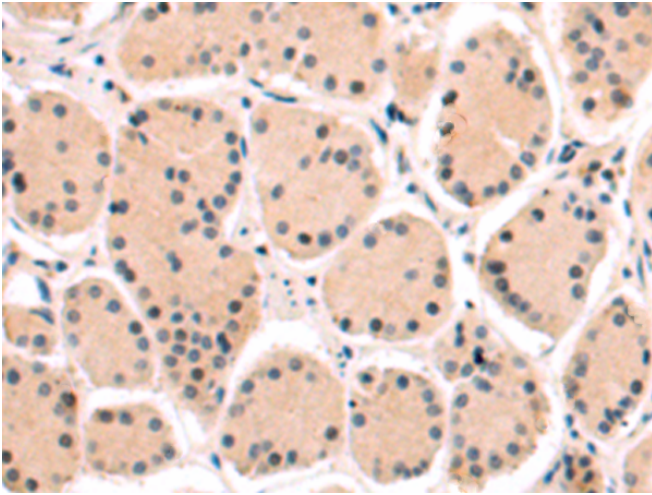
纯化: Antigen affinity purification

种属反应性: Human

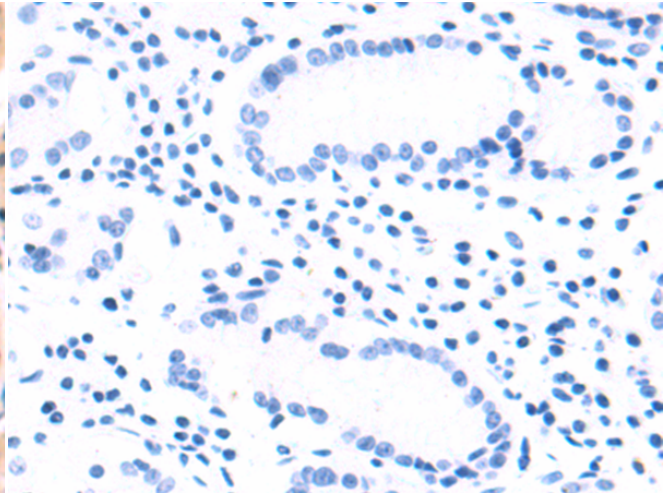
成分: PBS (without Mg²⁺ and Ca²⁺), pH 7.4, 150 mM NaCl, 0.05% Sodium Azide and 40% glycerol

研究领域: Cardiovascular, Cancer, Metabolism

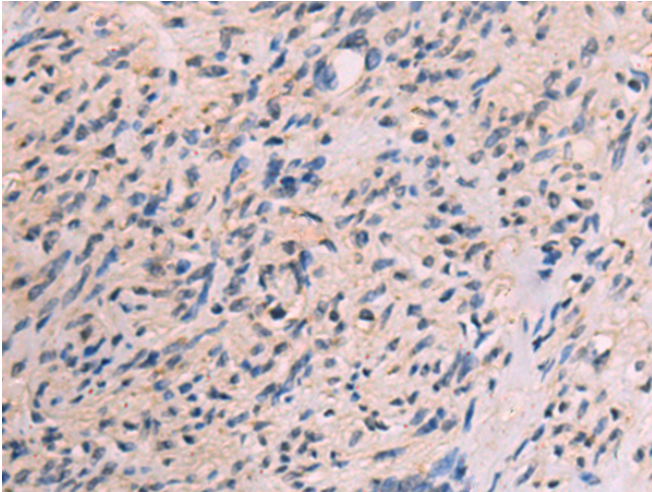
储存和运输: Store at -20°C. Avoid repeated freezing and thawing



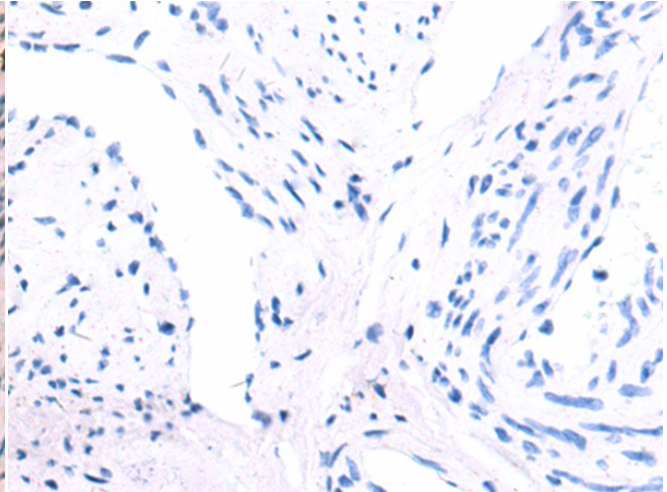
Immunohistochemistry analysis of paraffin embedded Human esophagus cancer tissue using 216736(PGF Antibody) at a dilution of 1/55 (Secreted).



In comparison with the IHC on the left, the same paraffin-embedded Human esophagus cancer tissue is first treated with the fusion protein and then with 216736 (Anti-PGF Antibody) at dilution 1/55.

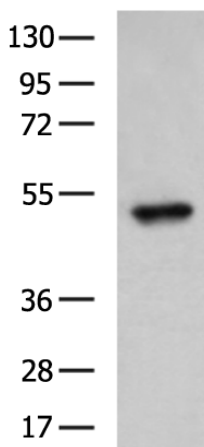


The image on the left is immunohistochemistry of paraffin-embedded Human cervical cancer tissue using 216736 (Anti-PGF Antibody) at a dilution of 1/55.



In comparison with the IHC on the left, the same paraffin-embedded Human cervical cancer tissue is first treated with fusion protein and then with D221141 (Anti-PGF Antibody) at dilution 1/55.

kDa



Gel: 8% SDS-PAGE, Lysate: 40 µg;
Lane: Human placenta tissue lysate;
Primary antibody: 216736 (PGF Antibody) at dilution 1/400;
Secondary antibody: HRP-conjugated Goat anti rabbit IgG at 1/5000 dilution;
Exposure time: 40 seconds



Product Description

Pioneering GTPase and Oncogene Product Development since 2010
