

PFKFB4 RABBIT PAB

货号: S214142

产品全名: PFKFB4 兔多抗

基因符号

UNIPROT ID: Q16877 (Gene Accession - NP_004558)

背景: The protein encoded by this gene is one of four bifunctional kinase/phosphatases that regulate the concentration of the glycolytic byproduct fructose-2,6-bisphosphate (F2,6BP). The encoded protein is highly expressed in cancer cells and is induced by hypoxia. This protein is essential to the survival of cancer cells under conditions of hypoxia, because it increases the amount of F2,6BP and ATP at a time when the cell cannot produce much of them. This finding suggests that this protein may be a good target for disruption in cancer cells, hopefully imperiling their survival. Several transcript variants encoding different isoforms have been found for this gene.

抗原: Synthetic peptide of human PFKFB4

经过测试的应用: ELISA, WB, IHC

推荐稀释比: IHC: 25-100; WB: 200-1000; ELISA: 2000-5000

种属反应性: Rabbit

克隆性: Rabbit Polyclonal

亚型: Immunogen-specific rabbit IgG

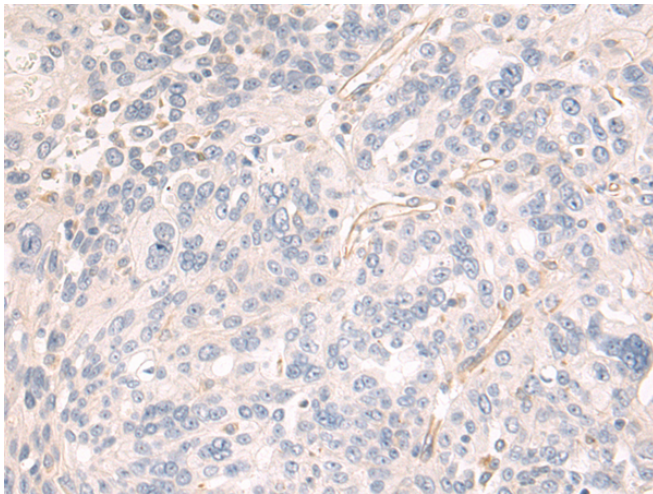
纯化: Antigen affinity purification

种属反应性: Human, Mouse, Rat

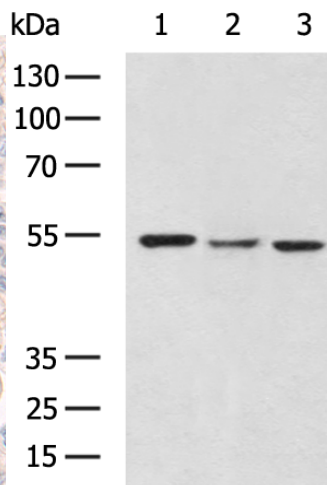
成分: PBS (without Mg²⁺ and Ca²⁺), pH 7.4, 150 mM NaCl, 0.05% Sodium Azide and 40% glycerol

研究领域: Metabolism, Cancer

储存和运输: Store at -20°C. Avoid repeated freezing and thawing



Immunohistochemistry analysis of paraffin-embedded Human breast cancer tissue using 214142(PFKFB4 Antibody) at a dilution of 1/35(Cytoplasm).



Gel: 8%SDS-PAGE, Lysate: 40 µg;
Lane 1-3: Raji, 231, 293T cell lysates;
Primary antibody: 214142(PFKFB4 Antibody) at dilution 1/200;
Secondary antibody: HRP-conjugated Goat anti rabbit IgG at 1/5000 dilution;
Exposure time: 1 minute