

PELP1 RABBIT MAB

货号: N263483

产品全名: PELP1 兔单克隆抗体

基因符号 HMX3; MNAR; P160; PELP1; PELP1 proline glutamic acid leucine rich protein 1; PELP1 proline- glutamic

UNIPROT ID: Q8IZL8

背景: This gene encodes a transcription factor which coactivates transcription of estrogen receptor responsive genes and corepresses genes activated by other hormone receptors or sequence-specific transcription factors. Expression of this gene is regulated by both members of the estrogen receptor family. This gene may be involved in the progression of several types of cancer. Alternative splicing results in multiple transcript variants.

抗原: A synthetic peptide of human PELP1

经过测试的应用: WB,IHC-F,IHC-P,ICC/IF

推荐稀释比: WB: 1/500-1/1000 IHC: 1/50-1/100 IF: 1/50-1/200

种属反应性: Rabbit

克隆性: Rabbit Monoclonal

克隆编号: R03-8F7

分子量: Calculated MW: 120 kDa; Observed MW: 160 kDa

亚型: IgG

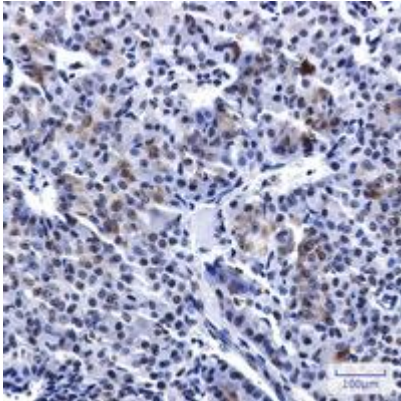
纯化: Affinity Purified

种属反应性: Human

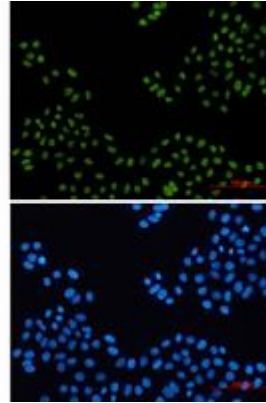
成分: PBS (without Mg²⁺ and Ca²⁺), pH 7.3 containing 50% glycerol, 0.5% BSA and 0.02% sodium azide

研究领域: Signal Transduction

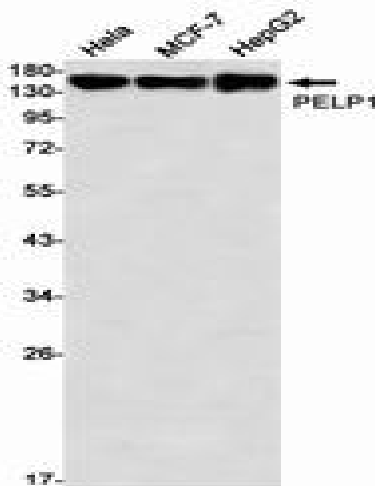
储存和运输: Store at -20°C. Avoid repeated freezing and thawing



Immunohistochemistry analysis of paraffin-embedded Human breast cancer tissue using PELP1 antibody. High-pressure and temperature Sodium Citrate pH 6.0 was used for antigen retrieval.



Immunocytochemistry analysis of PELP1 (green) in HeLa using PELP1 antibody, and DAPI (blue).



Western blot analysis of PELP1 in HeLa, MCF-7, HepG2 lysates using PELP1 antibody.