

## PELP1 RABBIT MAB

货号: N263485

产品全名: PELP1 兔单克隆抗体

基因符号 HMX3; MNAR; P160; PELP1; PELP1 proline glutamic acid leucine rich protein 1; PELP1 proline- glutamic

**UNIPROT ID:** Q8IZL8

**背景:** This gene encodes a transcription factor which coactivates transcription of estrogen receptor responsive genes and corepresses genes activated by other hormone receptors or sequence-specific transcription factors. Expression of this gene is regulated by both members of the estrogen receptor family. This gene may be involved in the progression of several types of cancer. Alternative splicing results in multiple transcript variants.

**抗原:** A synthetic peptide of human PELP1

**经过测试的应用:** WB, ICC/IF

**推荐稀释比:** WB: 1/500-1/1000 IF: 1/50-1/200

**种属反应性:** Rabbit

**克隆性:** Rabbit Monoclonal

**克隆编号:** R01-5H1

**分子量:** Calculated MW: 120 kDa; Observed MW: 160 kDa

**亚型:** IgG

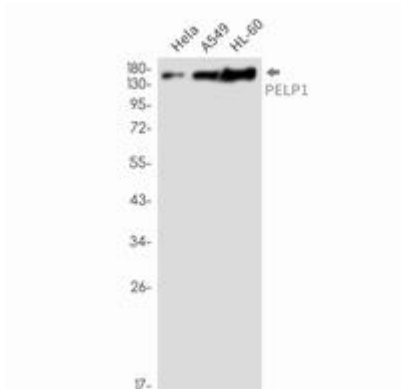
**纯化:** Affinity Purified

**种属反应性:** Human

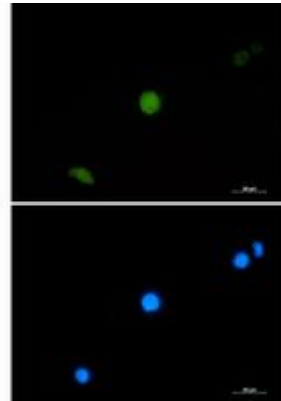
**成分:** PBS (without Mg<sup>2+</sup> and Ca<sup>2+</sup>), pH 7.3 containing 50% glycerol, 0.5% BSA and 0.02% sodium azide

**研究领域:** Signal Transduction

**储存和运输:** Store at -20°C. Avoid repeated freezing and thawing



Western blot analysis of PELP1 in HeLa, A549, HL-60 lysates using PELP1 antibody.



Immunocytochemistry analysis of PELP1 (green) in CEM using PELP1 antibody, and DAPI (blue).