

PECAM1 RABBIT PAB

货号: S219966

产品全名: PECAM1 兔多抗

基因符号 CD31; PECAM1; GPIIA; PECAM-1; endoCAM; CD31/EndoCAM

UNIPROT ID: P16284 (Gene Accession - NP_000433)

背景: The protein encoded by this gene is found on the surface of platelets, monocytes, neutrophils, and some types of T-cells, and makes up a large portion of endothelial cell intercellular junctions. The encoded protein is a member of the immunoglobulin superfamily and is likely involved in leukocyte migration, angiogenesis, and integrin activation.

抗原: Synthetic peptide of human PECAM1

经过测试的应用: ELISA, WB, IHC

推荐稀释比: IHC: 50-200;WB: 500-2000;ELISA: 5000-10000

种属反应性: Rabbit

克隆性: Rabbit Polyclonal

亚型: Immunogen-specific rabbit IgG

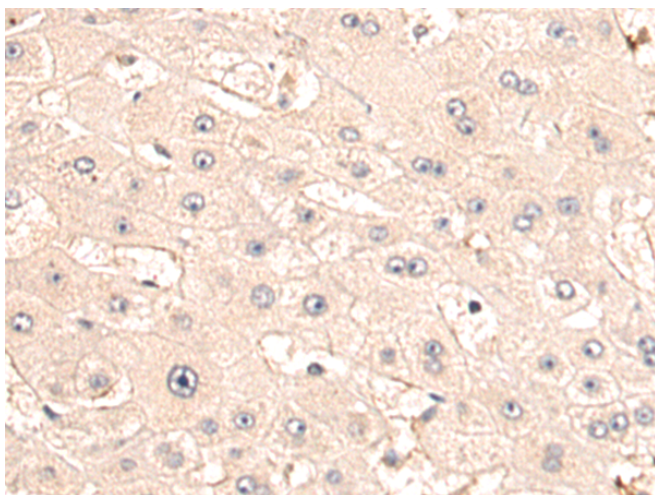
纯化: Antigen affinity purification

种属反应性: Human, Mouse

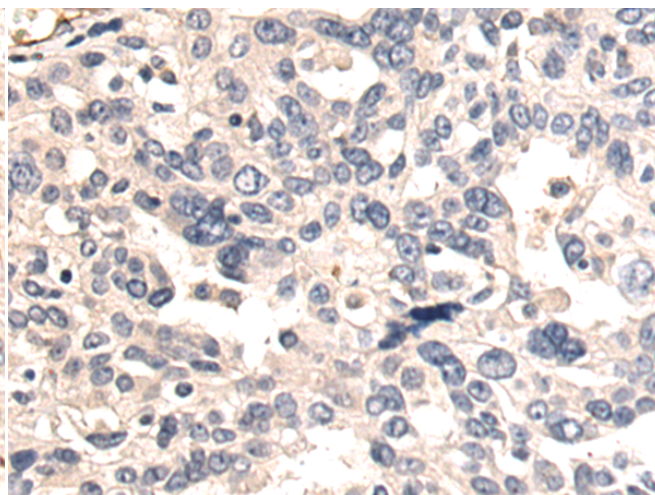
成分: PBS (without Mg²⁺ and Ca²⁺), pH 7.4, 150 mM NaCl, 0.05% Sodium Azide and 40% glycerol

研究领域: Signal Transduction, Cancer, Cardiovascular, Stem Cells

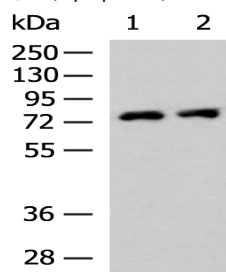
储存和运输: Store at -20°C. Avoid repeated freezing and thawing



Immunohistochemistry analysis of paraffin-embedded Human liver cancer tissue using 219966(PECAM1 Antibody) at a dilution of 1/50(Cytoplasm).



Immunohistochemistry analysis of paraffin-embedded Human breast cancer tissue using 219966(Anti-PECAM1 Antibody) at a dilution of 1/50.



Gel: 8%SDS-PAGE, Lysate: 40 µg;

Lane 1-2: K562 and HepG2 cell lysates;

Primary antibody: 219966(PECAM1 Antibody) at dilution 1/500;

Secondary antibody: HRP-conjugated Goat anti rabbit IgG at 1/5000 dilution;

Exposure time: 40 seconds