

PDHB RABBIT PAB

货号: S217678

产品全名: PDHB 兔多抗

基因符号 PDHBD; PHE1B; PDHE1B; PDHE1-B

UNIPROT ID: P11177 (Gene Accession - BC000439)

背景: The pyruvate dehydrogenase (PDH) complex is a nuclear-encoded mitochondrial multienzyme complex that catalyzes the overall conversion of pyruvate to acetyl-CoA and carbon dioxide, and provides the primary link between glycolysis and the tricarboxylic acid (TCA) cycle. The PDH complex is composed of multiple copies of three enzymatic components: pyruvate dehydrogenase (E1), dihydrolipoamide acetyltransferase (E2) and lipoamide dehydrogenase (E3). The E1 enzyme is a heterotetramer of two alpha and two beta subunits. This gene encodes the E1 beta subunit. Mutations in this gene are associated with pyruvate dehydrogenase E1-beta deficiency. Alternatively spliced transcript variants have been found for this gene. [provided by RefSeq, Mar 2012]

抗原: Fusion protein of human PDHB

经过测试的应用: ELISA, WB, IHC

推荐稀释比: IHC: 100-300;WB: 1000-5000;ELISA: 5000-10000

种属反应性: Rabbit

克隆性: Rabbit Polyclonal

亚型: Immunogen-specific rabbit IgG

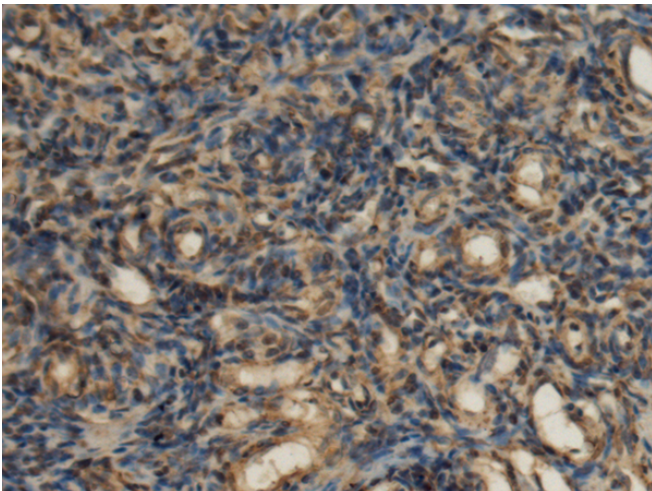
纯化: Antigen affinity purification

种属反应性: Human, Mouse, Rat

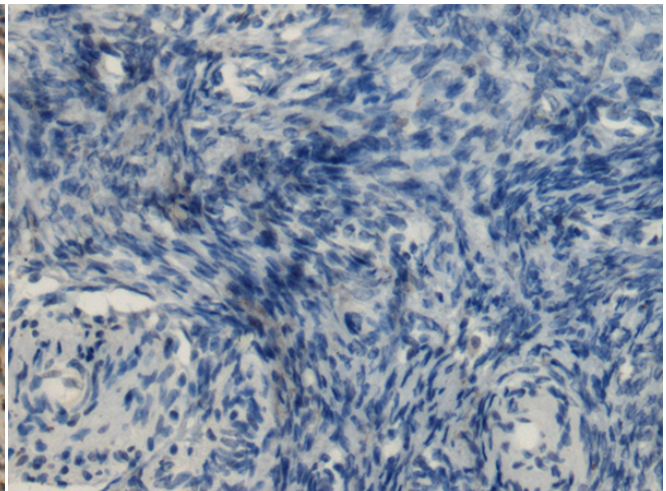
成分: PBS (without Mg²⁺ and Ca²⁺), pH 7.4, 150 mM NaCl, 0.05% Sodium Azide and 40% glycerol

研究领域: Metabolism, Cancer

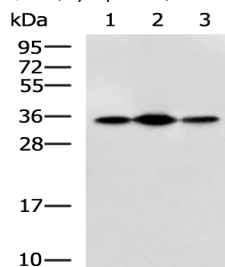
储存和运输: Store at -20°C. Avoid repeated freezing and thawing



Immunohistochemistry analysis of paraffin embedded Human ovarian cancer tissue using 217678 (PDHB Antibody) at a dilution of 1/120 (Cytoplasm).



In comparison with the IHC on the left, the same paraffin-embedded Human ovarian cancer tissue is first treated with the fusion protein and then with 217678 (Anti-PDHB Antibody) at dilution 1/120.



Gel: 12%SDS-PAGE, Lysate: 40 µg;

Lane 1-3: Rat heart tissue, Human heart tissue, HepG2 cell lysates;

Primary antibody: 217678 (PDHB Antibody) at dilution 1/400;

Secondary antibody: HRP-conjugated Goat anti rabbit IgG at 1/5000 dilution;

Exposure time: 10 seconds



Product Description

Pioneering GTPase and Oncogene Product Development since 2010
