

PDGFD RABBIT PAB

货号: S217676

产品全名: PDGFD 兔多抗

基因符号 IEGF; SCDGFB; MSTP036; SCDGF-B

UNIPROT ID: Q9GZP0 (Gene Accession - BC030645)

背景: The protein encoded by this gene is a member of the platelet-derived growth factor family. The four members of this family are mitogenic factors for cells of mesenchymal origin and are characterized by a core motif of eight cysteines, seven of which are found in this factor. This gene product only forms homodimers and, therefore, does not dimerize with the other three family members. It differs from alpha and beta members of this family in having an unusual N-terminal domain, the CUB domain. Two splice variants have been identified for this gene. [provided by RefSeq, Jul 2008]

抗原: Fusion protein of human PDGFD

经过测试的应用: ELISA, IHC

推荐稀释比: IHC: 100-200; ELISA: 5000-10000

种属反应性: Rabbit

克隆性: Rabbit Polyclonal

亚型: Immunogen-specific rabbit IgG

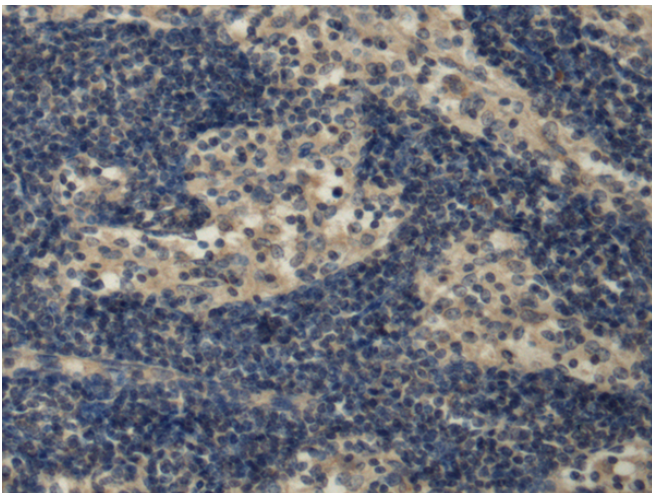
纯化: Antigen affinity purification

种属反应性: Human, Mouse, Rat

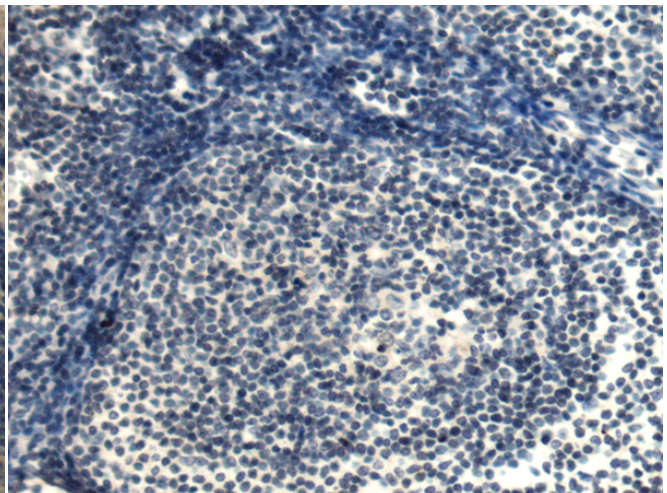
成分: PBS (without Mg²⁺ and Ca²⁺), pH 7.4, 150 mM NaCl, 0.05% Sodium Azide and 40% glycerol

研究领域: Signal Transduction, Cancer, Neuroscience, Cardiovascular

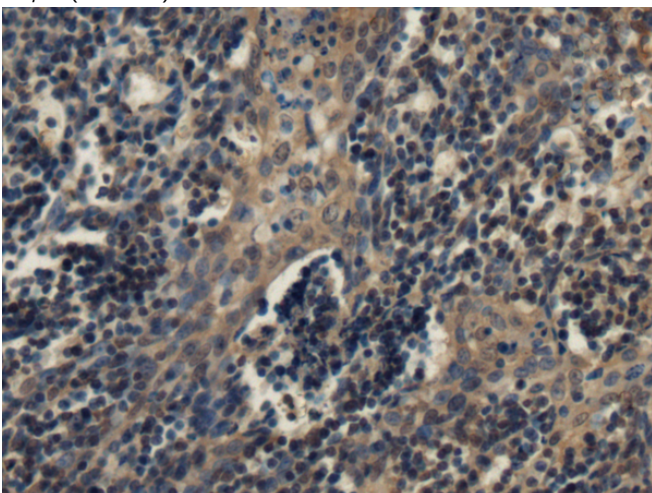
储存和运输: Store at -20°C. Avoid repeated freezing and thawing



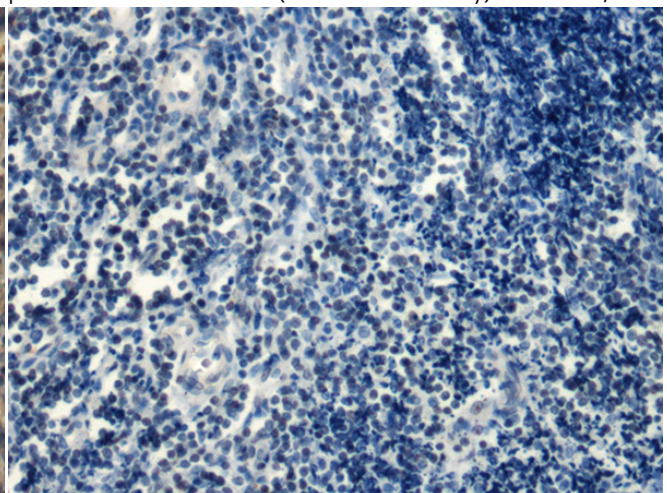
Immunohistochemistry analysis of paraffin embedded Human esophagus cancer tissue using 217676 (PDGFD Antibody) at a dilution of 1/120 (Secreted).



In comparison with the IHC on the left, the same paraffin-embedded Human esophagus cancer tissue is first treated with the fusion protein and then with 217676 (Anti-PDGFD Antibody) at dilution 1/120.



The image on the left is immunohistochemistry of paraffin-embedded Human tonsil tissue using 217676 (Anti-PDGFD Antibody) at a dilution of 1/120.



In comparison with the IHC on the left, the same paraffin-embedded Human tonsil tissue is first treated with fusion protein and then with D222850 (Anti-PDGFD Antibody) at dilution 1/120.



Product Description

Pioneering GTPase and Oncogene Product Development since 2010
