

PDE4DIP RABBIT PAB

货号: S219318

产品全名: PDE4DIP 兔多抗

基因符号 MMGL; CMYA2

UNIPROT ID: Q5VU43 (Gene Accession - BC025406)

背景: The protein encoded by this gene serves to anchor phosphodiesterase 4D to the Golgi/centrosome region of the cell. Defects in this gene may be a cause of myeloproliferative disorder (MPD) associated with eosinophilia. Several transcript variants encoding different isoforms have been found for this gene.

抗原: Fusion protein of human PDE4DIP

经过测试的应用: ELISA, IHC

推荐稀释比: IHC: 50-200; ELISA: 5000-10000

种属反应性: Rabbit

克隆性: Rabbit Polyclonal

亚型: Immunogen-specific rabbit IgG

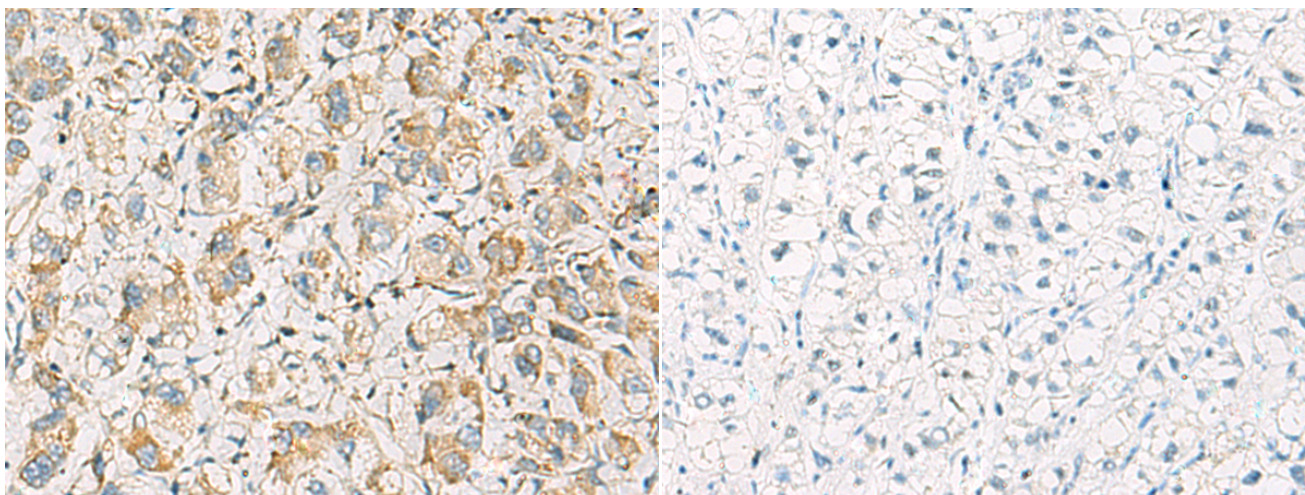
纯化: Antigen affinity purification

种属反应性: Human, Mouse, Rat

成分: PBS (without Mg²⁺ and Ca²⁺), pH 7.4, 150 mM NaCl, 0.05% Sodium Azide and 40% glycerol

研究领域: Signal Transduction, Cardiovascular

储存和运输: Store at -20°C. Avoid repeated freezing and thawing



Immunohistochemistry analysis of paraffin embedded Human liver cancer tissue using 219318(PDE4DIP Antibody) at a dilution of 1/60(Cytoplasm).

In comparison with the IHC on the left, the same paraffin-embedded Human liver cancer tissue is first treated with the fusion protein and then with 219318(Anti-PDE4DIP Antibody) at dilution 1/60.