

## PDCD6IP RABBIT PAB

货号: S220789

产品全名: PDCD6IP 兔多抗

基因符号: AIP1; ALIX; HP95; DRIP4

**UNIPROT ID:** Q8WUM4 (Gene Accession - NP\_001155901)

**背景:** This gene encodes a protein that functions within the ESCRT pathway in the abscission stage of cytokinesis, in intraluminal endosomal vesicle formation, and in enveloped virus budding. Studies using mouse cells have shown that overexpression of this protein can block apoptosis. In addition, the product of this gene binds to the product of the PDCD6 gene, a protein required for apoptosis, in a calcium-dependent manner. This gene product also binds to endophilins, proteins that regulate membrane shape during endocytosis. Overexpression of this gene product and endophilins results in cytoplasmic vacuolization, which may be partly responsible for the protection against cell death. Several alternatively spliced transcript variants encoding different isoforms have been found for this gene. Related pseudogenes have been identified on chromosome 15.

**抗原:** Synthetic peptide of human PDCD6IP

**经过测试的应用:** ELISA, WB, IHC

**推荐稀释比:** IHC: 50-200; WB: 500-2000; ELISA: 5000-10000

**种属反应性:** Rabbit

**克隆性:** Rabbit Polyclonal

**亚型:** Immunogen-specific rabbit IgG

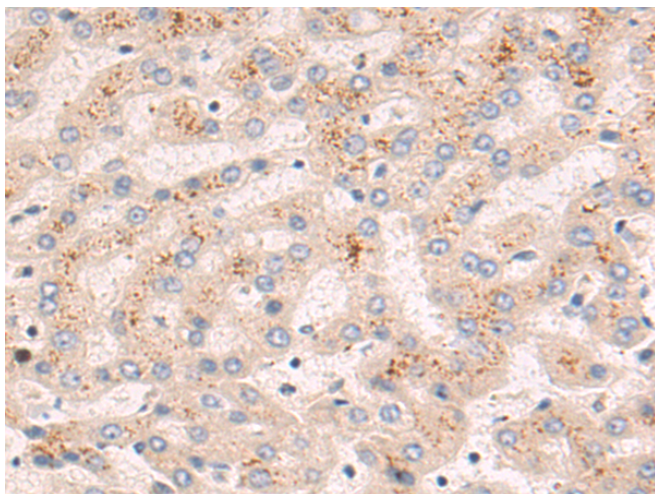
**纯化:** Antigen affinity purification

**种属反应性:** Human, Mouse, Rat

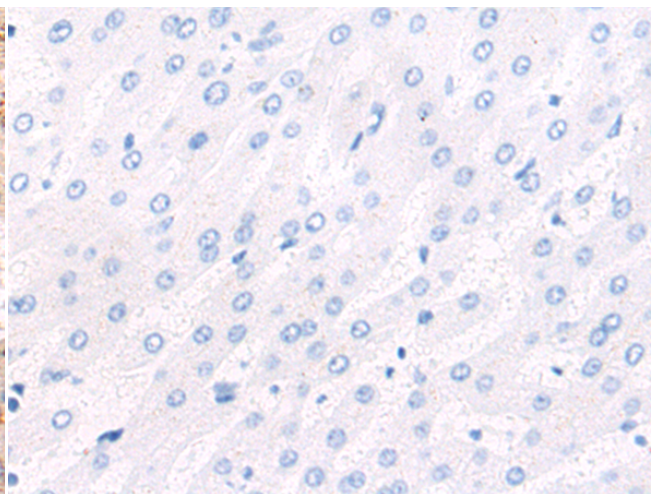
**成分:** PBS (without Mg<sup>2+</sup> and Ca<sup>2+</sup>), pH 7.4, 150 mM NaCl, 0.05% Sodium Azide and 40% glycerol

**研究领域:** Signal Transduction, Cancer

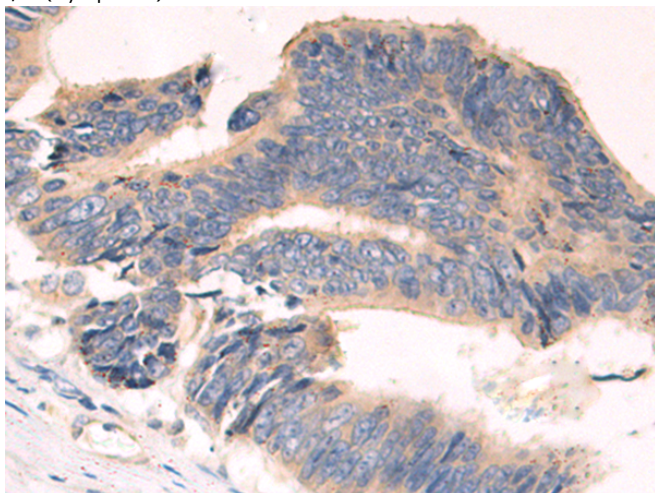
**储存和运输:** Store at -20°C. Avoid repeated freezing and thawing



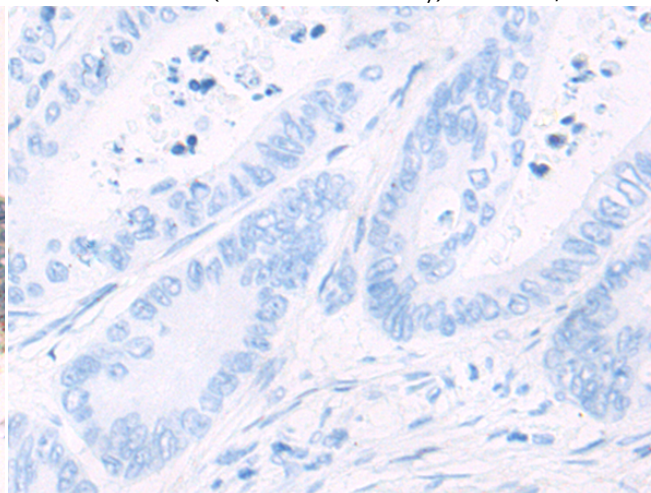
Immunohistochemistry analysis of paraffin embedded Human liver cancer tissue using 220789(PDCD6IP Antibody) at a dilution of 1/50(Cytoplasm).



In comparison with the IHC on the left, the same paraffin-embedded Human liver cancer tissue is first treated with the synthetic peptide and then with 220789(Anti-PDCD6IP Antibody) at dilution 1/50.

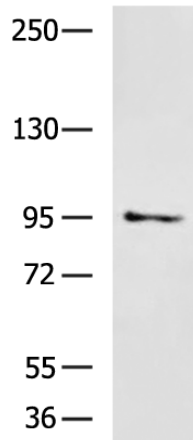


The image on the left is immunohistochemistry of paraffin-embedded Human colorectal cancer tissue using 220789(Anti-PDCD6IP Antibody) at a dilution of 1/50.



In comparison with the IHC on the left, the same paraffin-embedded Human colorectal cancer tissue is first treated with synthetic peptide and then with D262028(Anti-PDCD6IP Antibody) at dilution 1/50.

kDa



Gel: 6%SDS-PAGE, Lysate: 40 µg;  
 Lane: MCF7 cell lysate;  
 Primary antibody: 220789(PDCD6IP Antibody) at dilution 1/400;  
 Secondary antibody: HRP-conjugated Goat anti rabbit IgG at 1/5000 dilution;  
 Exposure time: 30 seconds



# Product Description

Pioneering GTPase and Oncogene Product Development since 2010

---