

## PDCD2 RABBIT PAB

货号: S220168

产品全名: PDCD2 兔多抗

基因符号: RP8, ZMYND7

**UNIPROT ID:** Q16342 (Gene Accession - NP\_002589)

**背景:** This gene encodes a nuclear protein expressed in a variety of tissues. Expression of this gene has been shown to be repressed by B-cell CLL/lymphoma 6 (BCL6), a transcriptional repressor required for lymph node germinal center development, suggesting that BCL6 regulates apoptosis by its effects on this protein. Alternative splicing results in multiple transcript variants and pseudogenes have been identified on chromosomes 9 and 12.

**抗原:** Synthetic peptide of human PDCD2

**经过测试的应用:** ELISA, WB, IHC

**推荐稀释比:** IHC: 25-100;WB: 200-1000;ELISA: 1000-5000

**种属反应性:** Rabbit

**克隆性:** Rabbit Polyclonal

**亚型:** Immunogen-specific rabbit IgG

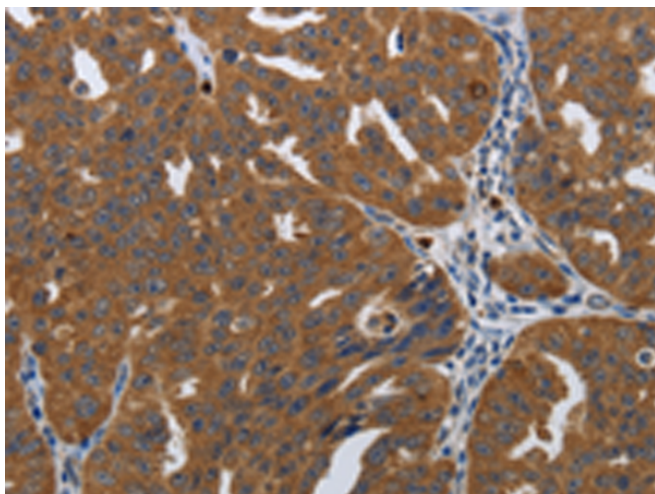
**纯化:** Antigen affinity purification

**种属反应性:** Human, Mouse, Rat

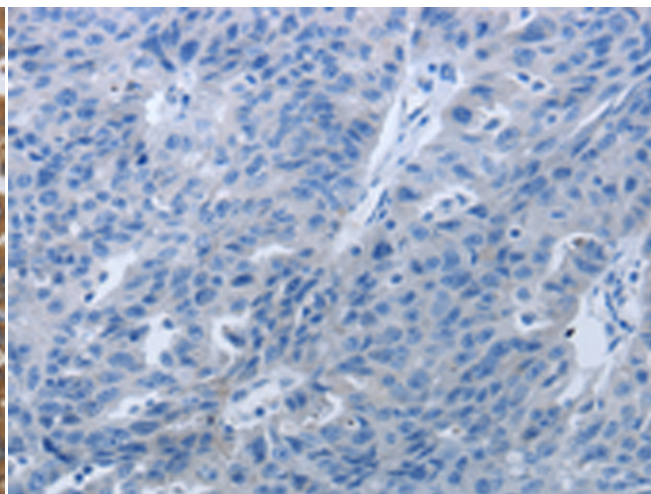
**成分:** PBS (without Mg<sup>2+</sup> and Ca<sup>2+</sup>), pH 7.4, 150 mM NaCl, 0.05% Sodium Azide and 40% glycerol

**研究领域:** Epigenetics and Nuclear Signaling, Cancer

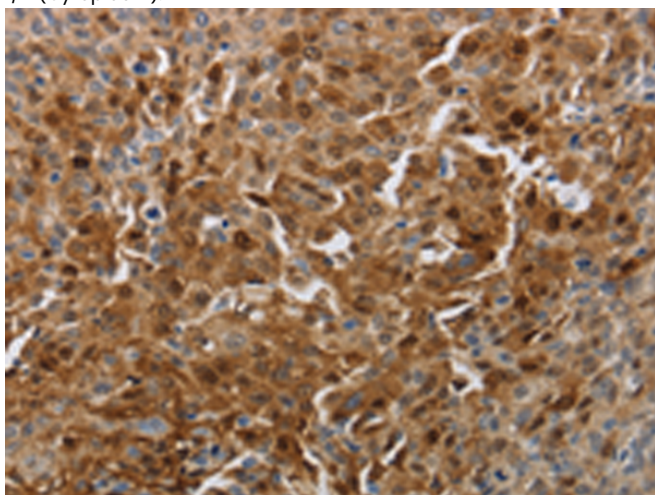
**储存和运输:** Store at -20°C. Avoid repeated freezing and thawing



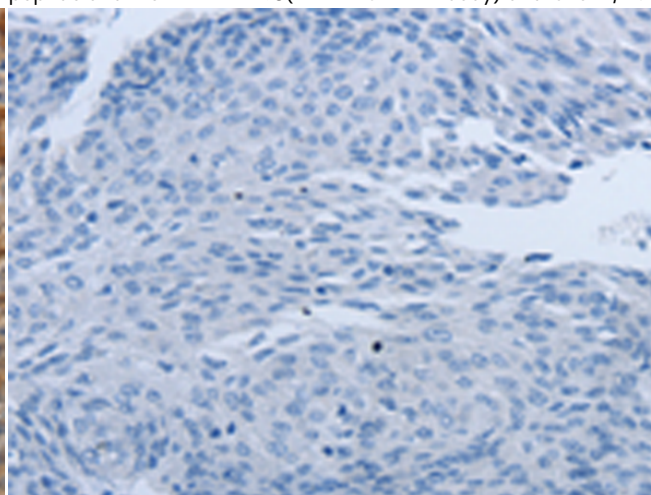
Immunohistochemistry analysis of paraffin embedded Human ovarian cancer tissue using 220168(PDCD2 Antibody) at a dilution of 1/10(Cytoplasm).



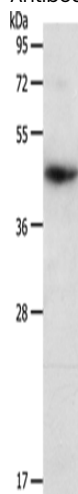
In comparison with the IHC on the left, the same paraffin-embedded Human ovarian cancer tissue is first treated with the synthetic peptide and then with 220168(Anti-PDCD2 Antibody) at dilution 1/10.



The image on the left is immunohistochemistry of paraffin-embedded Human cervical cancer tissue using 220168(Anti-PDCD2 Antibody) at a dilution of 1/10.



In comparison with the IHC on the left, the same paraffin-embedded Human cervical cancer tissue is first treated with synthetic peptide and then with D261075(Anti-PDCD2 Antibody) at dilution 1/10.



Gel: 10%SDS-PAGE, Lysate: 40 µg;  
Lane: HeLa cells;  
Primary antibody: 220168(PDCD2 Antibody) at dilution 1/200;  
Secondary antibody: Goat anti rabbit IgG at 1/8000 dilution;  
Exposure time: 20 seconds



# Product Description

Pioneering GTPase and Oncogene Product Development since 2010

---