

PDCD1 RABBIT PAB

货号: S213932

产品全名: PDCD1 兔多抗

基因符号 PD1; PD-1; CD279; SLEB2; hPD-1; hPD-I; hSLE1

UNIPROT ID: Q15116 (Gene Accession - NP_005009)

背景: Programmed cell death protein 1 (PDCD1) is an immune-inhibitory receptor expressed in activated T cells; it is involved in the regulation of T-cell functions, including those of effector CD8⁺ T cells. In addition, this protein can also promote the differentiation of CD4⁺ T cells into T regulatory cells. PDCD1 is expressed in many types of tumors including melanomas, and has demonstrated to play a role in anti-tumor immunity. Moreover, this protein has been shown to be involved in safeguarding against autoimmunity, however, it can also contribute to the inhibition of effective anti-tumor and anti-microbial immunity.

抗原: Synthetic peptide of human PDCD1

经过测试的应用: ELISA, IHC

推荐稀释比: IHC: 50-100; ELISA: 2000-10000

种属反应性: Rabbit

克隆性: Rabbit Polyclonal

亚型: Immunogen-specific rabbit IgG

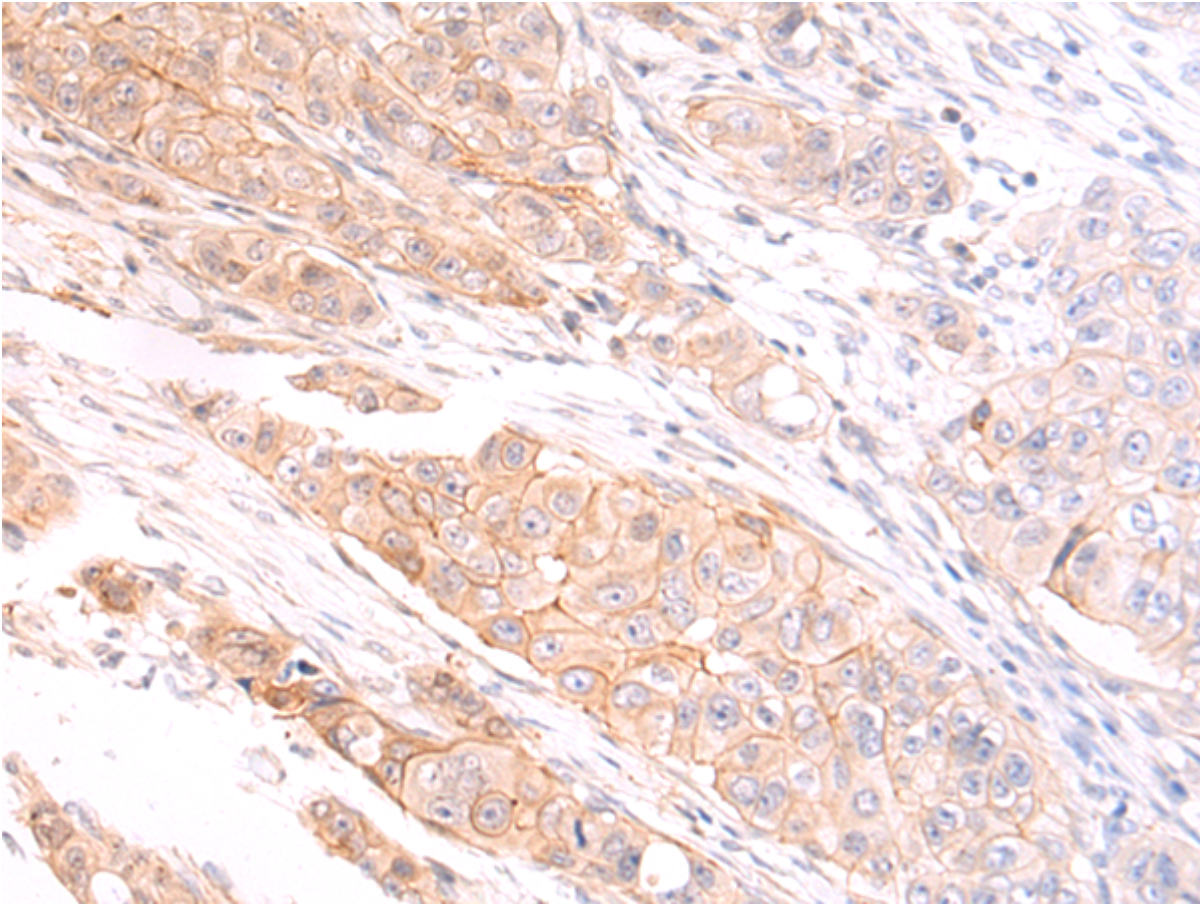
纯化: Antigen affinity purification

种属反应性: Human

成分: PBS (without Mg²⁺ and Ca²⁺), pH 7.4, 150 mM NaCl, 0.05% Sodium Azide and 40% glycerol

研究领域: Cell Biology, Immunology, Cancer

储存和运输: Store at -20°C. Avoid repeated freezing and thawing



Immunohistochemistry analysis of paraffin-embedded Human breast cancer tissue using 213932(PDCD1 Antibody) at a dilution of 1/50(Cell membrane).