

PCYT2 RABBIT PAB

货号: S219100

产品全名: PCYT2 兔多抗

基因符号: ET

UNIPROT ID: Q99447 (Gene Accession - BC000351)

背景: This gene encodes an enzyme that catalyzes the formation of CDP-ethanolamine from CTP and phosphoethanolamine in the Kennedy pathway of phospholipid synthesis. Alternative splicing results in multiple transcript variants.

抗原: Fusion protein of human PCYT2

经过测试的应用: ELISA, WB, IHC

推荐稀释比: IHC: 40-200;WB: 1000-5000;ELISA: 5000-10000

种属反应性: Rabbit

克隆性: Rabbit Polyclonal

亚型: Immunogen-specific rabbit IgG

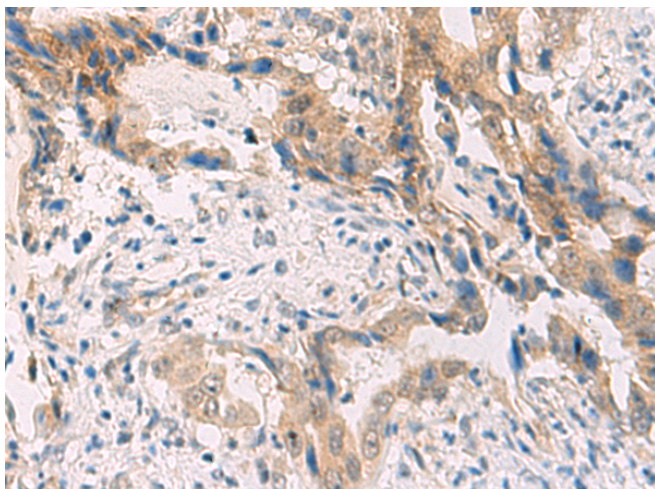
纯化: Antigen affinity purification

种属反应性: Human, Mouse, Rat

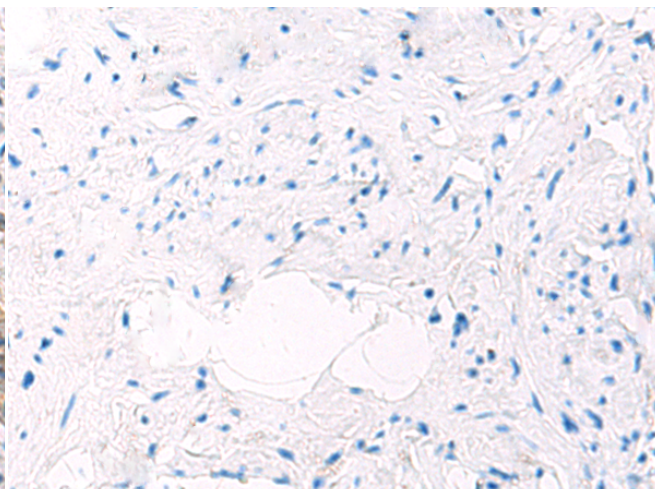
成分: PBS (without Mg²⁺ and Ca²⁺), pH 7.4, 150 mM NaCl, 0.05% Sodium Azide and 40% glycerol

研究领域: Signal Transduction, Metabolism, Neuroscience, Cardiovascular, Immunology

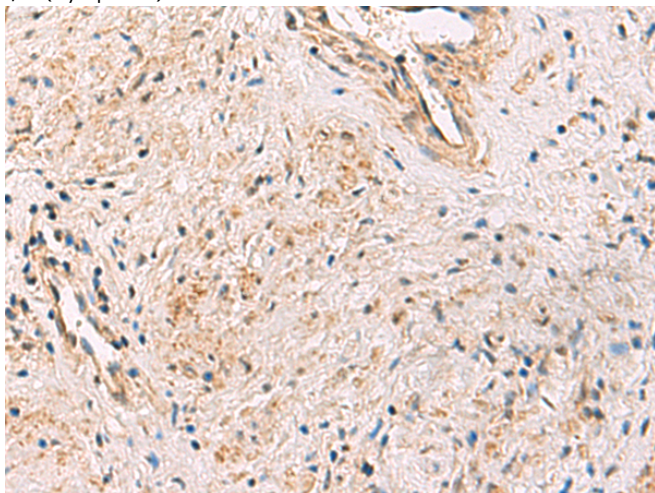
储存和运输: Store at -20°C. Avoid repeated freezing and thawing



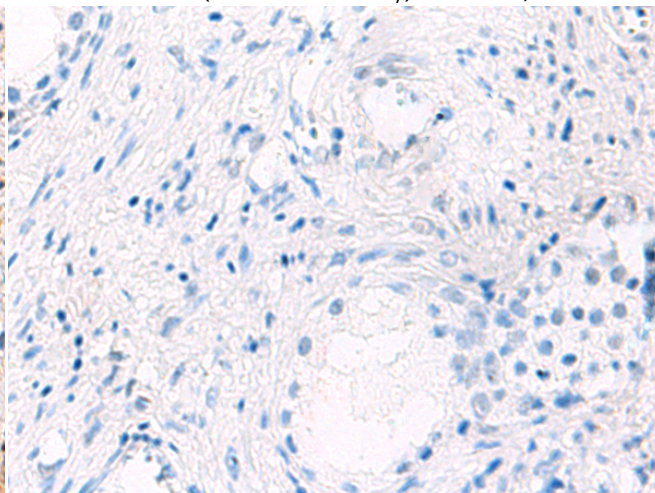
Immunohistochemistry analysis of paraffin embedded Human cervical cancer tissue using 219100(PCYT2 Antibody) at a dilution of 1/55(Cytoplasm).



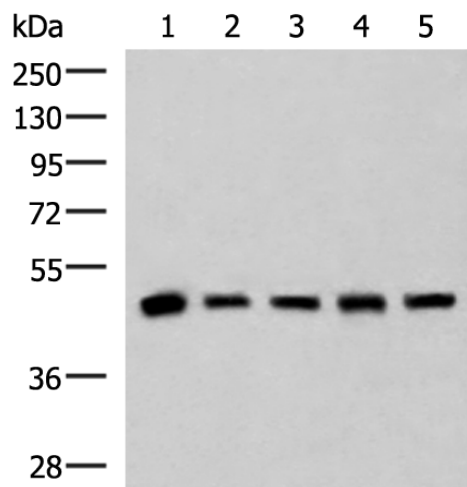
In comparison with the IHC on the left, the same paraffin-embedded Human cervical cancer tissue is first treated with the fusion protein and then with 219100(Anti-PCYT2 Antibody) at dilution 1/55.



The image on the left is immunohistochemistry of paraffin-embedded Human prostate cancer tissue using 219100(Anti-PCYT2 Antibody) at a dilution of 1/55.



In comparison with the IHC on the left, the same paraffin-embedded Human prostate cancer tissue is first treated with fusion protein and then with D225832(Anti-PCYT2 Antibody) at dilution 1/55.



Gel: 8%SDS-PAGE, Lysate: 40 µg;
 Lane 1-5: Human fetal liver tissue, HepG2, A172, Hela and Jurkat cell lysates;
 Primary antibody: 219100(PCYT2 Antibody) at dilution 1/800;
 Secondary antibody: HRP-conjugated Goat anti rabbit IgG at 1/5000 dilution;
 Exposure time: 5 seconds



Product Description

Pioneering GTPase and Oncogene Product Development since 2010
