

PCBD1 RABBIT PAB

货号: S219182

产品全名: PCBD1 兔多抗

基因符号: PCD; PHS; DCOH; PCBD

UNIPROT ID: P61457 (Gene Accession - BC006324)

背景: This gene encodes a member of the pterin-4- α -carbinolamine dehydratase family. The encoded protein has been identified as a moonlighting protein based on its ability to perform mechanistically distinct functions. The encoded protein functions as both a dehydratase involved in tetrahydrobiopterin biosynthesis, and as a cofactor for HNF1A-dependent transcription. A deficiency of this enzyme leads to hyperphenylalaninemia. Alternative splicing results in multiple transcript variants.

抗原: Fusion protein of human PCBD1

经过测试的应用: ELISA, WB, IHC

推荐稀释比: IHC: 50-300; WB: 500-2000; ELISA: 5000-10000

种属反应性: Rabbit

克隆性: Rabbit Polyclonal

亚型: Immunogen-specific rabbit IgG

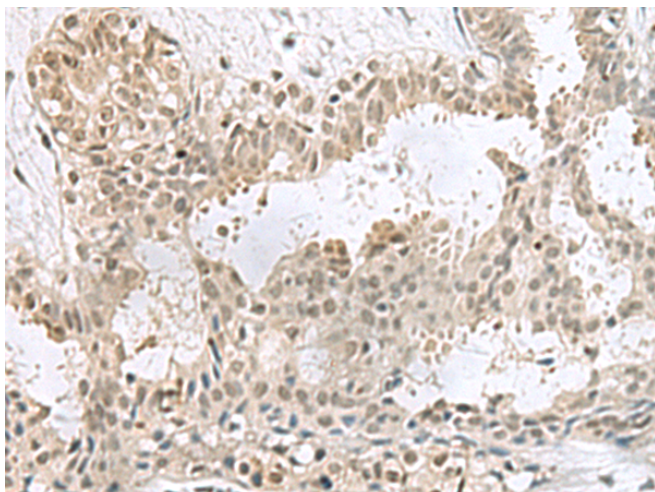
纯化: Antigen affinity purification

种属反应性: Human, Mouse, Rat

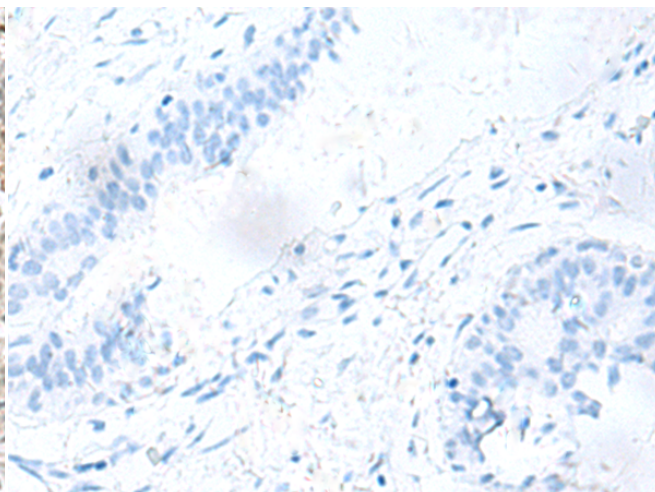
成分: PBS (without Mg²⁺ and Ca²⁺), pH 7.4, 150 mM NaCl, 0.05% Sodium Azide and 40% glycerol

研究领域: Metabolism, Epigenetics and Nuclear Signaling

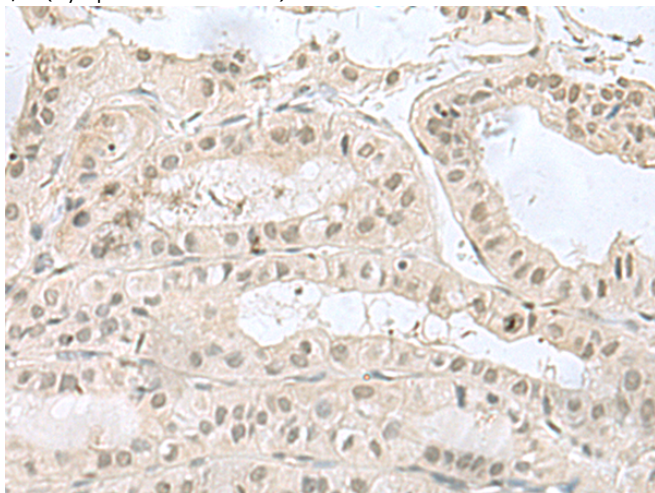
储存和运输: Store at -20°C. Avoid repeated freezing and thawing



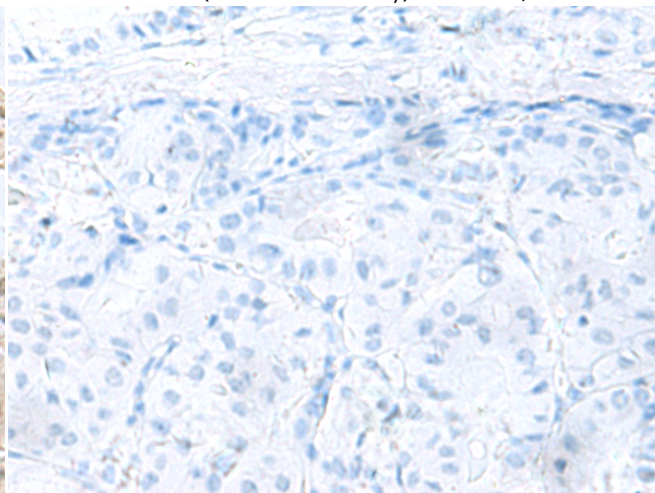
Immunohistochemistry analysis of paraffin embedded Human breast cancer tissue using 219182(PCBD1 Antibody) at a dilution of 1/60(Cytoplasm and Nucleus).



In comparison with the IHC on the left, the same paraffin-embedded Human breast cancer tissue is first treated with the fusion protein and then with 219182(Anti-PCBD1 Antibody) at dilution 1/60.



The image on the left is immunohistochemistry of paraffin-embedded Human thyroid cancer tissue using 219182(Anti-PCBD1 Antibody) at a dilution of 1/60.



In comparison with the IHC on the left, the same paraffin-embedded Human thyroid cancer tissue is first treated with fusion protein and then with D226009(Anti-PCBD1 Antibody) at dilution 1/60.

kDa

72 —
55 —
36 —
28 —
17 —
10 —



Gel: 12%SDS-PAGE, Lysate: 40 µg;
Lane: Mouse kidney tissue lysate;
Primary antibody: 219182(PCBD1 Antibody) at dilution 1/800;
Secondary antibody: HRP-conjugated Goat anti rabbit IgG at 1/5000 dilution;
Exposure time: 1 minute



Product Description

Pioneering GTPase and Oncogene Product Development since 2010
