

PBOV1 RABBIT PAB

货号: S220784

产品全名: PBOV1 兔多抗

基因符号 UC28; UROC28; dJ171N11.2

UNIPROT ID: Q9GZY1 (Gene Accession - NP_067648)

背景: UROC28, also known as PBOV1 (prostate and breast cancer overexpressed 1) or UC28, is a 135 amino acid cytoplasmic and nuclear protein that is expressed in colon, prostate, small intestine, testis and spleen, with lower expression in thymus, ovary and peripheral blood leukocytes. UROC28 is up-regulated in prostate, breast and bladder cancer, and is thereby considered a useful target for diagnosis and treatment of these cancers. UROC28 is encoded by a gene located on human chromosome 6, which contains 170 million base pairs and comprises nearly 6% of the human genome. Deletion of a portion of the q arm of chromosome 6 is associated with early onset intestinal cancer, suggesting the presence of a cancer susceptibility locus. Additionally, Porphyria cutanea tarda, Parkinson's disease, Stickler syndrome and a susceptibility to bipolar disorder are all associated with genes that map to chromosome 6.

抗原: Synthetic peptide of human PBOV1

经过测试的应用: ELISA, WB, IHC

推荐稀释比: IHC: Oct-50;WB: 200-1000;ELISA: 5000-10000

种属反应性: Rabbit

克隆性: Rabbit Polyclonal

亚型: Immunogen-specific rabbit IgG

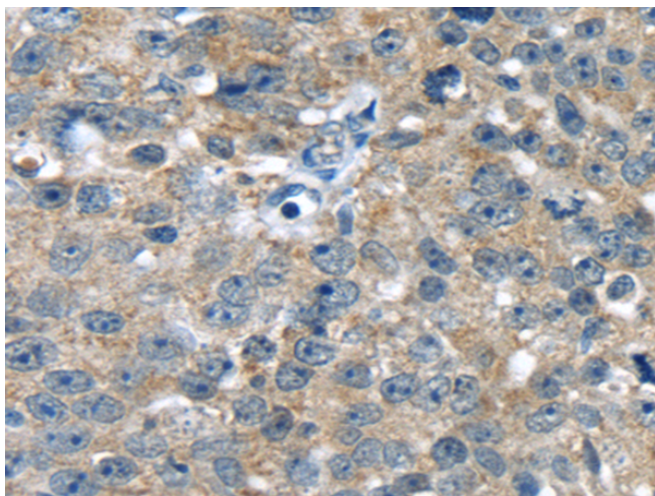
纯化: Antigen affinity purification

种属反应性: Human

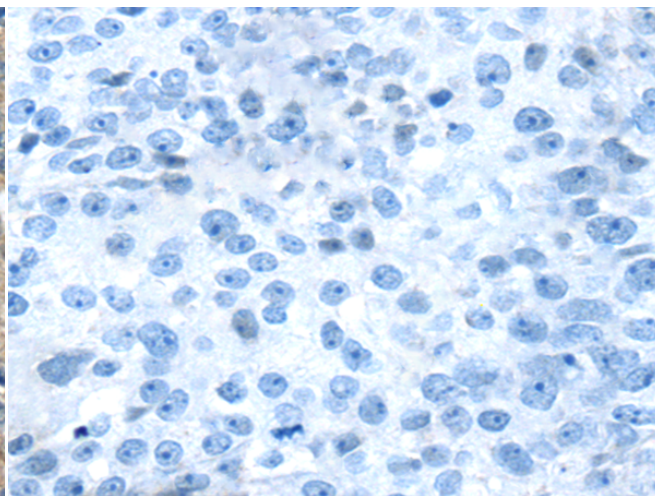
成分: PBS (without Mg²⁺ and Ca²⁺), pH 7.4, 150 mM NaCl, 0.05% Sodium Azide and 40% glycerol

研究领域: Epigenetics and Nuclear Signaling, Cancer

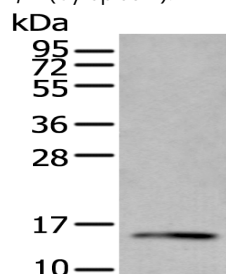
储存和运输: Store at -20°C. Avoid repeated freezing and thawing



Immunohistochemistry analysis of paraffin embedded Human breast cancer tissue using 220784(PBOV1 Antibody) at a dilution of 1/20(Cytoplasm).



In comparison with the IHC on the left, the same paraffin-embedded Human breast cancer tissue is first treated with the synthetic peptide and then with 220784(Anti-PBOV1 Antibody) at dilution 1/20.



Gel: 12%SDS-PAGE, Lysate: 40 µg;

Lane: Human fetal intestines tissue lysate;

Primary antibody: 220784(PBOV1 Antibody) at dilution 1/300;

Secondary antibody: Goat anti rabbit IgG at 1/8000 dilution;

Exposure time: 1 minute



Product Description

Pioneering GTPase and Oncogene Product Development since 2010
