

## PAXILLIN RABBIT MAB

货号: N263481

产品全名: Paxillin 兔单克隆抗体

基因符号 PXN; Paxillin

**UNIPROT ID:** P49023

**背景:** Cytoskeletal protein involved in actin-membrane attachment at sites of cell adhesion to the extracellular matrix (focal adhesion). PXN is a multi-domain cytoskeletal protein that localizes primarily to focal adhesion sites to the extracellular matrix. Phosphorylated by focal adhesion kinase (FAK) and is a component of integrin signaling. Its phosphorylation provides docking sites for recruitment of signaling molecules to focal adhesions.

**抗原:** A synthetic peptide of human Paxillin

**经过测试的应用:** WB,IHC-P,IP

**推荐稀释比:** WB: 1/500-1/1000 IHC: 1/50-1/100 IP: 1/20

**种属反应性:** Rabbit

**克隆性:** Rabbit Monoclonal

**克隆编号:** R07-1B4

**分子量:** Calculated MW: 65 kDa; Observed MW: 65 kDa

**亚型:** IgG

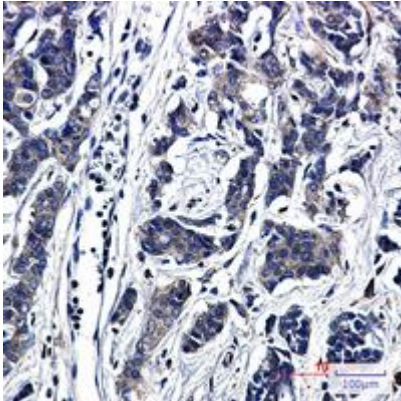
**纯化:** Affinity Purified

**种属反应性:** Human,Rat,Hamster

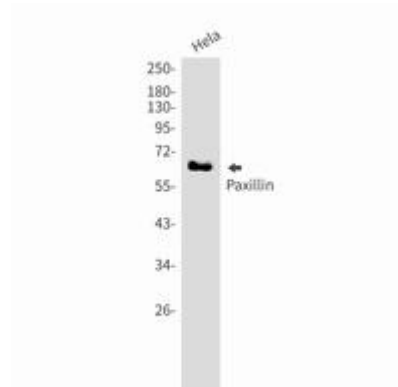
**成分:** PBS (without Mg<sup>2+</sup> and Ca<sup>2+</sup>), pH 7.3 containing 50% glycerol, 0.5% BSA and 0.02% sodium azide

**研究领域:** Signal Transduction

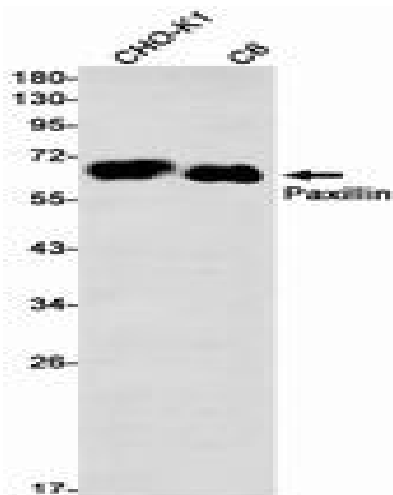
**储存和运输:** Store at -20°C. Avoid repeated freezing and thawing



Immunohistochemistry analysis of paraffin-embedded Human breast cancer using Paxillin antibody. High-pressure and temperature Sodium Citrate pH 6.0 was used for antigen retrieval.



Western blot analysis of Paxillin in HeLa lysates using Paxillin antibody.



Western blot analysis of Paxillin in CHO-K1, C6 lysates using Paxillin antibody.