

PAX8 RABBIT PAB

货号: S210520

产品全名: PAX8 兔多抗

基因符号

UNIPROT ID: Q06710 (Gene Accession - BC001060)

背景: This gene encodes a member of the paired box (PAX) family of transcription factors. Members of this gene family typically encode proteins that contain a paired box domain, an octapeptide, and a paired-type homeodomain. This nuclear protein is involved in thyroid follicular cell development and expression of thyroid-specific genes. Mutations in this gene have been associated with thyroid dysgenesis, thyroid follicular carcinomas and atypical follicular thyroid adenomas. Alternatively spliced transcript variants encoding different isoforms have been described.

抗原: Fusion protein of human PAX8

经过测试的应用: ELISA, WB, IHC

推荐稀释比: IHC: 15-50;WB: 200-1000;ELISA: 1000-2000

种属反应性: Rabbit

克隆性: Rabbit Polyclonal

亚型: Immunogen-specific rabbit IgG

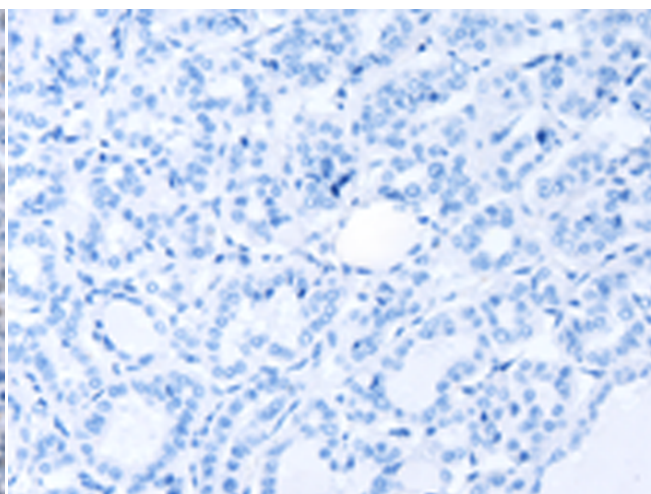
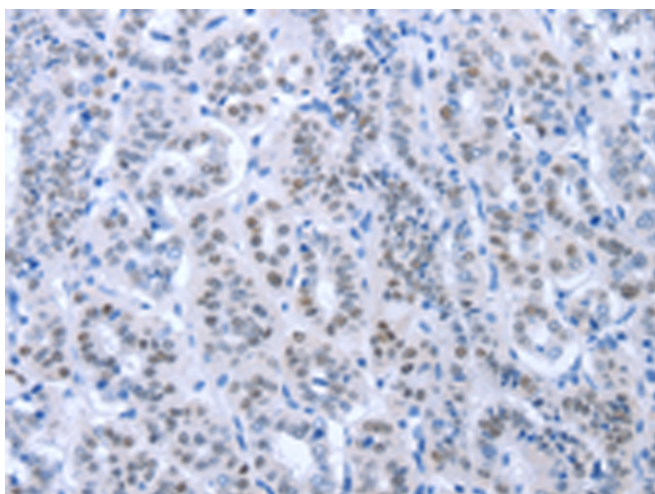
纯化: Antigen affinity purification

种属反应性: Human, Mouse, Rat

成分: PBS (without Mg²⁺ and Ca²⁺), pH 7.4, 150 mM NaCl, 0.05% Sodium Azide and 40% glycerol

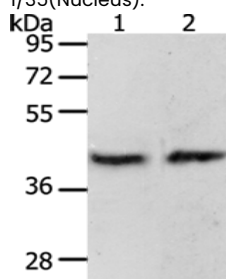
研究领域: Epigenetics and Nuclear Signaling, Neuroscience

储存和运输: Store at -20°C. Avoid repeated freezing and thawing



Immunohistochemistry analysis of paraffin embedded Human thyroid cancer tissue using 210520 (PAX8 Antibody) at a dilution of 1/35 (Nucleus).

In comparison with the IHC on the left, the same paraffin-embedded Human thyroid cancer tissue is first treated with the fusion protein and then with 210520 (Anti-PAX8 Antibody) at dilution 1/35.



Gel: 10% SDS-PAGE, Lysate: 40 µg;

Lane 1-2: MCF7 cells, mouse brain tissue;

Primary antibody: 210520 (PAX8 Antibody) at dilution 1/250;

Secondary antibody: Goat anti rabbit IgG at 1/8000 dilution;

Exposure time: 2 minutes