

PATJ RABBIT PAB

货号: S215763

产品全名: PATJ 兔多抗

基因符号 Cipp; INADL; hINADL; InaD-like

UNIPROT ID: Q8NI35 (Gene Accession - NP_795352)

背景: This gene encodes a protein with multiple PDZ domains. PDZ domains mediate protein-protein interactions, and proteins with multiple PDZ domains often organize multimeric complexes at the plasma membrane. This protein localizes to tight junctions and to the apical membrane of epithelial cells. A similar protein in *Drosophila* is a scaffolding protein which tethers several members of a multimeric signaling complex in photoreceptors.

抗原: Synthetic peptide of human PATJ

经过测试的应用: ELISA, IHC

推荐稀释比: IHC: 40-200; ELISA: 5000-10000

种属反应性: Rabbit

克隆性: Rabbit Polyclonal

亚型: Immunogen-specific rabbit IgG

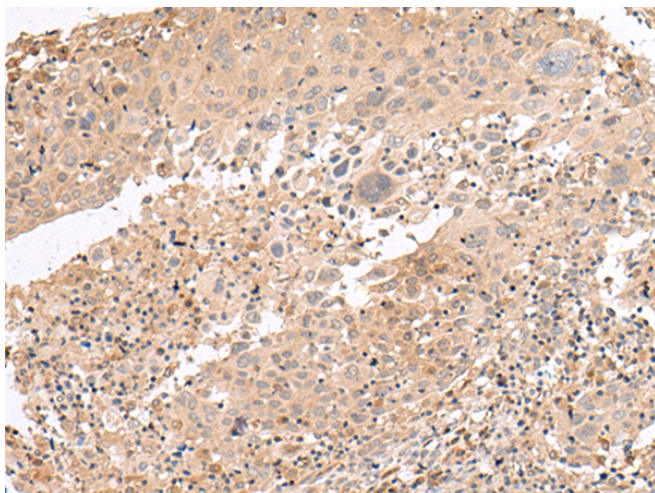
纯化: Antigen affinity purification

种属反应性: Human

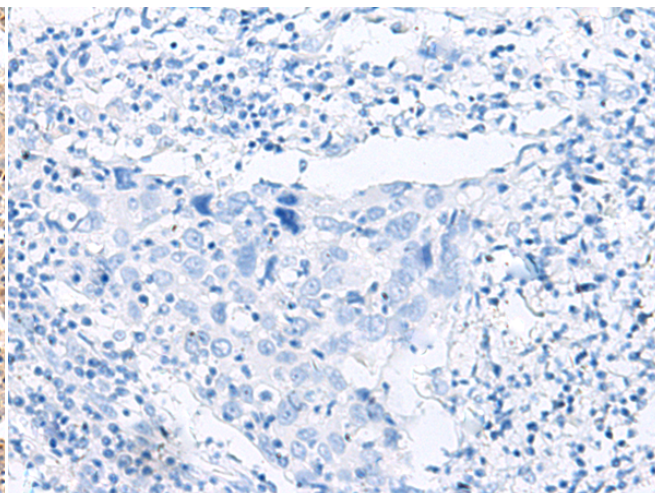
成分: PBS (without Mg²⁺ and Ca²⁺), pH 7.4, 150 mM NaCl, 0.05% Sodium Azide and 40% glycerol

研究领域: Signal Transduction, Neuroscience

储存和运输: Store at -20°C. Avoid repeated freezing and thawing



Immunohistochemistry analysis of paraffin embedded Human cervical cancer tissue using 215763(PATJ Antibody) at a dilution of 1/45(Cytoplasm and Cell membrane).



In comparison with the IHC on the left, the same paraffin-embedded Human cervical cancer tissue is first treated with the synthetic peptide and then with 215763(Anti-PATJ Antibody) at dilution 1/45.