

PARP1 RABBIT PAB

货号: S220165

产品全名: PARP1 兔多抗

基因符号: PARP; PARS; PPOL; ADPRT; ARTD1; ADPRT1; PARP-1; ADPRT 1; pADPRT-1; Poly-PARP

UNIPROT ID: P09874 (Gene Accession - NP_001609.2)

背景: This gene encodes a chromatin-associated enzyme, poly(ADP-ribsyl)transferase, which modifies various nuclear proteins by poly(ADP-ribsyl)ation. The modification is dependent on DNA and is involved in the regulation of various important cellular processes such as differentiation, proliferation, and tumor transformation and also in the regulation of the molecular events involved in the recovery of cell from DNA damage. In addition, this enzyme may be the site of mutation in Fanconi anemia, and may participate in the pathophysiology of type I diabetes.

抗原: Synthetic peptide of human PARP1

经过测试的应用: ELISA, WB, IHC

推荐稀释比: IHC: 50-200;WB: 500-2000;ELISA: 2000-5000

种属反应性: Rabbit

克隆性: Rabbit Polyclonal

亚型: Immunogen-specific rabbit IgG

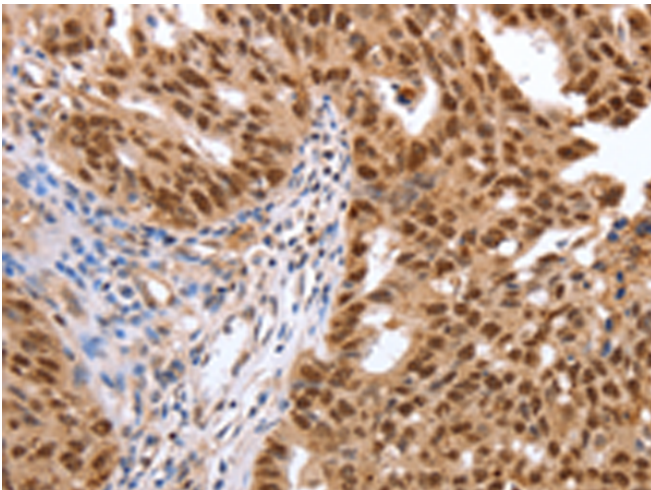
纯化: Antigen affinity purification

种属反应性: Human, Mouse, Rat

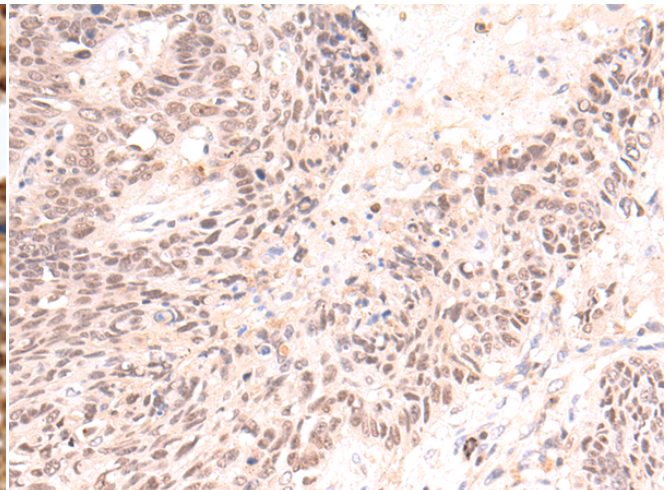
成分: PBS (without Mg²⁺ and Ca²⁺), pH 7.4, 150 mM NaCl, 0.05% Sodium Azide and 40% glycerol

研究领域: Epigenetics and Nuclear Signaling, Cancer

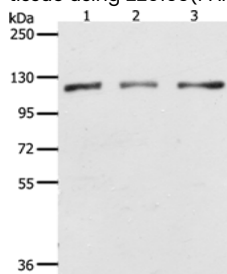
储存和运输: Store at -20°C. Avoid repeated freezing and thawing



Immunohistochemistry analysis of paraffin-embedded Human tonsil tissue using 220165 (PARP1 Antibody) at a dilution of 1/40 (Nucleus).



Immunohistochemistry analysis of paraffin-embedded Human lung cancer tissue using 220165 (Anti-PARP1 Antibody) at a dilution of 1/40.



Gel: 8%SDS-PAGE, Lysate: 40 µg;
Lane 1-3: HeLa, K562 and Jurkat cell lysates;
Primary antibody: 220165 (PARP1 Antibody) at dilution 1/350;
Secondary antibody: Goat anti rabbit IgG at 1/8000 dilution;
Exposure time: 1 second