

## PARP1 (CLEAVED) RABBIT PAB

货号: S213928

产品全名: PARP1 (cleaved) 兔多抗

基因符号 PARP; PARS; PPOL; ADPRT; ARTD1; ADPRT1; PARP-1; ADPRT 1; pADPRT-1; Poly-PARP

**UNIPROT ID:** P09874 (Gene Accession - NP\_001609)

**背景:** This gene encodes a chromatin-associated enzyme, poly(ADP-ribose)transferase, which modifies various nuclear proteins by poly(ADP-ribose)ation. The modification is dependent on DNA and is involved in the regulation of various important cellular processes such as differentiation, proliferation, and tumor transformation and also in the regulation of the molecular events involved in the recovery of cell from DNA damage. In addition, this enzyme may be the site of mutation in Fanconi anemia, and may participate in the pathophysiology of type I diabetes.

**抗原:** Synthetic peptide of human PARP1

**经过测试的应用:** ELISA, WB, IHC

**推荐稀释比:** IHC: 25-100;WB: 500-2000;ELISA: 1000-5000

**种属反应性:** Rabbit

**克隆性:** Rabbit Polyclonal

**亚型:** Immunogen-specific rabbit IgG

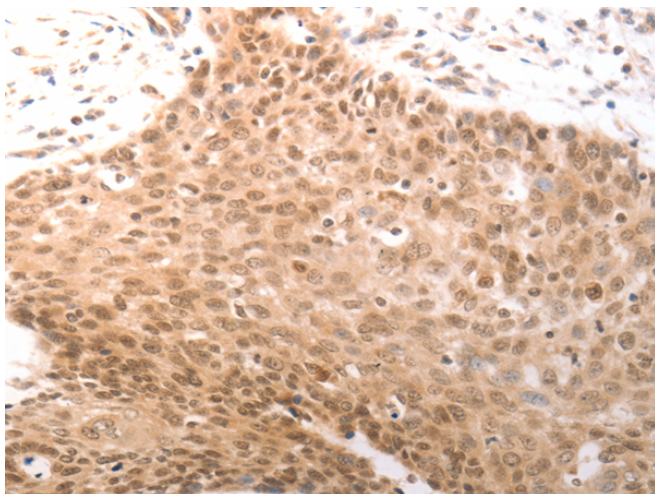
**纯化:** Antigen affinity purification

**种属反应性:** Human, Mouse, Rat

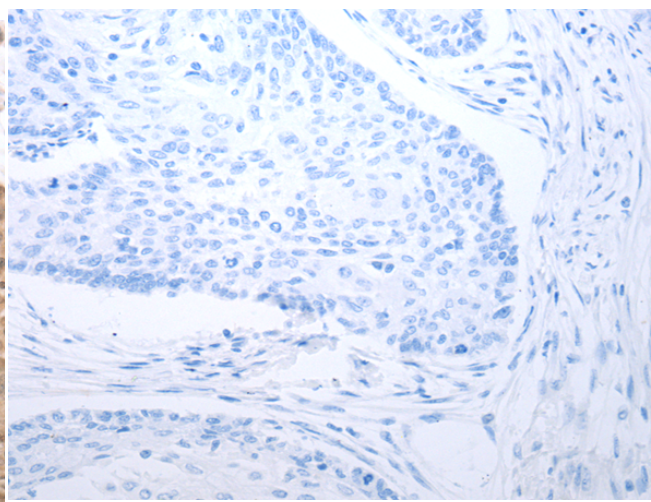
**成分:** PBS (without Mg<sup>2+</sup> and Ca<sup>2+</sup>), pH 7.4, 150 mM NaCl, 0.05% Sodium Azide and 40% glycerol

**研究领域:** Epigenetics and Nuclear Signaling, Cancer

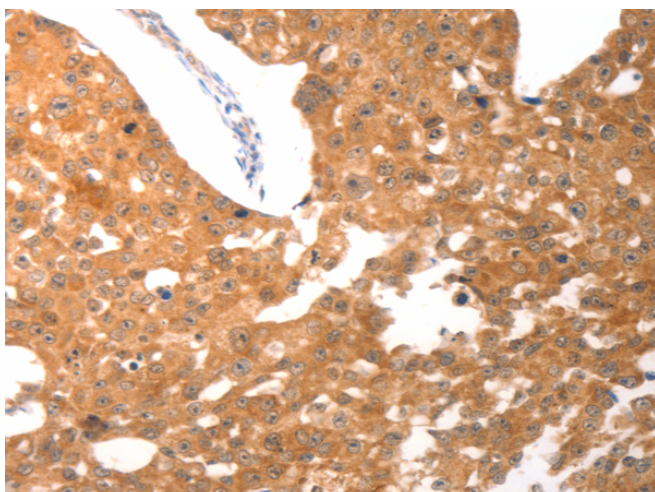
**储存和运输:** Store at -20°C. Avoid repeated freezing and thawing



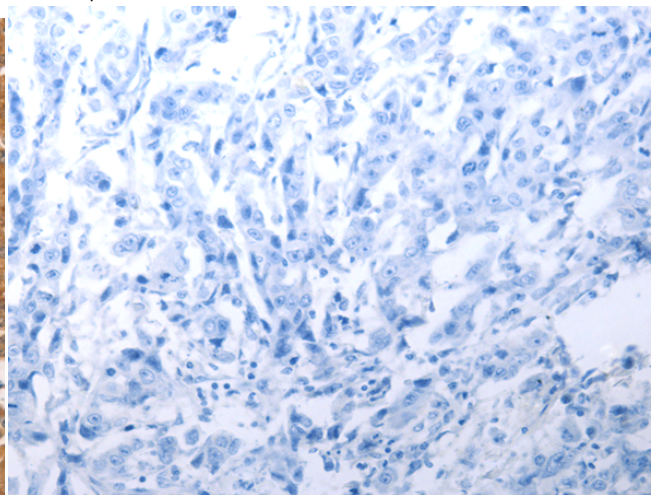
Immunohistochemistry analysis of paraffin embedded Human cervical cancer tissue using 213928(PARP1(cleaved) Antibody) at a dilution of 1/25(Cytoplasm, Nucleus).



In comparison with the IHC on the left, the same paraffin-embedded Human cervical cancer tissue is first treated with the synthetic peptide and then with 213928(Anti-PARP1(Anti-cleaved) Antibody) at dilution 1/25.



The image on the left is immunohistochemistry of paraffin-embedded Human breast cancer tissue using 213928(Anti-PARP1(Anti-cleaved) Antibody) at a dilution of 1/25.



In comparison with the IHC on the left, the same paraffin-embedded Human breast cancer tissue is first treated with synthetic peptide and then with D161072(Anti-PARP1(Anti-cleaved) Antibody) at dilution 1/25.

kDa

250 —  
130 —  
100 —  
70 —  
55 —  
35 —



Gel: 6%SDS-PAGE, Lysate: 40 µg;

Lane: Hela cell lysate;

Primary antibody: 213928(PARP1 (cleaved) Antibody) at dilution 1/500;

Secondary antibody: HRP-conjugated Goat anti rabbit IgG at 1/5000 dilution;

Exposure time: 3 minutes



# Product Description

Pioneering GTPase and Oncogene Product Development since 2010

---