

PALB2 RABBIT PAB

货号: S220162

产品全名: PALB2 兔多抗

基因符号: FANCN; PNCA3

UNIPROT ID: Q86YC2 (Gene Accession - NP_078951)

背景: This gene encodes a protein that may function in tumor suppression. This protein binds to and colocalizes with the breast cancer 2 early onset protein (BRCA2) in nuclear foci and likely permits the stable intranuclear localization and accumulation of BRCA2.

抗原: Synthetic peptide of human PALB2

经过测试的应用: ELISA, WB, IHC

推荐稀释比: IHC: 100-300;WB: 1000-5000;ELISA: 5000-10000

种属反应性: Rabbit

克隆性: Rabbit Polyclonal

亚型: Immunogen-specific rabbit IgG

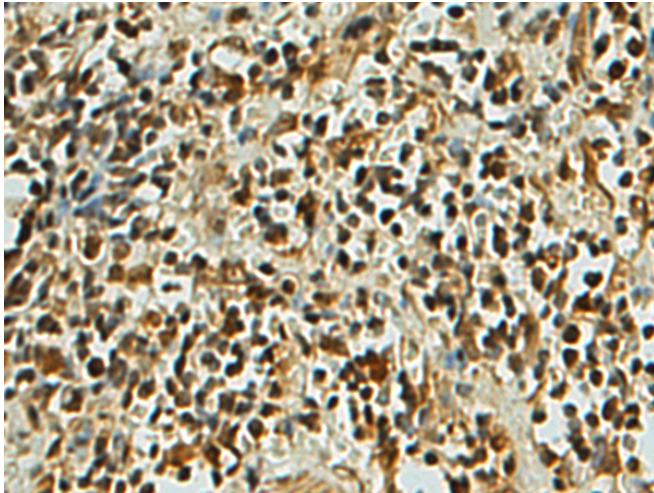
纯化: Antigen affinity purification

种属反应性: Human, Mouse

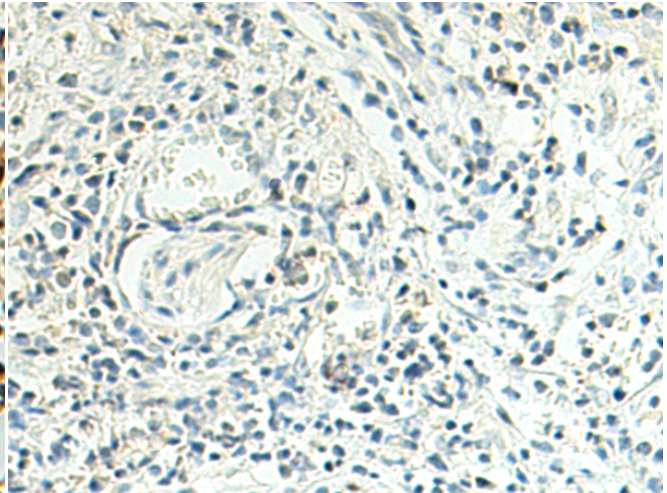
成分: PBS (without Mg²⁺ and Ca²⁺), pH 7.4, 150 mM NaCl, 0.05% Sodium Azide and 40% glycerol

研究领域: Epigenetics and Nuclear Signaling, Cancer

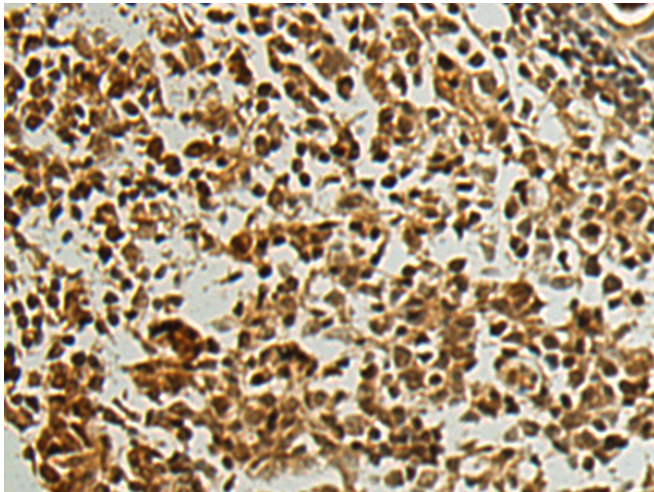
储存和运输: Store at -20°C. Avoid repeated freezing and thawing



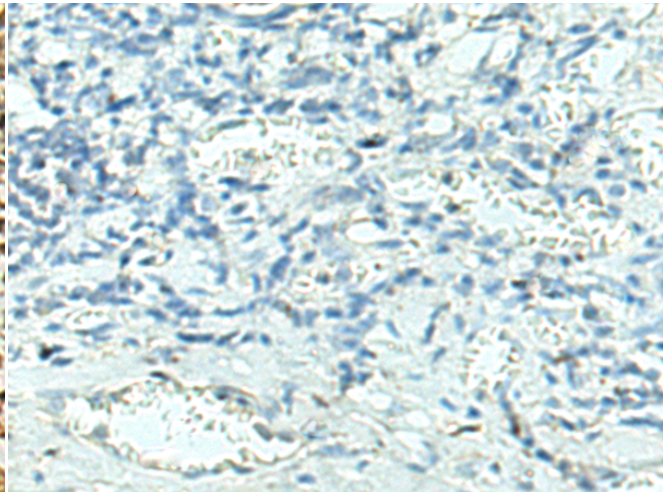
Immunohistochemistry analysis of paraffin embedded Human esophagus cancer tissue using 220162(PALB2 Antibody) at a dilution of 1/115(Nucleus).



In comparison with the IHC on the left, the same paraffin-embedded Human esophagus cancer tissue is first treated with the synthetic peptide and then with 220162(Anti-PALB2 Antibody) at dilution 1/115.

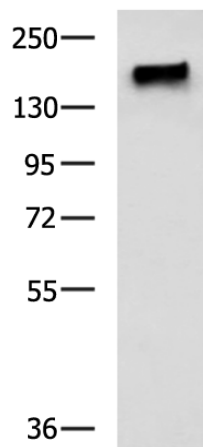


The image on the left is immunohistochemistry of paraffin-embedded Human thyroid cancer tissue using 220162(Anti-PALB2 Antibody) at a dilution of 1/115.



In comparison with the IHC on the left, the same paraffin-embedded Human thyroid cancer tissue is first treated with synthetic peptide and then with D261065(Anti-PALB2 Antibody) at dilution 1/115.

kDa



Gel: 6%SDS-PAGE, Lysate: 40 µg;
 Lane: Hela cell lysate;
 Primary antibody: 220162(PALB2 Antibody) at dilution 1/1600;
 Secondary antibody: HRP-conjugated Goat anti rabbit IgG at 1/5000 dilution;
 Exposure time: 1 minute



Product Description

Pioneering GTPase and Oncogene Product Development since 2010
