

## PAK3 RABBIT PAB

货号: S213925

产品全名: PAK3 兔多抗

基因符号: bPAK; MRX30; MRX47; OPHN3; hPAK3; CDKN1A; PAK3beta

**UNIPROT ID:** O75914 (Gene Accession - NP\_002569)

**背景:** PAK proteins are critical effectors that link Rho GTPases to cytoskeleton reorganization and nuclear signaling. PAK proteins, a family of serine/threonine p21-activating kinases, serve as targets for the small GTP binding proteins Cdc42 and RAC and have been implicated in a wide range of biological activities. The protein encoded by this gene forms an activated complex with GTP-bound RAS-like (P21), CDC2 and RAC1 proteins which then catalyzes a variety of targets.

**抗原:** Synthetic peptide of human PAK3

**经过测试的应用:** ELISA, WB, IHC

**推荐稀释比:** IHC: 20-100;WB: 200-1000;ELISA: 1000-2000

**种属反应性:** Rabbit

**克隆性:** Rabbit Polyclonal

**亚型:** Immunogen-specific rabbit IgG

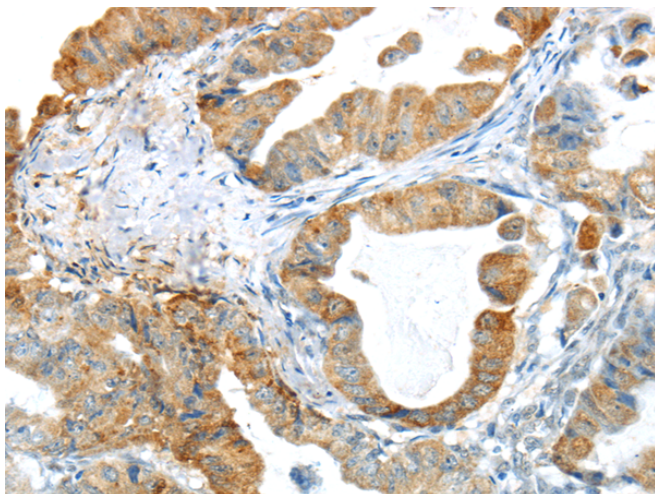
**纯化:** Antigen affinity purification

**种属反应性:** Human, Mouse, Rat

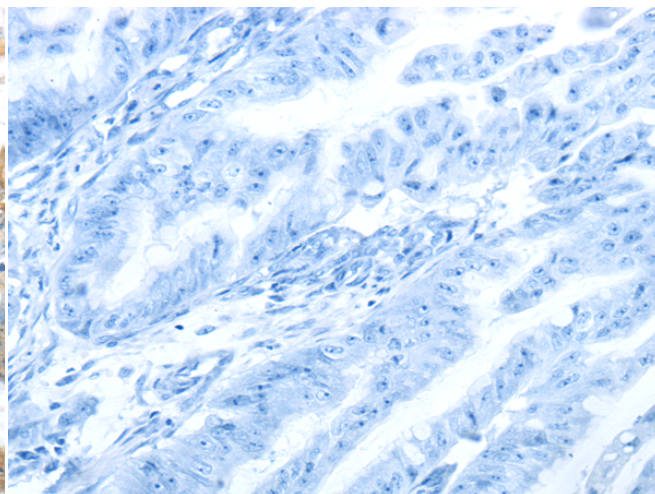
**成分:** PBS (without Mg<sup>2+</sup> and Ca<sup>2+</sup>), pH 7.4, 150 mM NaCl, 0.05% Sodium Azide and 40% glycerol

**研究领域:** Signal Transduction, Neuroscience

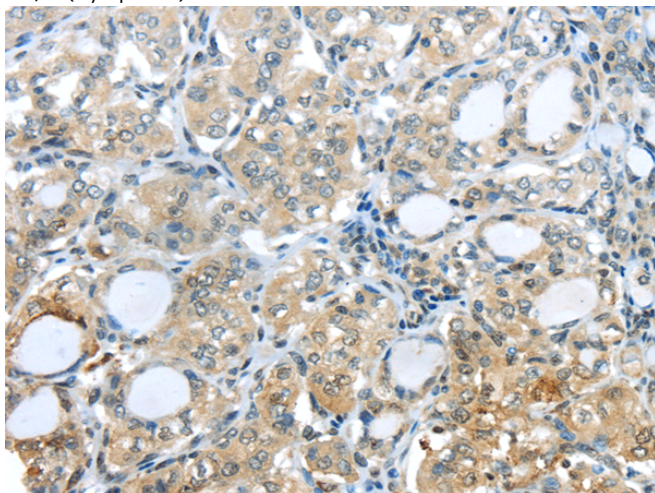
**储存和运输:** Store at -20°C. Avoid repeated freezing and thawing



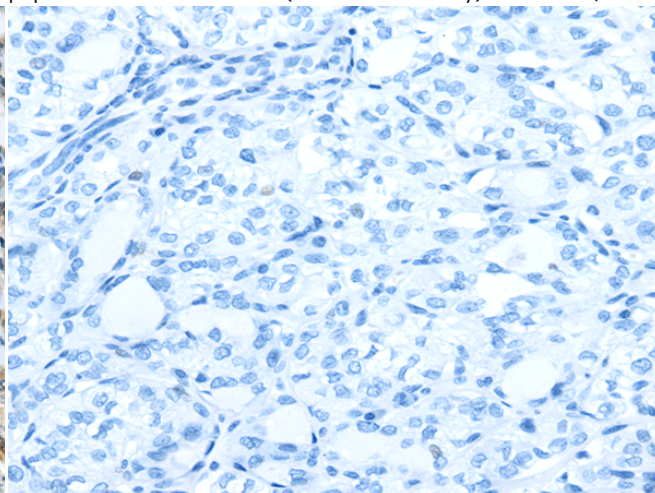
Immunohistochemistry analysis of paraffin embedded Human esophagus cancer tissue using 213925(PAK3 Antibody) at a dilution of 1/25(Cytoplasm).



In comparison with the IHC on the left, the same paraffin-embedded Human esophagus cancer tissue is first treated with the synthetic peptide and then with 213925(Anti-PAK3 Antibody) at dilution 1/25.



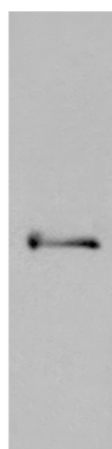
The image on the left is immunohistochemistry of paraffin-embedded Human thyroid cancer tissue using 213925(Anti-PAK3 Antibody) at a dilution of 1/25.



In comparison with the IHC on the left, the same paraffin-embedded Human thyroid cancer tissue is first treated with synthetic peptide and then with D161068(Anti-PAK3 Antibody) at dilution 1/25.

kDa

130 —  
95 —  
72 —  
55 —  
36 —



Gel: 6%SDS-PAGE, Lysate: 40 µg;  
Lane: Mouse brain tissue;  
Primary antibody: 213925(PAK3 Antibody) at dilution 1/200;  
Secondary antibody: Goat anti rabbit IgG at 1/8000 dilution;  
Exposure time: 1 minute



# Product Description

Pioneering GTPase and Oncogene Product Development since 2010

---