

PAK1IP1 RABBIT PAB

货号: S219158

产品全名: PAK1IP1 兔多抗

基因符号: AF11A; FAM116A

UNIPROT ID: Q8IWF6 (Gene Accession - BC040291)

背景: Guanine nucleotide exchange factor (GEF) for RAB14. Component of an endocytic recycling pathway that is required for the control of ADAM10 transport, shedding of N-cadherin/CDH2 by ADAM9 or ADAM10 and regulation of cell-cell junctions. Required for RAB14 recruitment to recycling endosomes.

抗原: Fusion protein of human DENND6A

经过测试的应用: ELISA, WB, IHC

推荐稀释比: IHC: 100-200;WB: 500-2000;ELISA: 5000-10000

种属反应性: Rabbit

克隆性: Rabbit Polyclonal

亚型: Immunogen-specific rabbit IgG

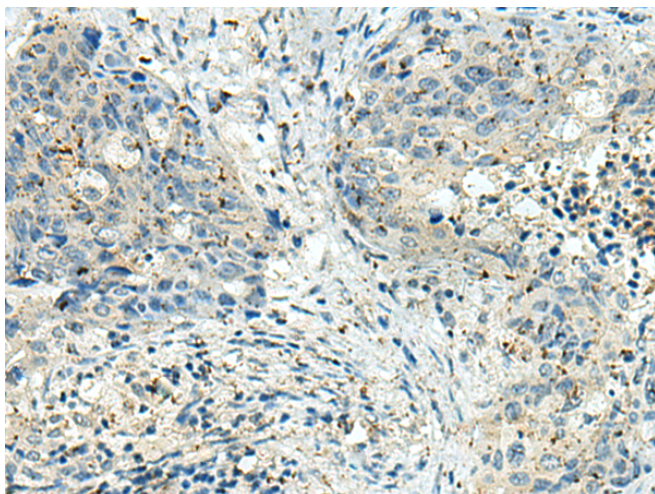
纯化: Antigen affinity purification

种属反应性: Human, Mouse

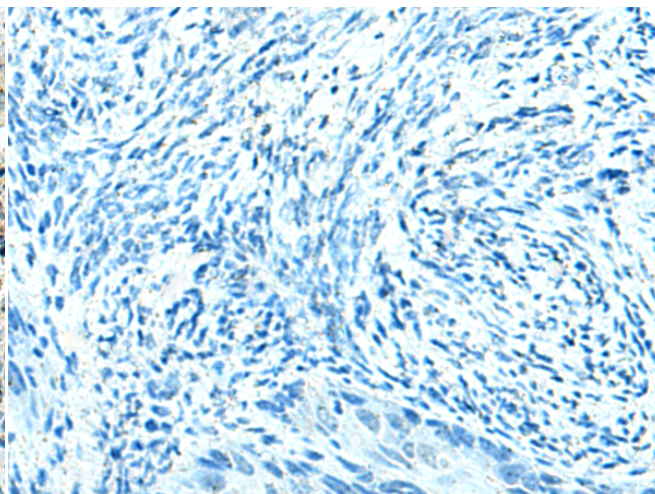
成分: PBS (without Mg²⁺ and Ca²⁺), pH 7.4, 150 mM NaCl, 0.05% Sodium Azide and 40% glycerol

研究领域: Signal Transduction

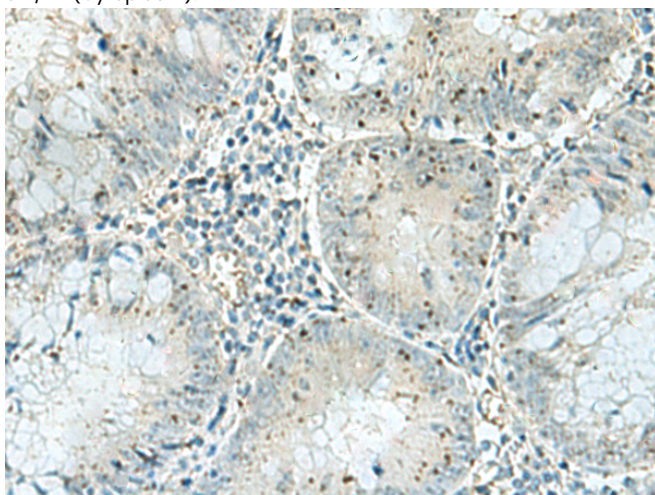
储存和运输: Store at -20°C. Avoid repeated freezing and thawing



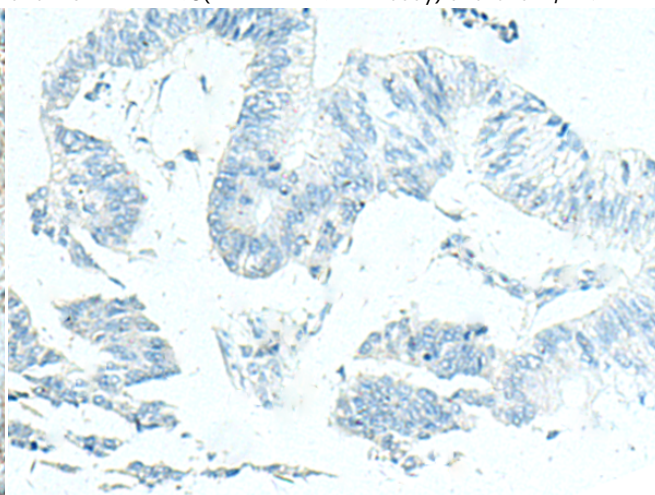
Immunohistochemistry analysis of paraffin embedded Human cervical cancer tissue using 219158 (DENND6A Antibody) at a dilution of 1/120 (Cytoplasm).



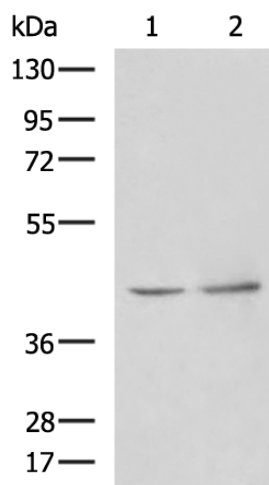
In comparison with the IHC on the left, the same paraffin-embedded Human cervical cancer tissue is first treated with the fusion protein and then with 219158 (Anti-DENND6A Antibody) at dilution 1/120.



The image on the left is immunohistochemistry of paraffin-embedded Human colorectal cancer tissue using 219158 (Anti-DENND6A Antibody) at a dilution of 1/120.



In comparison with the IHC on the left, the same paraffin-embedded Human colorectal cancer tissue is first treated with fusion protein and then with D225939 (Anti-DENND6A Antibody) at dilution 1/120.



Gel: 8% SDS-PAGE, Lysate: 40 µg;
 Lane 1-2: Human heart tissue, Hela cell lysates;
 Primary antibody: 219158 (PAK1IP1 Antibody) at dilution 1/900;
 Secondary antibody: HRP-conjugated Goat anti rabbit IgG at 1/5000 dilution;
 Exposure time: 10 seconds



Product Description

Pioneering GTPase and Oncogene Product Development since 2010
