

## PAK1 RABBIT MAB

货号: N262670

产品全名: PAK1 兔单克隆抗体

基因符号 PAK1; Serine/threonine-protein kinase PAK 1; Alpha-PAK; p21-activated kinase 1; PAK-1; p65-PAK

**UNIPROT ID:** Q13153

**背景:** The activated kinase acts on a variety of targets. Likely to be the GTPase effector that links the Rho-related GTPases to the JNK MAP kinase pathway. Activated by CDC42 and RAC1. Involved in dissolution of stress fibers and reorganization of focal complexes. Involved in regulation of microtubule biogenesis through phosphorylation of TBCB.

**抗原:** A synthetic peptide of human PAK1

**经过测试的应用:** WB, ICC/IF, IP

**推荐稀释比:** WB: 1/500-1/1000 IF: 1/50-1/200 IP: 1/20

**种属反应性:** Rabbit

**克隆性:** Rabbit Monoclonal

**克隆编号:** R08-515

**分子量:** Calculated MW: 61 kDa; Observed MW: 61 kDa

**亚型:** IgG

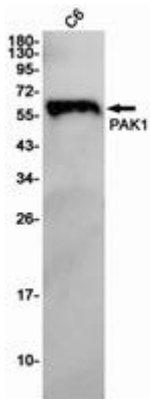
**纯化:** Affinity Purified

**种属反应性:** Human, Mouse and Rat

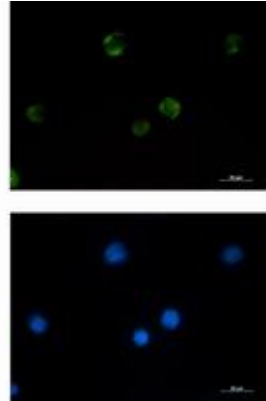
**成分:** PBS (without Mg<sup>2+</sup> and Ca<sup>2+</sup>), pH 7.3 containing 50% glycerol, 0.5% BSA and 0.02% sodium azide

**研究领域:** Cell Biology

**储存和运输:** Store at -20°C. Avoid repeated freezing and thawing



Western blot analysis of PAK1 in C6 lysates using PAK1 antibody.



Immunocytochemistry analysis of PAK1 (green) in Jurkat using PAK1 antibody, and DAPI (blue).