

PAK1 RABBIT MAB

货号: N263115

产品全名: PAK1 兔单克隆抗体

基因符号 PAK1; Serine/threonine-protein kinase PAK 1; Alpha-PAK; p21-activated kinase 1; PAK-1; p65-PAK

UNIPROT ID: Q13153

背景: The activated kinase acts on a variety of targets. Likely to be the GTPase effector that links the Rho-related GTPases to the JNK MAP kinase pathway. Activated by CDC42 and RAC1. Involved in dissolution of stress fibers and reorganization of focal complexes. Involved in regulation of microtubule biogenesis through phosphorylation of TBCB.

抗原: A synthetic peptide of human PAK1

经过测试的应用: WB,IHC-F,IHC-P,ICC/IF,IP

推荐稀释比: WB: 1/500-1/1000 IHC: 1/50-1/100 IF: 1/50-1/200 IP: 1/20

种属反应性: Rabbit

克隆性: Rabbit Monoclonal

克隆编号: R02-5G3

分子量: Calculated MW: 61 kDa; Observed MW: 61 kDa

亚型: IgG

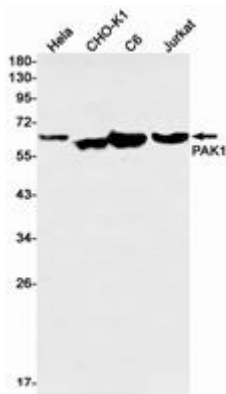
纯化: Affinity Purified

种属反应性: Human, Mouse and Rat,Hamster

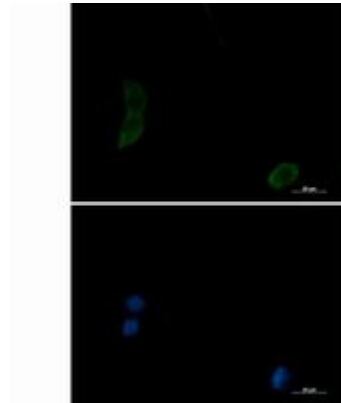
成分: PBS (without Mg²⁺ and Ca²⁺), pH 7.3 containing 50% glycerol, 0.5% BSA and 0.02% sodium azide

研究领域: Cell Biology

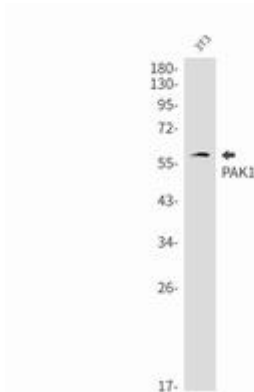
储存和运输: Store at -20°C. Avoid repeated freezing and thawing



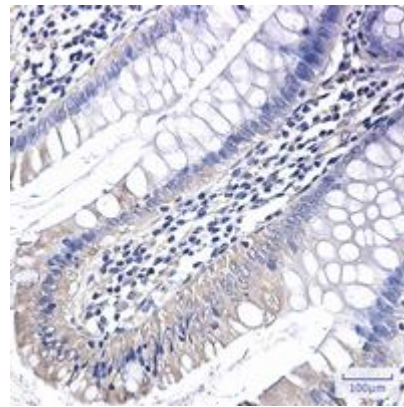
Western blot analysis of PAK1 in Hela, CHO-K1, C6, Jurkat lysates using PAK1 antibody



Immunocytochemistry analysis of PAK1 (green) in 3T3 using PAK1 antibody, and DAPI (blue).



Western blot analysis of PAK1 in 3T3 lysates using PAK1 antibody.



Immunohistochemistry analysis of paraffin-embedded Human colon cancer using PAK1 antibody. High-pressure and temperature Sodium Citrate pH 6.0 was used for antigen retrieval.