

## PACSIN3 RABBIT MAB

**Cat.#:** N263137

**Product Name:** Anti-PACSIN3 Rabbit Monoclonal Antibody

**Synonyms:** SDPIII

**UNIPROT ID:** Q9UKS6

**Background:** Plays a role in endocytosis and regulates internalization of plasma membrane proteins.

**Immunogen:** A synthetic peptide of human PACSIN3

**Applications:** WB,IHC-F,IHC-P,ICC/IF,IP

**Recommended Dilutions:** WB: 1/500-1/1000 IHC: 1/50-1/100 IF: 1/50-1/200 IP: 1/20

**Host Species:** Rabbit

**Clonality:** Rabbit Monoclonal

**Clone ID:** R04-1F1

**MW:** Calculated MW: 48 kDa; Observed MW: 48 kDa

**Isotype:** IgG

**Purification:** Affinity Purified

**Species Reactivity:** Human

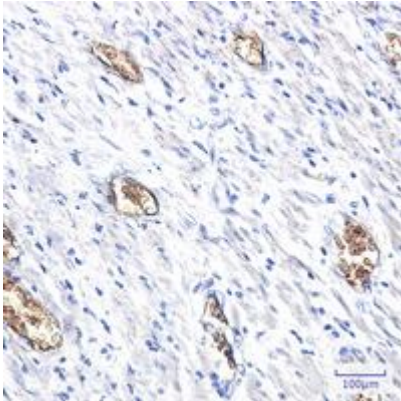
**Conjugation:** Unconjugated

**Modification:** Unmodified

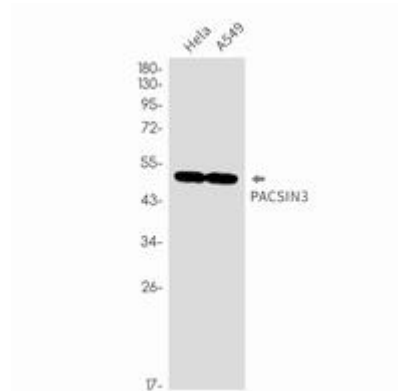
**Constituents:** PBS (without Mg<sup>2+</sup> and Ca<sup>2+</sup>), pH 7.3 containing 50% glycerol, 0.5% BSA and 0.02% sodium azide

**Research Areas:** -

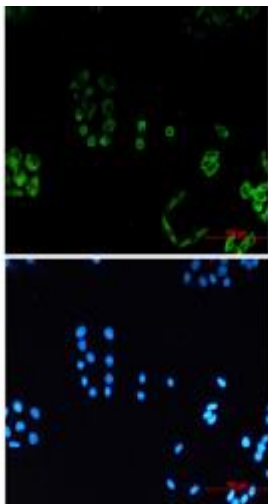
**Storage & Shipping:** Store at -20°C. Avoid repeated freezing and thawing



Immunohistochemistry analysis of paraffin-embedded Human colon cancer using PACSIN3 antibody. High-pressure and temperature Sodium Citrate pH 6.0 was used for antigen retrieval.



Western blot analysis of PACSIN3 in HeLa, A549 lysates using PACSIN3 antibody.



Immunocytochemistry analysis of PACSIN3 (green) in HeLa using PACSIN3 antibody, and DAPI (blue)