

PABPC3 RABBIT PAB

货号: S219568

产品全名: PABPC3 兔多抗

基因符号: PABP3; tPABP; PABPL3

UNIPROT ID: Q9H361 (Gene Accession - BC027617)

背景: Binds the poly(A) tail of mRNA. May be involved in cytoplasmic regulatory processes of mRNA metabolism. Binds poly(A) with a slightly lower affinity as compared to PABPC1.

抗原: Fusion protein of human PABPC3

经过测试的应用: ELISA, WB, IHC

推荐稀释比: IHC: 50-200;WB: 500-2000;ELISA: 5000-10000

种属反应性: Rabbit

克隆性: Rabbit Polyclonal

亚型: Immunogen-specific rabbit IgG

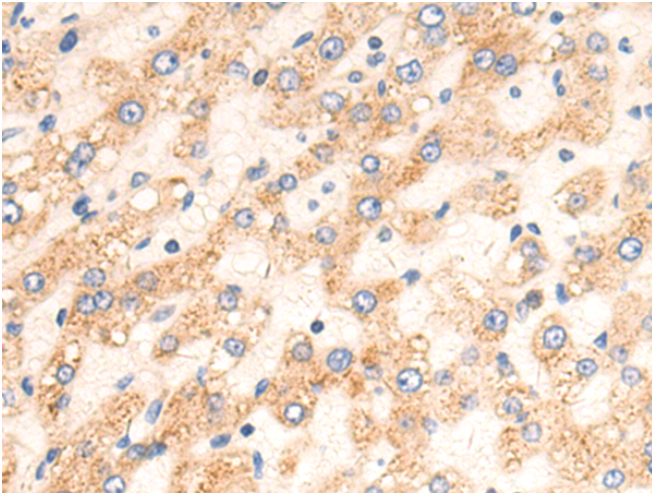
纯化: Antigen affinity purification

种属反应性: Human, Mouse

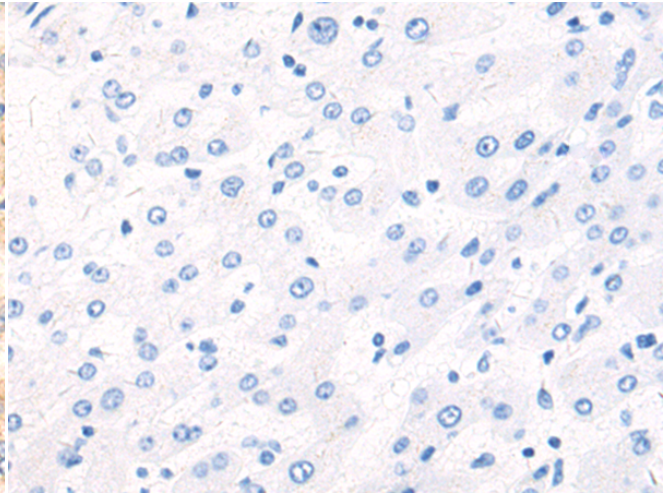
成分: PBS (without Mg²⁺ and Ca²⁺), pH 7.4, 150 mM NaCl, 0.05% Sodium Azide and 40% glycerol

研究领域: Epigenetics and Nuclear Signaling

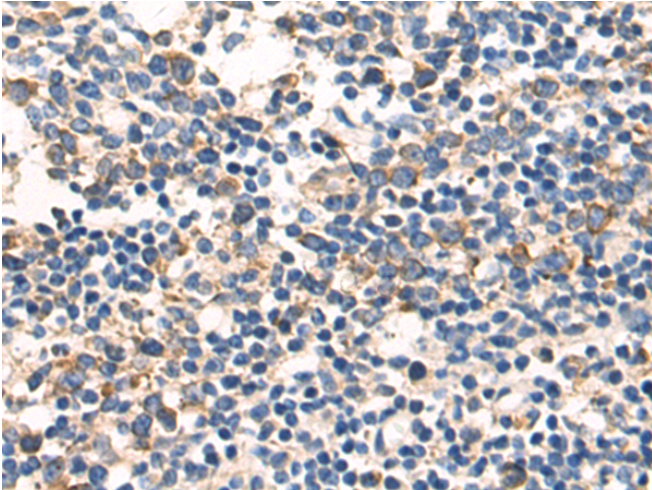
储存和运输: Store at -20°C. Avoid repeated freezing and thawing



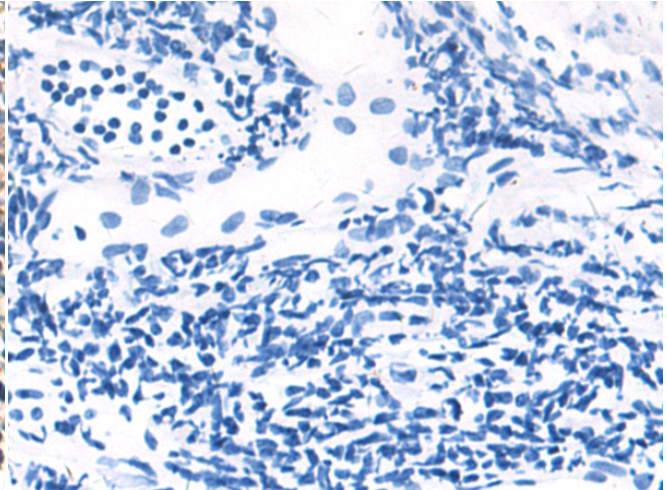
Immunohistochemistry analysis of paraffin embedded Human liver cancer tissue using 219568(PABPC3 Antibody) at a dilution of 1/60(Cytoplasm).



In comparison with the IHC on the left, the same paraffin-embedded Human liver cancer tissue is first treated with the fusion protein and then with 219568(Anti-PABPC3 Antibody) at dilution 1/60.



The image on the left is immunohistochemistry of paraffin-embedded Human tonsil tissue using 219568(Anti-PABPC3 Antibody) at a dilution of 1/60.



In comparison with the IHC on the left, the same paraffin-embedded Human tonsil tissue is first treated with fusion protein and then with D227779(Anti-PABPC3 Antibody) at dilution 1/60.

kDa

130 —
100 —
70 —
55 —
35 —
25 —
15 —



Gel: 8%SDS-PAGE, Lysate: 40 µg;
Lane: TM4 cell lysate;
Primary antibody: 219568(PABPC3 Antibody) at dilution 1/900;
Secondary antibody: HRP-conjugated Goat anti rabbit IgG at 1/5000 dilution;
Exposure time: 20 seconds



Product Description

Pioneering GTPase and Oncogene Product Development since 2010
