

## **P38 (6F5) MOUSE MAB**

货号: N261352

产品全名: p38 (6F5) 小鼠单抗

基因符号 MAPK14; CSBP; CSBP1; CSBP2; CSPB1; MXI2; SAPK2A; Mitogen-activated protein kinase 14; MAP kinase 14; MAPK 14; Cytokine suppressive anti-inflammatory drug-binding protein; CSAID-binding protein; CSBP; MAP kinase MXI2; MAX-interacting 蛋白

**UNIPROT ID:** Q16539

**背景:** Responds to activation by environmental stress, pro-inflammatory cytokines and lipopolysaccharide (LPS) by phosphorylating a number of transcription factors, such as ELK1 and ATF2 and several downstream kinases, such as MAPKAPK2 and MAPKAPK5. Plays a critical role in the production of some cytokines, for example IL-6.

**抗原:** Synthetic peptide conjugated to KLH.

**经过测试的应用:** IHC-P

**推荐稀释比:** IHC: 1/50-1/100

**种属反应性:** Mouse

**克隆性:** Mouse Monoclonal

**克隆编号:** 6F5-8A4-6G10

**分子量:** -

**亚型:** IgG1

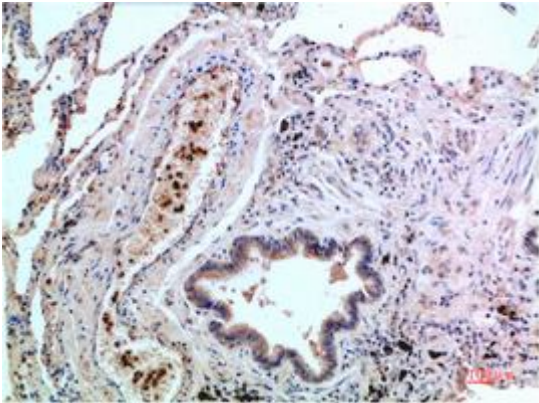
**纯化:** Affinity Purified

**种属反应性:** Human,Rat,Mouse

**成分:** PBS (without Mg<sup>2+</sup> and Ca<sup>2+</sup>), pH 7.3 containing 50% glycerol, 0.5% BSA and 0.02% sodium azide

**研究领域:** Signal Transduction

**储存和运输:** Store at -20°C. Avoid repeated freezing and thawing



Immunohistochemistry analysis of paraffin-embedded Human Lung Carcinoma Tissue using p38 (6F5) antibody. High-pressure and temperature Sodium Citrate pH 6.0 was used for antigen retrieval.