

P2Y6 RABBIT MAB

货号: N261605

产品全名: P2Y6 兔单克隆抗体

基因符号 P2ry6; P2Y6; P2Y6 receptor; PP2891

UNIPROT ID: Q15077

背景: Receptor for extracellular UDP> UTP> ATP. The activity of this receptor is mediated by G proteins which activate a phosphatidylinositol-calcium second messenger system.

抗原: A synthetic peptide of human P2Y6

经过测试的应用: WB,IHC-F,IHC-P,ICC/IF,IP

推荐稀释比: WB: 1/500-1/1000 IHC: 1/50-1/100 IF: 1/50-1/200 IP: 1/20

种属反应性: Rabbit

克隆性: Rabbit Monoclonal

克隆编号: R06-4D8

分子量: Calculated MW: 36 kDa; Observed MW: 36 kDa

亚型: IgG

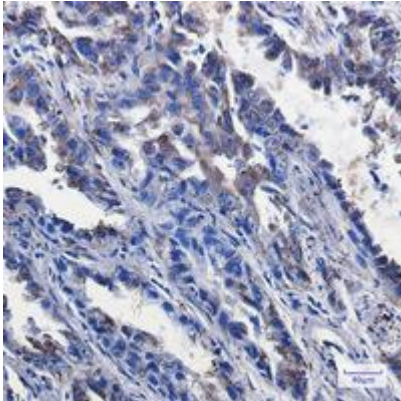
纯化: Affinity Purified

种属反应性: Human

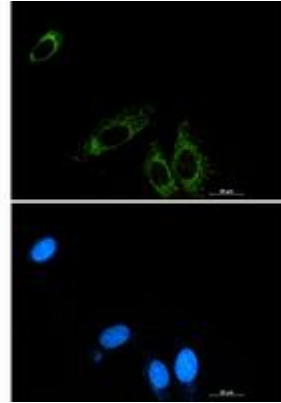
成分: PBS (without Mg²⁺ and Ca²⁺), pH 7.3 containing 50% glycerol, 0.5% BSA and 0.02% sodium azide

研究领域: Neuroscience&P2Y6

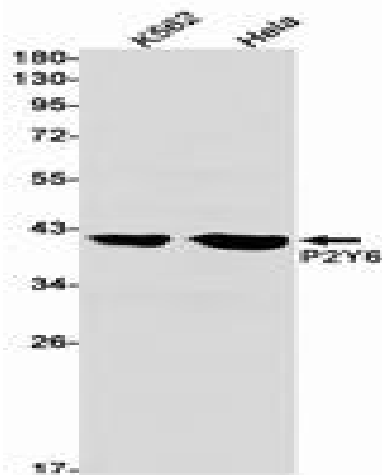
储存和运输: Store at -20°C. Avoid repeated freezing and thawing



Immunohistochemistry analysis of paraffin-embedded Human lung cancer tissue using P2Y6 antibody. High-pressure and temperature Sodium Citrate pH 6.0 was used for antigen retrieval.



Immunocytochemistry analysis of P2Y6 (green) in A549 using P2Y6 antibody, and DAPI (blue).



Western blot analysis of P2Y6 in K562, Hela lysates using P2Y6 antibody.