

P2RY4 RABBIT PAB

货号: S221316

产品全名: P2RY4 兔多抗

基因符号: NRU; P2P; UNR; P2Y4

UNIPROT ID: P51582 (Gene Accession - NP_002556)

背景: The product of this gene belongs to the family of G-protein coupled receptors. This family has several receptor subtypes with different pharmacological selectivity, which overlaps in some cases, for various adenosine and uridine nucleotides. This receptor is responsive to uridine nucleotides, partially responsive to ATP, and not responsive to ADP.

抗原: Synthetic peptide of human P2RY4

经过测试的应用: ELISA, WB, IHC

推荐稀释比: IHC: 50-100;WB: 500-2000;ELISA: 5000-10000

种属反应性: Rabbit

克隆性: Rabbit Polyclonal

亚型: Immunogen-specific rabbit IgG

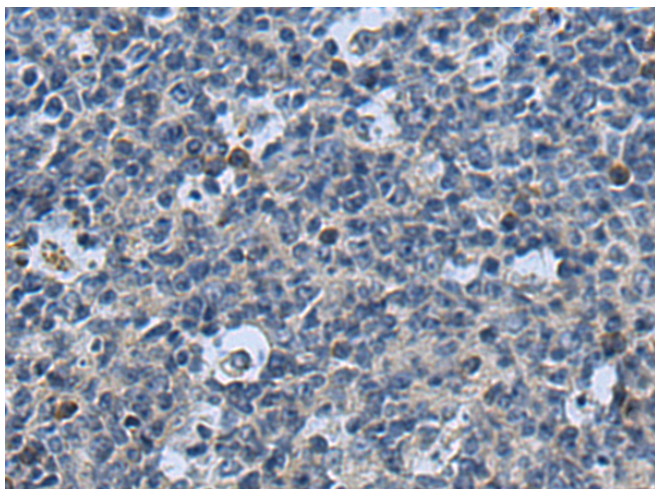
纯化: Antigen affinity purification

种属反应性: Human, Mouse

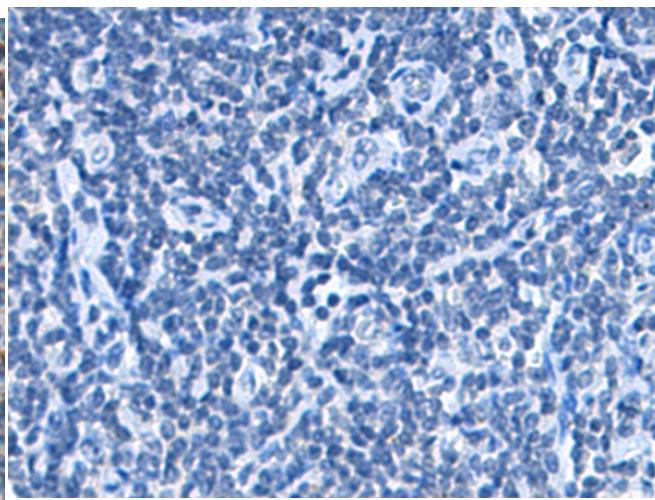
成分: PBS (without Mg²⁺ and Ca²⁺), pH 7.4, 150 mM NaCl, 0.05% Sodium Azide and 40% glycerol

研究领域: Signal Transduction

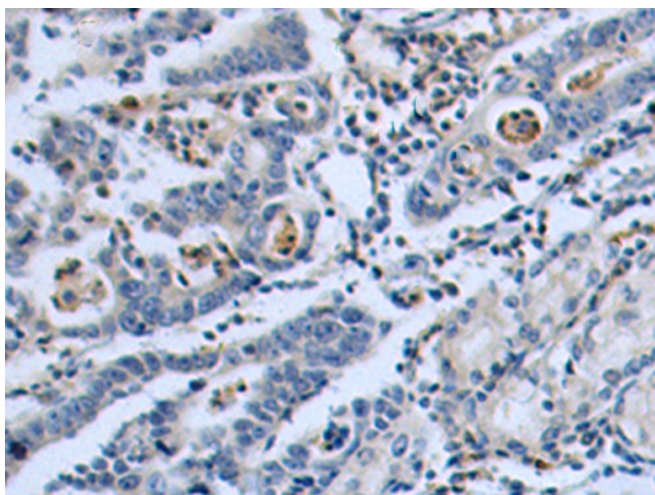
储存和运输: Store at -20°C. Avoid repeated freezing and thawing



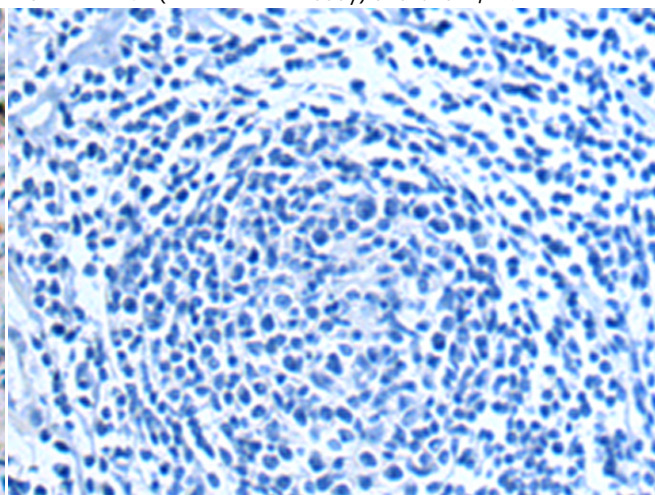
Immunohistochemistry analysis of paraffin embedded Human tonsil tissue using 221316 (P2RY4 Antibody) at a dilution of 1/115 (Cytoplasm).



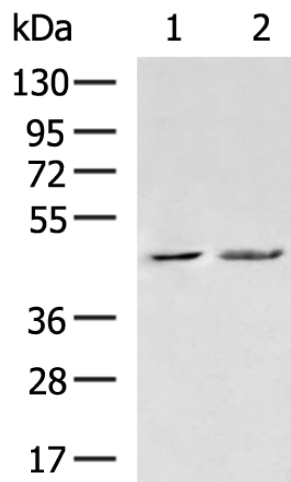
In comparison with the IHC on the left, the same paraffin-embedded Human tonsil tissue is first treated with the synthetic peptide and then with 221316 (Anti-P2RY4 Antibody) at dilution 1/115.



The image on the left is immunohistochemistry of paraffin-embedded Human gastric cancer tissue using 221316 (Anti-P2RY4 Antibody) at a dilution of 1/115.



In comparison with the IHC on the left, the same paraffin-embedded Human gastric cancer tissue is first treated with synthetic peptide and then with D262854 (Anti-P2RY4 Antibody) at dilution 1/115.



Gel: 8%SDS-PAGE, Lysate: 40 µg;
 Lane 1-2: Mouse heart tissue, A549 cell lysates;
 Primary antibody: 221316 (P2RY4 Antibody) at dilution 1/1000;
 Secondary antibody: HRP-conjugated Goat anti rabbit IgG at 1/5000 dilution;
 Exposure time: 2 minutes



Product Description

Pioneering GTPase and Oncogene Product Development since 2010
