

P16 ARC RABBIT MAB

货号: N261700

产品全名: p16 ARC 兔单克隆抗体

基因符号 p16 Arc; ARPC5; ARC16; Arp2/3 protein complex subunit p16

UNIPROT ID: O15511

背景: Functions as component of the Arp2/3 complex which is involved in regulation of actin polymerization and together with an activating nucleation-promoting factor (NPF) mediates the formation of branched actin networks.

抗原: A synthetic peptide of human p16 ARC

经过测试的应用: WB,IHC-P,IP

推荐稀释比: WB: 1/500-1/1000 IHC: 1/50-1/100 IP: 1/20

种属反应性: Rabbit

克隆性: Rabbit Monoclonal

克隆编号: R08-2B3

分子量: Calculated MW: 16 kDa; Observed MW: 16 kDa

亚型: IgG

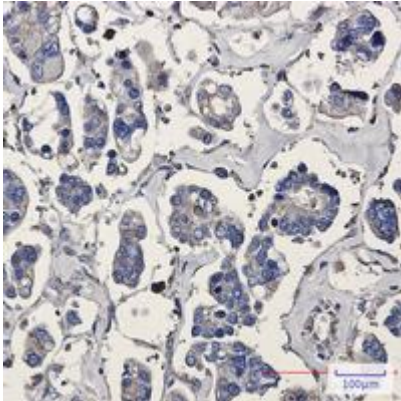
纯化: Affinity Purified

种属反应性: Human, Mouse and Rat

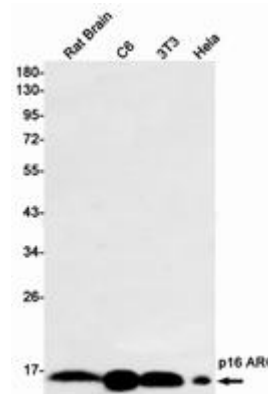
成分: PBS (without Mg²⁺ and Ca²⁺), pH 7.3 containing 50% glycerol, 0.5% BSA and 0.02% sodium azide

研究领域: Signal Transduction

储存和运输: Store at -20°C. Avoid repeated freezing and thawing



Immunohistochemistry analysis of paraffin-embedded Human Cholangiocarcinoma using p16 ARC antibody. High-pressure and temperature Sodium Citrate pH 6.0 was used for antigen retrieval.



Western blot analysis of p16 ARC in rat Brain, C6, 3T3, HeLa lysates using p16 ARC antibody.