

P150 CAF1 RABBIT MAB

货号: N262648

产品全名: p150 CAF1 兔单克隆抗体

基因符号 CHAF1A; CAF; CAFIP150; Chromatin assembly factor 1 subunit A; CAF-1 subunit A; Chromatin assembly factor 1 p150 subunit; CAF-I 150 kDa subunit; CAF-I p150; hp150

UNIPROT ID: Q13111

背景: Core component of the CAF-1 complex, a complex thought to mediate chromatin assembly in DNA replication and DNA repair. Assembles histone octamers onto replicating DNA in vitro. CAF-1 performs the first step of the nucleosome assembly process, bringing newly synthesized histones H3 and H4 to replicating DNA; histones H2A/H2B can bind to this chromatin precursor subsequent to DNA replication to complete the histone octamer.

抗原: A synthetic peptide of human p150 CAF1

经过测试的应用: WB,IHC-F,IHC-P,ICC/IF,IP

推荐稀释比: WB: 1/500-1/1000 IHC: 1/50-1/100 IF: 1/50-1/200 IP: 1/20

种属反应性: Rabbit

克隆性: Rabbit Monoclonal

克隆编号: R06-3A5

分子量: Calculated MW: 107 kDa; Observed MW: 150 kDa

亚型: IgG

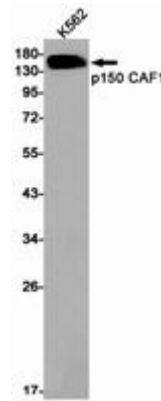
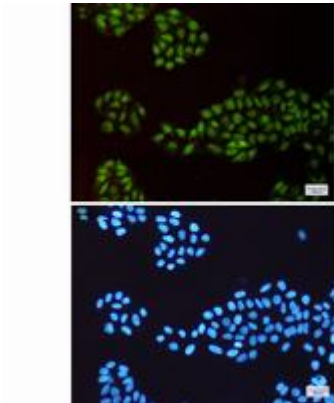
纯化: Affinity Purified

种属反应性: Human

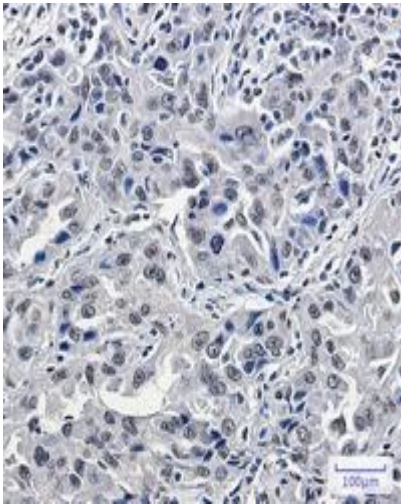
成分: PBS (without Mg²⁺ and Ca²⁺), pH 7.3 containing 50% glycerol, 0.5% BSA and 0.02% sodium azide

研究领域: Epigenetics and Nuclear Signaling

储存和运输: Store at -20°C. Avoid repeated freezing and thawing



Immunocytochemistry analysis of p150 CAF1 (green) in HeLa using p150 CAF1 antibody, and DAPI (blue) Western blot analysis of p150 CAF1 in K562 lysates using p150 CAF1 antibody.



Immunohistochemistry analysis of paraffin-embedded Human lung cancer using p150 CAF1/CAF antibody. High-pressure and temperature Sodium Citrate pH 6.0 was used for antigen retrieval.