

OTX1/2 RABBIT PAB

货号: N225890

产品全名: OTX1/2 兔多抗

基因符号 Homeobox protein OTX1; Homeobox protein OTX2; Orthodenticle 1; Orthodenticle 2; Orthodenticle homeobox 1; Orthodenticle homeobox 2; Orthodenticle1; Orthodenticle2; otx1; otx2

UNIPROT ID: P32242/P32243

背景: Probably plays a role in the development of the brain and the sense organs. Can bind to the BCD target sequence (BTS): 5'-TCTAATCCC-3'.

抗原: A synthesized peptide derived from human Otx1/2

经过测试的应用: WB,IHC-P,CHIP

推荐稀释比: WB: 1/500-1/1000 IHC: 1/50-1/100 CHIP: 1/20

种属反应性: Rabbit

克隆性: Rabbit Polyclonal

分子量: Calculated MW: 37 kDa; Observed MW: 32 kDa

亚型: IgG

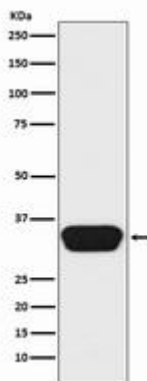
纯化: Affinity Chromatography

种属反应性: Human, Mouse and Rat

成分: PBS (without Mg²⁺ and Ca²⁺), pH 7.3 containing 50% glycerol, 0.5% BSA and 0.02% sodium azide

研究领域: Neuroscience

储存和运输: Store at -20°C. Avoid repeated freezing and thawing



Western blot analysis of Otx1/2 in Y79 lysates using OTX1/2 antibody.