

ORM1 RABBIT PAB

货号: S216981

产品全名: ORM1 兔多抗

基因符号: ORM; AGPI; AGP-A

UNIPROT ID: P02763 (Gene Accession - BC026238)

背景: This gene encodes a key acute phase plasma protein. Because of its increase due to acute inflammation, this protein is classified as an acute-phase reactant. The specific function of this protein has not yet been determined; however, it may be involved in aspects of immunosuppression.

抗原: Fusion protein of human ORM1

经过测试的应用: ELISA, WB, IHC

推荐稀释比: IHC: 15-50;WB: 200-1000;ELISA: 1000-2000

种属反应性: Rabbit

克隆性: Rabbit Polyclonal

亚型: Immunogen-specific rabbit IgG

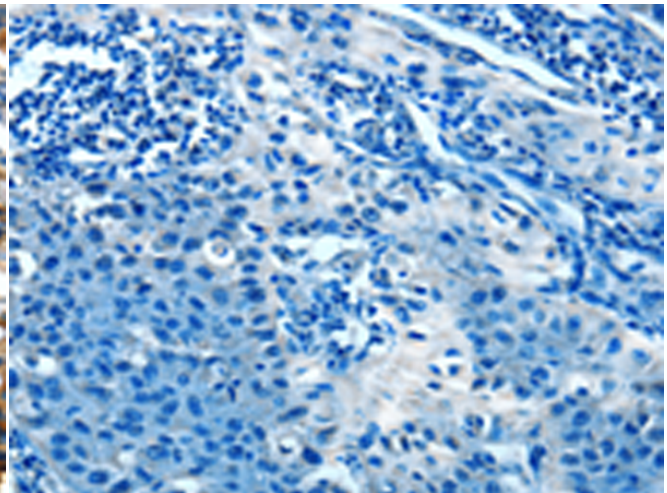
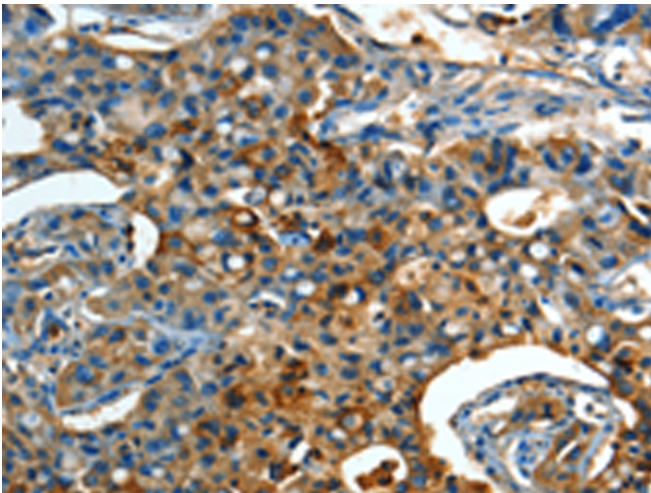
纯化: Antigen affinity purification

种属反应性: Human

成分: PBS (without Mg²⁺ and Ca²⁺), pH 7.4, 150 mM NaCl, 0.05% Sodium Azide and 40% glycerol

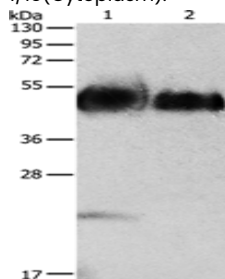
研究领域: Cardiovascular, Immunology

储存和运输: Store at -20°C. Avoid repeated freezing and thawing



Immunohistochemistry analysis of paraffin embedded Human lung cancer tissue using 216981(ORM1 Antibody) at a dilution of 1/15(Cytoplasm).

In comparison with the IHC on the left, the same paraffin-embedded Human lung cancer tissue is first treated with the fusion protein and then with 216981(Anti-ORM1 Antibody) at dilution 1/15.



Gel: 12%SDS-PAGE, Lysate: 40 µg;
Lane 1-2: Human testis tissue, Human prostate tissue;
Primary antibody: 216981(ORM1 Antibody) at dilution 1/160;
Secondary antibody: Goat anti rabbit IgG at 1/8000 dilution;
Exposure time: 2 minutes