

ORAI3 RABBIT MAB

货号: N263471

产品全名: ORAI3 兔单克隆抗体

基因符号 TMEM142C

UNIPROT ID: Q9BRQ5

背景: Ca²⁺ release-activated Ca²⁺-like (CRAC-like) channel subunit which mediates Ca²⁺ influx and increase in Ca²⁺-selective current by synergy with the Ca²⁺ sensor, STIM1.

抗原: Recombinant protein of human Orai3

经过测试的应用: WB,IHC-P

推荐稀释比: WB: 1/500-1/1000 IHC: 1/50-1/100

种属反应性: Rabbit

克隆性: Rabbit Monoclonal

克隆编号: R06-8B3

分子量: Calculated MW: 31 kDa; Observed MW: 31 kDa

亚型: IgG

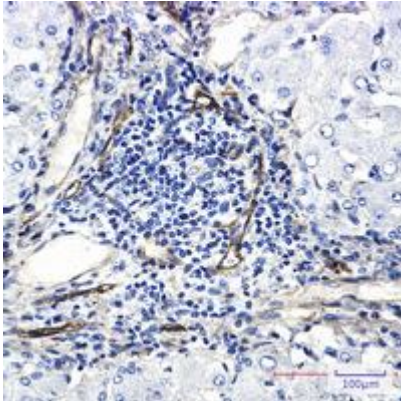
纯化: Affinity Purified

种属反应性: Human

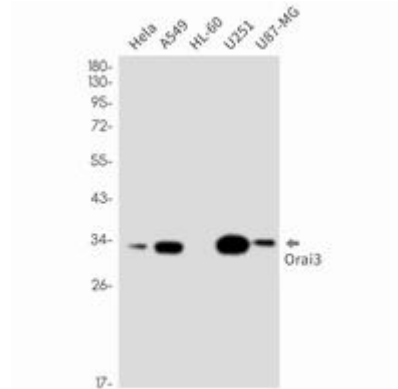
成分: PBS (without Mg²⁺ and Ca²⁺), pH 7.3 containing 50% glycerol, 0.5% BSA and 0.02% sodium azide

研究领域: -

储存和运输: Store at -20°C. Avoid repeated freezing and thawing



Immunohistochemistry analysis of paraffin-embedded liver cancer using Orai3 antibody. High-pressure and temperature Sodium Citrate pH 6.0 was used for antigen retrieval.



Western blot analysis of Orai3 in HeLa, A549, HL-60, U251, U87-MG lysates using ORAI3 antibody.