

ORAI1(L1) RABBIT PAB

货号: S220082

产品全名: ORAI1(L1) 兔多抗

基因符号: IMD9; TAM2; ORAT1; CRACM1; TMEM142A

UNIPROT ID: Q96D31 (Gene Accession - NP_116179)

背景: The protein encoded by this gene is a membrane calcium channel subunit that is activated by the calcium sensor STIM1 when calcium stores are depleted. This type of channel is the primary way for calcium influx into T-cells. Defects in this gene are a cause of immune dysfunction with T-cell inactivation due to calcium entry defect type 1 (IDTICED1).

抗原: Synthetic peptide of human ORAI1(L1)

经过测试的应用: ELISA, IHC

推荐稀释比: IHC: 50-200; ELISA: 5000-10000

种属反应性: Rabbit

克隆性: Rabbit Polyclonal

亚型: Immunogen-specific rabbit IgG

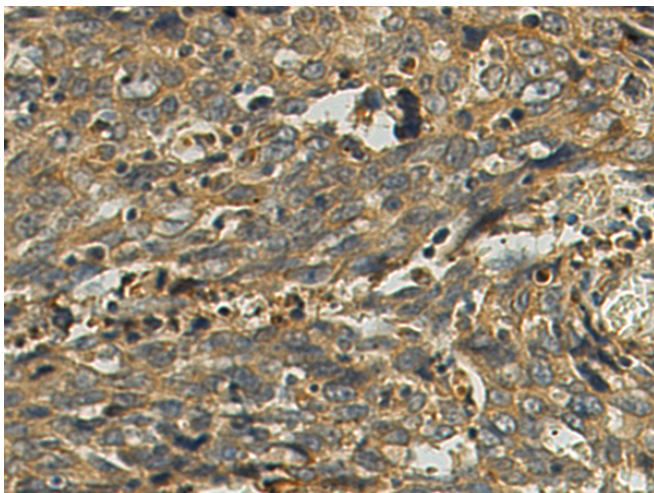
纯化: Antigen affinity purification

种属反应性: Human, Mouse, Rat

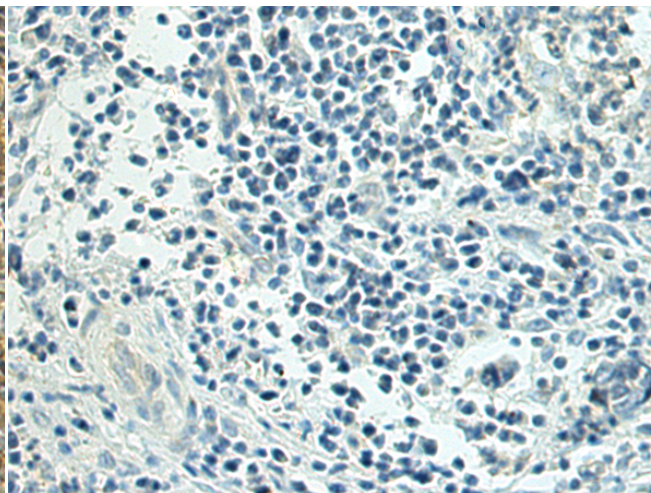
成分: PBS (without Mg²⁺ and Ca²⁺), pH 7.4, 150 mM NaCl, 0.05% Sodium Azide and 40% glycerol

研究领域: Signal Transduction, Immunology

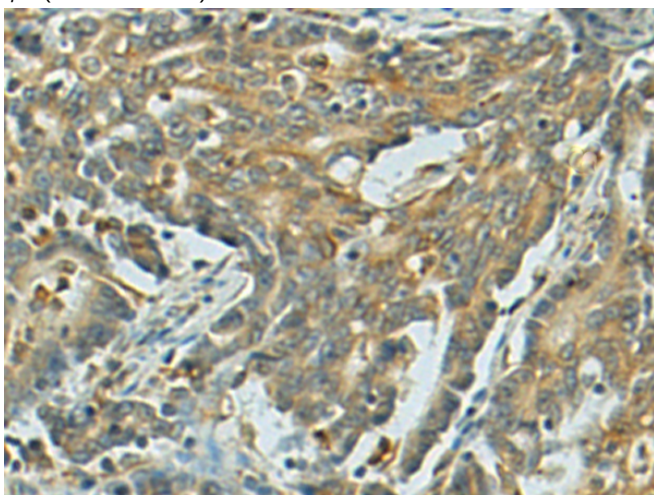
储存和运输: Store at -20°C. Avoid repeated freezing and thawing



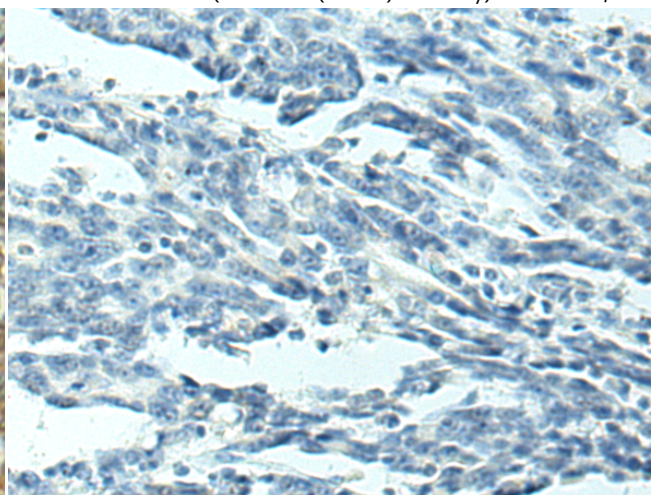
Immunohistochemistry analysis of paraffin embedded Human esophagus cancer using 220082(ORAI1(L1) Antibody) at a dilution of 1/50(Cell membrane).



In comparison with the IHC on the left, the same paraffin-embedded Human esophagus cancer is first treated with the synthetic peptide and then with 220082(Anti-ORAI1(Anti-L1) Antibody) at dilution 1/50.



The image on the left is immunohistochemistry of paraffin-embedded Human gastric cancer using 220082(Anti-ORAI1(Anti-L1) Antibody) at a dilution of 1/50.



In comparison with the IHC on the left, the same paraffin-embedded Human gastric cancer is first treated with synthetic peptide and then with D260922(Anti-ORAI1(Anti-L1) Antibody) at dilution 1/50.



Product Description

Pioneering GTPase and Oncogene Product Development since 2010
