

OLR1 RABBIT PAB

货号: S213628

产品全名: OLR1 兔多抗

基因符号 LOX1, LOXIN, SLOX1, CLEC8A, SCARE1

UNIPROT ID: P78380 (Gene Accession - NP_002534)

背景: This gene encodes a low density lipoprotein receptor that belongs to the C-type lectin superfamily. This gene is regulated through the cyclic AMP signaling pathway. The encoded protein binds, internalizes and degrades oxidized low-density lipoprotein. This protein may be involved in the regulation of Fas-induced apoptosis. This protein may play a role as a scavenger receptor. Mutations of this gene have been associated with atherosclerosis, risk of myocardial infarction, and may modify the risk of Alzheimer's disease. Alternate splicing results in multiple transcript variants.

抗原: Synthetic peptide of human OLR1

经过测试的应用: ELISA, WB, IHC

推荐稀释比: IHC: Oct-50;WB: 500-2000;ELISA: 1000-5000

种属反应性: Rabbit

克隆性: Rabbit Polyclonal

亚型: Immunogen-specific rabbit IgG

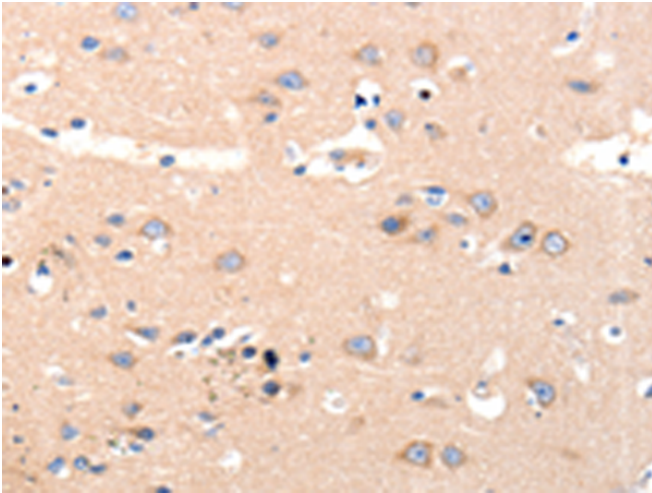
纯化: Antigen affinity purification

种属反应性: Human, Mouse

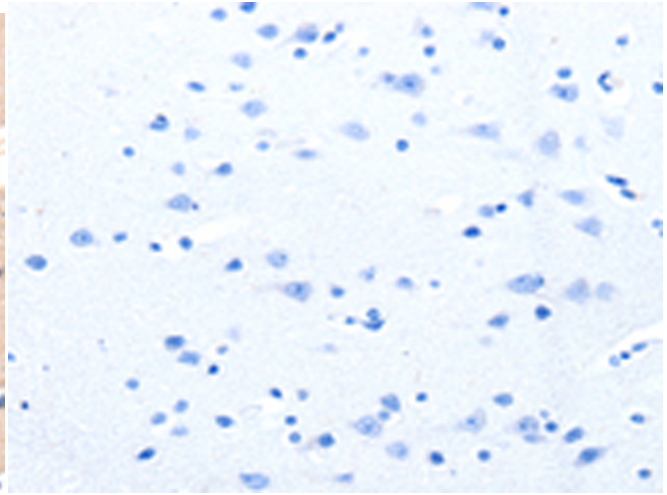
成分: PBS (without Mg²⁺ and Ca²⁺), pH 7.4, 150 mM NaCl, 0.05% Sodium Azide and 40% glycerol

研究领域: Metabolism, Cardiovascular

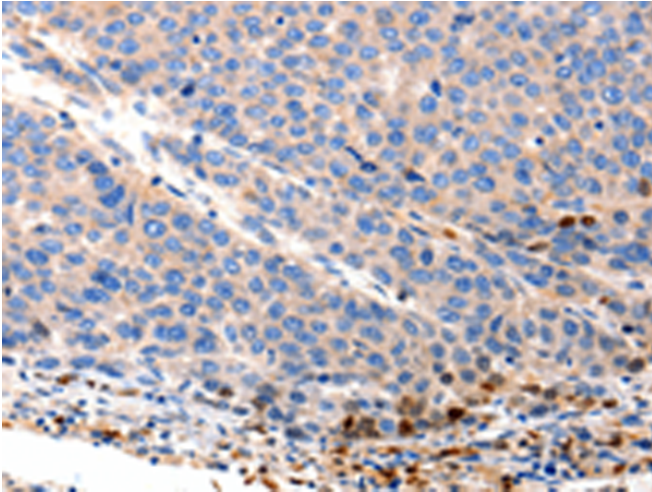
储存和运输: Store at -20°C. Avoid repeated freezing and thawing



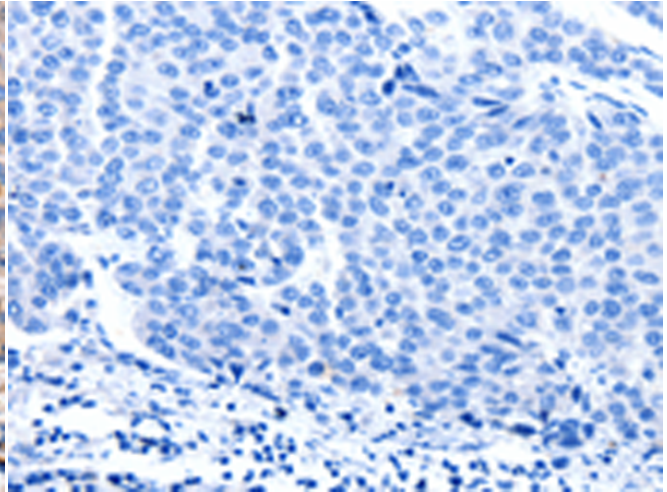
Immunohistochemistry analysis of paraffin embedded Human brain tissue using 213628(OLR1 Antibody) at a dilution of 1/12(Cytoplasm).



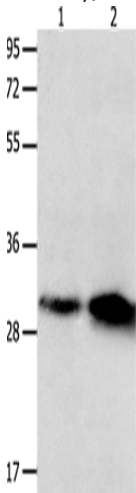
In comparison with the IHC on the left, the same paraffin-embedded Human brain tissue is first treated with the synthetic peptide and then with 213628(Anti-OLR1 Antibody) at dilution 1/12.



The image on the left is immunohistochemistry of paraffin-embedded Human liver cancer tissue using 213628(Anti-OLR1 Antibody) at a dilution of 1/12.



In comparison with the IHC on the left, the same paraffin-embedded Human liver cancer tissue is first treated with synthetic peptide and then with D160550(Anti-OLR1 Antibody) at dilution 1/12.



Gel: 12%SDS-PAGE, Lysate: 40 µg;
Lane 1-2: Mouse brain tissue, Mouse lung tissue;
Primary antibody: 213628(OLR1 Antibody) at dilution 1/250;
Secondary antibody: Goat anti rabbit IgG at 1/8000 dilution;
Exposure time: 30 seconds



Product Description

Pioneering GTPase and Oncogene Product Development since 2010
