

OLA1 RABBIT PAB

货号: S218680

产品全名: OLA1 兔多抗

基因符号: DOC45; GBP45; GTBP9; GTPBP9; PTD004

UNIPROT ID: Q9NTK5 (Gene Accession - BC012842)

背景: This gene encodes a member of the GTPase protein family. The encoded protein interacts with breast cancer-associated gene 1 (BRCA1) and BRCA1-associated RING domain protein (BARD1), and is involved in centrosome regulation. Overexpression of this gene has been observed in multiple types of cancer and may be associated with poor survival. Pseudogenes of this gene have been defined on chromosomes 17 and 22.

抗原: Fusion protein of human OLA1

经过测试的应用: ELISA, WB, IHC

推荐稀释比: IHC: 50-300;WB: 500-2000;ELISA: 5000-10000

种属反应性: Rabbit

克隆性: Rabbit Polyclonal

亚型: Immunogen-specific rabbit IgG

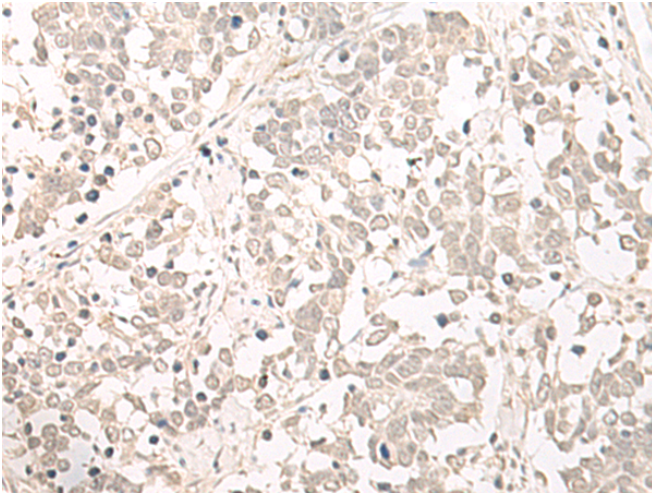
纯化: Antigen affinity purification

种属反应性: Human, Mouse, Rat

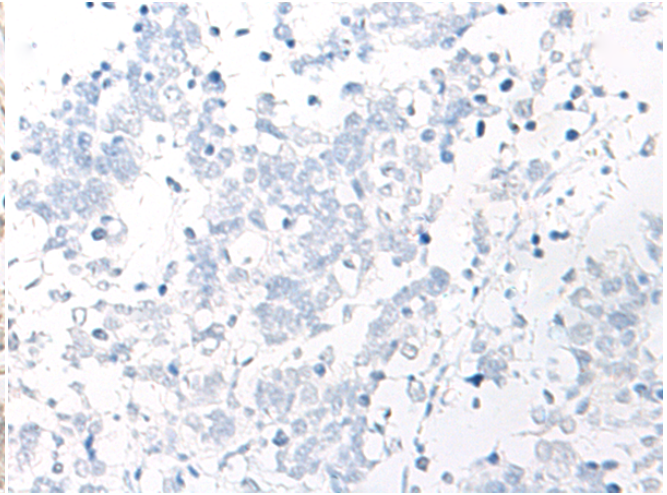
成分: PBS (without Mg²⁺ and Ca²⁺), pH 7.4, 150 mM NaCl, 0.05% Sodium Azide and 40% glycerol

研究领域: Signal Transduction, Cell Biology

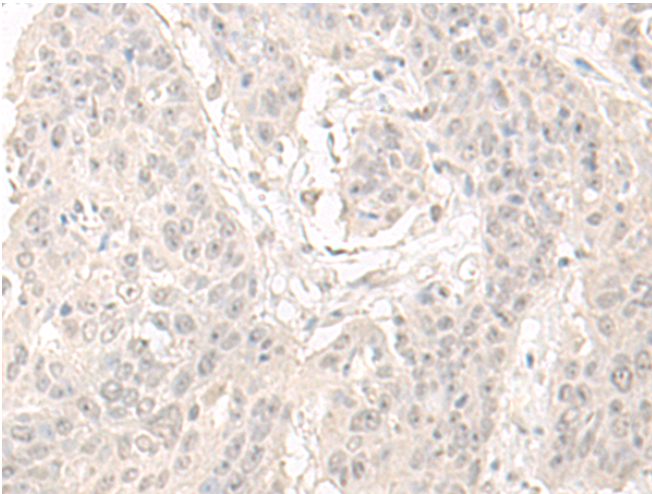
储存和运输: Store at -20°C. Avoid repeated freezing and thawing



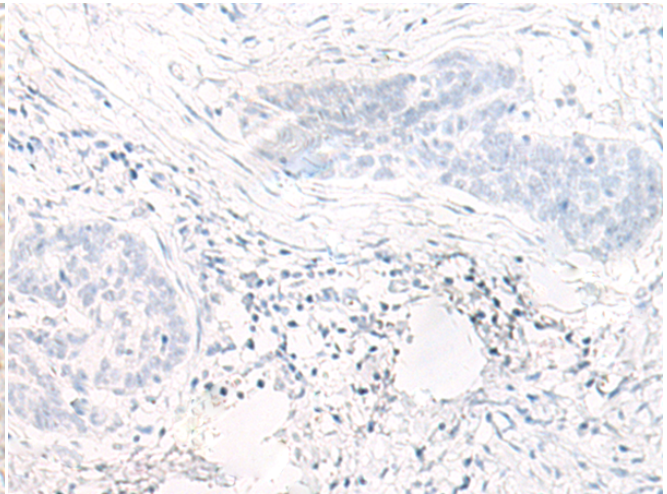
Immunohistochemistry analysis of paraffin embedded Human lung cancer tissue using 218680(OLA1 Antibody) at a dilution of 1/55(Cytoplasm and Nucleus).



In comparison with the IHC on the left, the same paraffin-embedded Human lung cancer tissue is first treated with the fusion protein and then with 218680(Anti-OLA1 Antibody) at dilution 1/55.

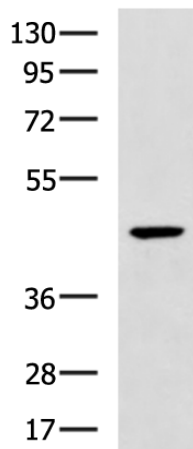


The image on the left is immunohistochemistry of paraffin-embedded Human esophagus cancer tissue using 218680(Anti-OLA1 Antibody) at a dilution of 1/55.



In comparison with the IHC on the left, the same paraffin-embedded Human esophagus cancer tissue is first treated with fusion protein and then with D224934(Anti-OLA1 Antibody) at dilution 1/55.

kDa



Gel: 8%SDS-PAGE, Lysate: 40 µg;
Lane: A375 cell lysate;
Primary antibody: 218680(OLA1 Antibody) at dilution 1/500;
Secondary antibody: HRP-conjugated Goat anti rabbit IgG at 1/5000 dilution;
Exposure time: 20 seconds



Product Description

Pioneering GTPase and Oncogene Product Development since 2010
