

ODF2 RABBIT PAB

货号: S221717

产品全名: ODF2 兔多抗

基因符号 CT134; ODF84; ODF2/1; ODF2/2

UNIPROT ID: Q5BJF6 (Gene Accession - NP_702911)

背景: The outer dense fibers are cytoskeletal structures that surround the axoneme in the middle piece and principal piece of the sperm tail. The fibers function in maintaining the elastic structure and recoil of the sperm tail as well as in protecting the tail from shear forces during epididymal transport and ejaculation. Defects in the outer dense fibers lead to abnormal sperm morphology and infertility. This gene encodes one of the major outer dense fiber proteins. Alternative splicing results in multiple transcript variants. The longer transcripts, also known as 'Cenexins', encode proteins with a C-terminal extension that are differentially targeted to somatic centrioles and thought to be crucial for the formation of microtubule organizing centers.

抗原: Synthetic peptide of human ODF2

经过测试的应用: ELISA, IHC

推荐稀释比: IHC: 50-300; ELISA: 5000-10000

种属反应性: Rabbit

克隆性: Rabbit Polyclonal

亚型: Immunogen-specific rabbit IgG

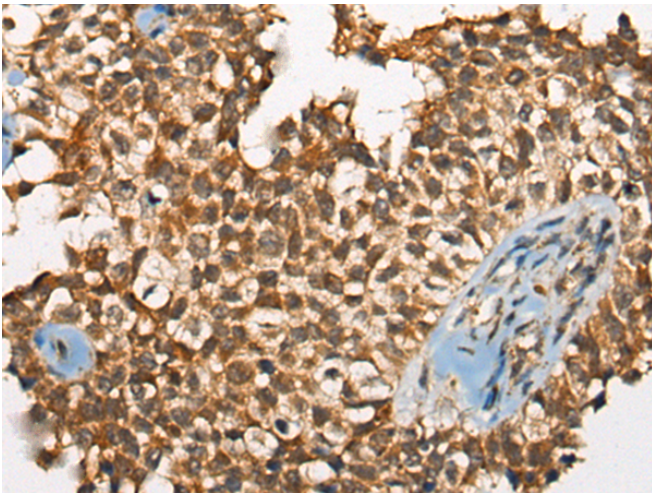
纯化: Antigen affinity purification

种属反应性: Human, Mouse, Rat

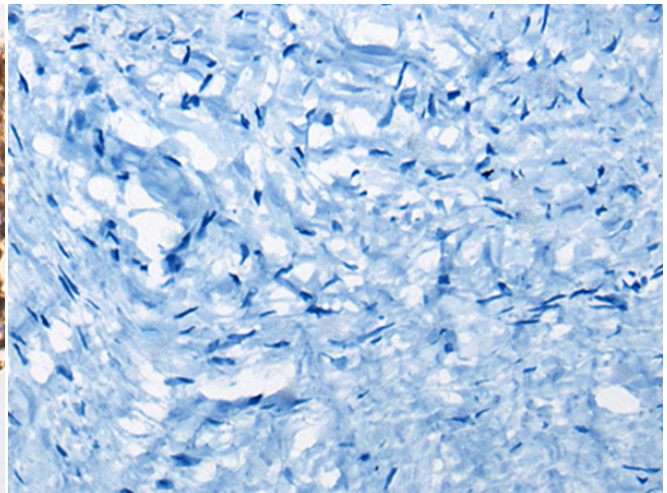
成分: PBS (without Mg²⁺ and Ca²⁺), pH 7.4, 150 mM NaCl, 0.05% Sodium Azide and 40% glycerol

研究领域: Epigenetics and Nuclear Signaling, Cancer, Developmental Biology

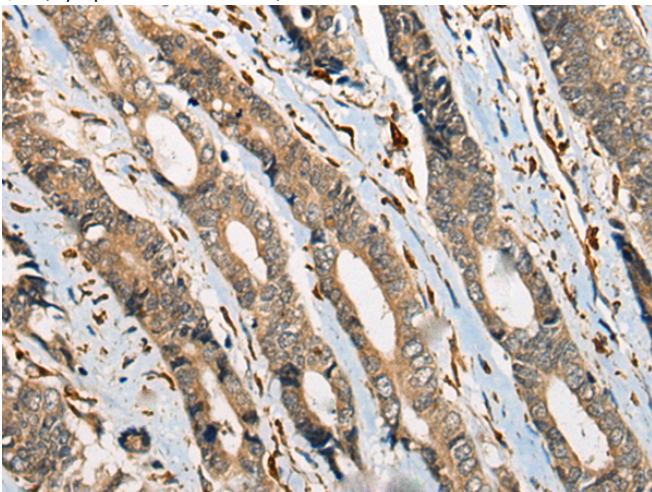
储存和运输: Store at -20°C. Avoid repeated freezing and thawing



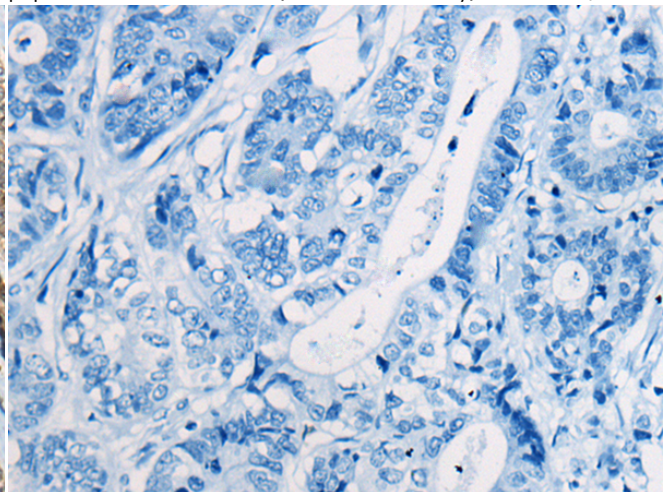
Immunohistochemistry analysis of paraffin embedded Human ovarian cancer tissue using 221717(ODF2 Antibody) at a dilution of 1/110(Cytoplasm and Nucleus).



In comparison with the IHC on the left, the same paraffin-embedded Human ovarian cancer tissue is first treated with the synthetic peptide and then with 221717(Anti-ODF2 Antibody) at dilution 1/110.



The image on the left is immunohistochemistry of paraffin-embedded Human gastric cancer tissue using 221717(Anti-ODF2 Antibody) at a dilution of 1/110.



In comparison with the IHC on the left, the same paraffin-embedded Human gastric cancer tissue is first treated with synthetic peptide and then with D268430(Anti-ODF2 Antibody) at dilution 1/110.



Product Description

Pioneering GTPase and Oncogene Product Development since 2010
