

## ODF2 RABBIT PAB

货号: S217661

产品全名: ODF2 兔多抗

基因符号 CT134; ODF84; ODF2/1; ODF2/2

**UNIPROT ID:** Q5BJF6 (Gene Accession - BC010629)

**背景:** The outer dense fibers are cytoskeletal structures that surround the axoneme in the middle piece and principal piece of the sperm tail. The fibers function in maintaining the elastic structure and recoil of the sperm tail as well as in protecting the tail from shear forces during epididymal transport and ejaculation. Defects in the outer dense fibers lead to abnormal sperm morphology and infertility. This gene encodes one of the major outer dense fiber proteins. Alternative splicing results in multiple transcript variants.

**抗原:** Fusion protein of human ODF2

**经过测试的应用:** ELISA, WB, IHC

**推荐稀释比:** IHC: 25-100;WB: 500-2000;ELISA: 2000-5000

**种属反应性:** Rabbit

**克隆性:** Rabbit Polyclonal

**亚型:** Immunogen-specific rabbit IgG

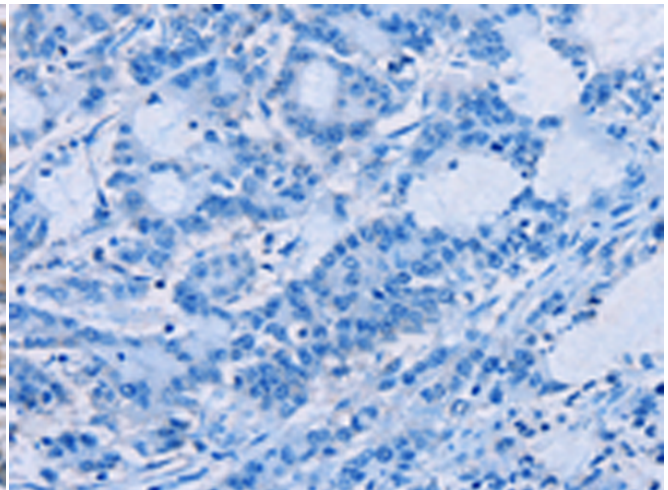
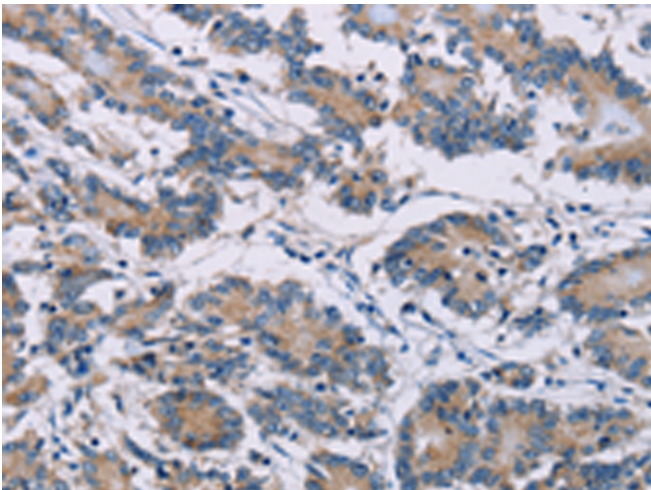
**纯化:** Antigen affinity purification

**种属反应性:** Human, Mouse, Rat

**成分:** PBS (without Mg<sup>2+</sup> and Ca<sup>2+</sup>), pH 7.4, 150 mM NaCl, 0.05% Sodium Azide and 40% glycerol

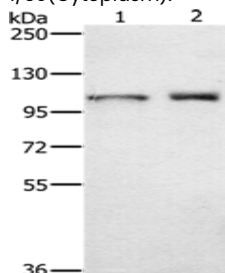
**研究领域:** Epigenetics and Nuclear Signaling, Cancer, Developmental Biology

**储存和运输:** Store at -20°C. Avoid repeated freezing and thawing



Immunohistochemistry analysis of paraffin embedded Human colon cancer tissue using 217661(ODF2 Antibody) at a dilution of 1/30(Cytoplasm).

In comparison with the IHC on the left, the same paraffin-embedded Human colon cancer tissue is first treated with the fusion protein and then with 217661(Anti-ODF2 Antibody) at dilution 1/30.



Gel: 6%SDS-PAGE, Lysate: 40 µg;

Lane 1-2: Human testis tissue, K562 cells;

Primary antibody: 217661(ODF2 Antibody) at dilution 1/650;

Secondary antibody: Goat anti rabbit IgG at 1/8000 dilution;

Exposure time: 30 seconds