

OAZ1 RABBIT PAB

货号: S222450

产品全名: OAZ1 兔多抗

基因符号: AZI; AZI; OAZ

UNIPROT ID: P54368 (Gene Accession - NP_004143)

背景: The protein encoded by this gene belongs to the ornithine decarboxylase antizyme family, which plays a role in cell growth and proliferation by regulating intracellular polyamine levels. Expression of antizymes requires +1 ribosomal frameshifting, which is enhanced by high levels of polyamines. Antizymes in turn bind to and inhibit ornithine decarboxylase (ODC), the key enzyme in polyamine biosynthesis; thus, completing the auto-regulatory circuit. This gene encodes antizyme 1, the first member of the antizyme family, that has broad tissue distribution, and negatively regulates intracellular polyamine levels by binding to and targeting ODC for degradation, as well as inhibiting polyamine uptake. Antizyme 1 mRNA contains two potential in-frame AUGs; and studies in rat suggest that alternative use of the two translation initiation sites results in N-terminally distinct protein isoforms with different subcellular localization. Alternatively spliced transcript variants have also been noted for this gene.

抗原: Synthetic peptide of human OAZ1

经过测试的应用: ELISA, IHC

推荐稀释比: IHC: 50-200; ELISA: 5000-10000

种属反应性: Rabbit

克隆性: Rabbit Polyclonal

亚型: Immunogen-specific rabbit IgG

纯化: Antigen affinity purification

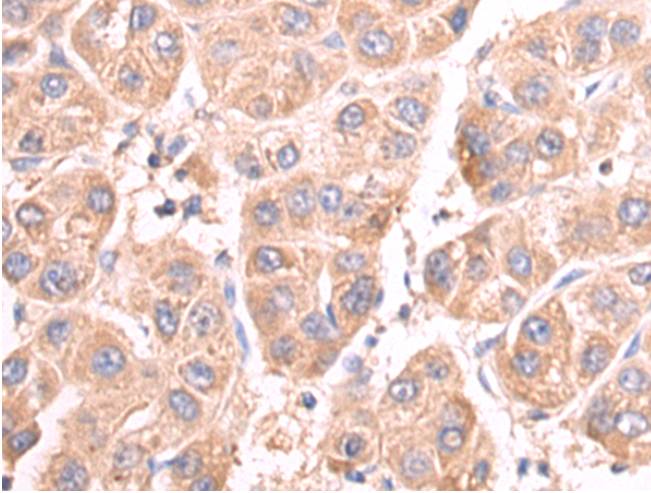
种属反应性: Human, Mouse, Rat

成分: PBS (without Mg²⁺ and Ca²⁺), pH 7.4, 150 mM NaCl, 0.05% Sodium Azide and 40% glycerol

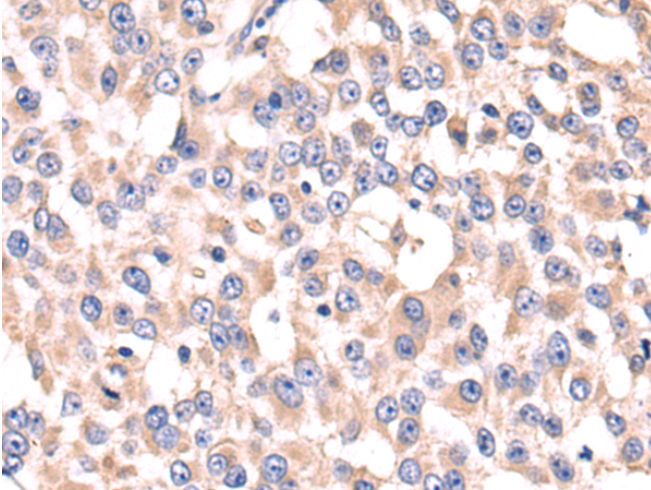
研究领域: Metabolism

储存和运输: Store at -20°C. Avoid repeated freezing and thawing

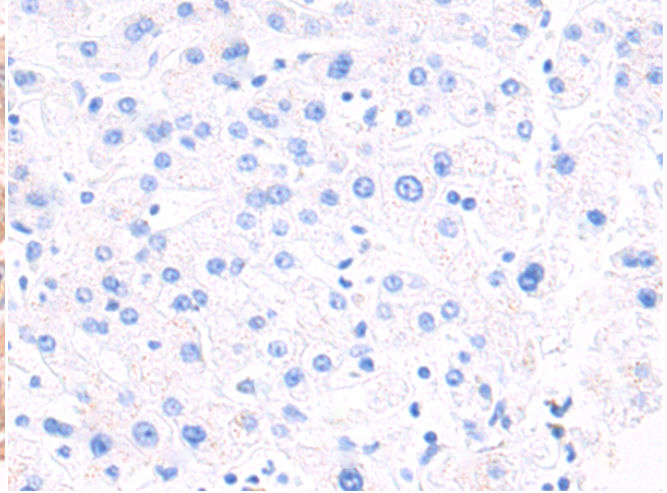
Product Description



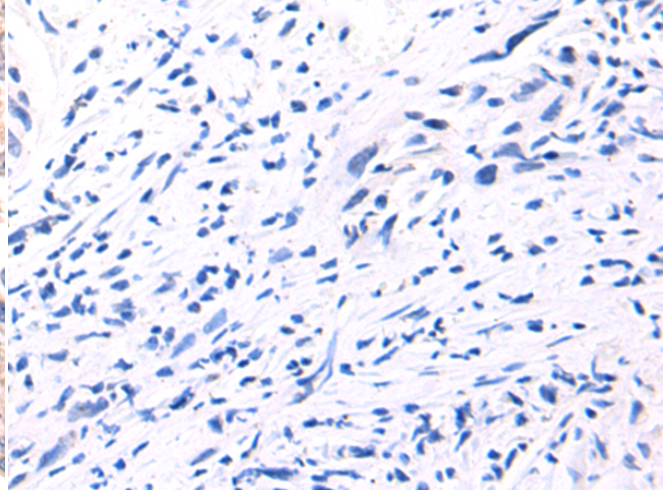
Immunohistochemistry analysis of paraffin embedded Human liver cancer tissue using 222450(OAZ1 Antibody) at a dilution of 1/50(Cytoplasm).



The image on the left is immunohistochemistry of paraffin-embedded Human bladder cancer tissue using 222450(Anti-OAZ1 Antibody) at a dilution of 1/50.



In comparison with the IHC on the left, the same paraffin-embedded Human liver cancer tissue is first treated with the synthetic peptide and then with 222450(Anti-OAZ1 Antibody) at dilution 1/50.



In comparison with the IHC on the left, the same paraffin-embedded Human bladder cancer tissue is first treated with synthetic peptide and then with D264629(Anti-OAZ1 Antibody) at dilution 1/50.