

NXNL1 RABBIT PAB

货号: S218838

产品全名: NXNL1 兔多抗

基因符号: RDCVF; TXNL6

UNIPROT ID: Q96CM4 (Gene Accession - BC014127)

背景: Retinitis pigmentosa (RP) is a disease that leads to blindness by degeneration of cone photoreceptors. Rods produce factors required for cone viability. The protein encoded by this gene is one of those factors and is similar to a truncated form of thioredoxin. This gene has been proposed to have therapeutic value against RP.

抗原: Fusion protein of human NXNL1

经过测试的应用: ELISA, WB, IHC

推荐稀释比: IHC: 20-100;WB: 200-1000;ELISA: 5000-10000

种属反应性: Rabbit

克隆性: Rabbit Polyclonal

亚型: Immunogen-specific rabbit IgG

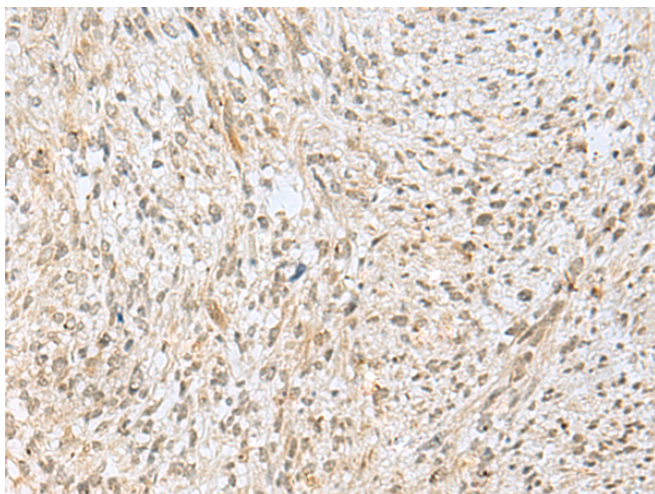
纯化: Antigen affinity purification

种属反应性: Human

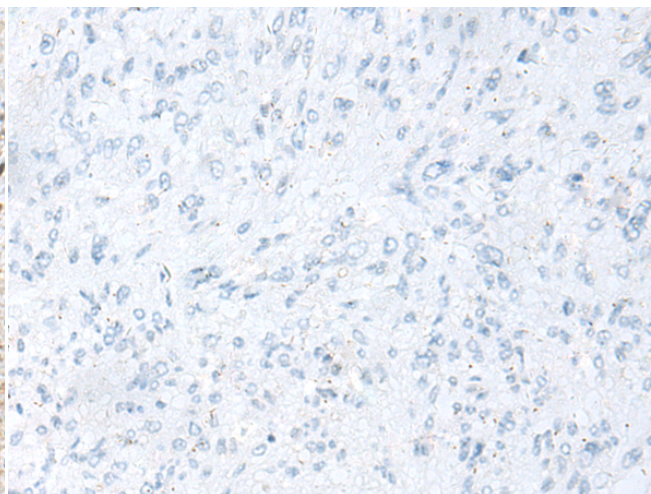
成分: PBS (without Mg²⁺ and Ca²⁺), pH 7.4, 150 mM NaCl, 0.05% Sodium Azide and 40% glycerol

研究领域: Cell Biology

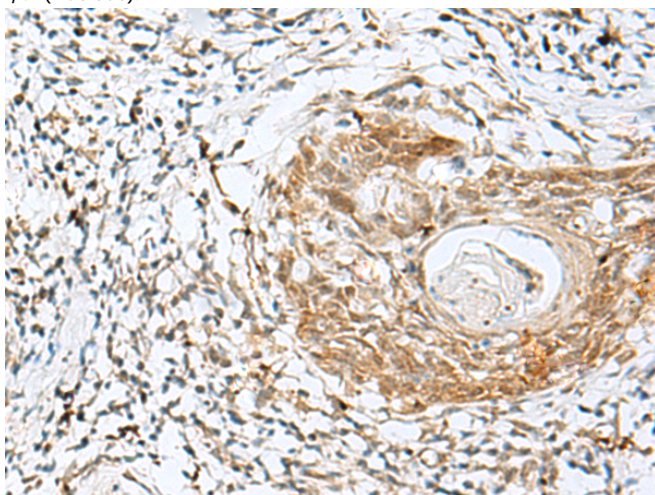
储存和运输: Store at -20°C. Avoid repeated freezing and thawing



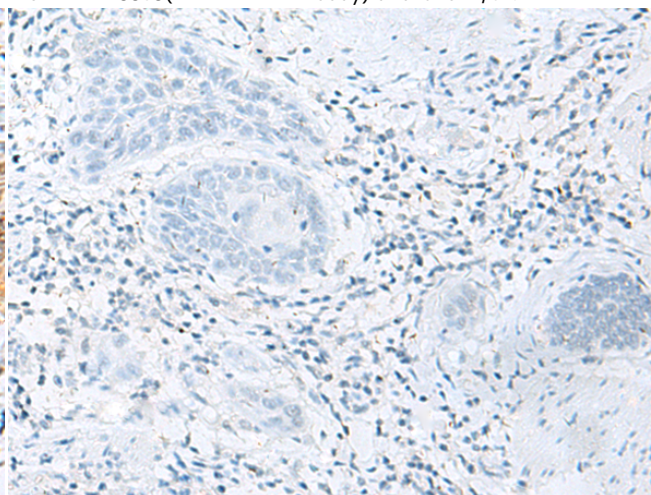
Immunohistochemistry analysis of paraffin embedded Human liver cancer tissue using 218838(NXNLI Antibody) at a dilution of 1/30(Nucleus).



In comparison with the IHC on the left, the same paraffin-embedded Human liver cancer tissue is first treated with the fusion protein and then with 218838(Anti-NXNLI Antibody) at dilution 1/30.

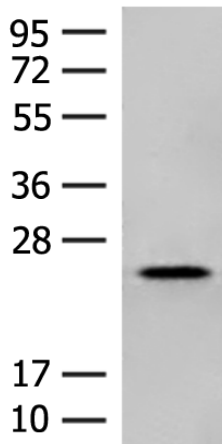


The image on the left is immunohistochemistry of paraffin-embedded Human esophagus cancer tissue using 218838(Anti-NXNLI Antibody) at a dilution of 1/30.



In comparison with the IHC on the left, the same paraffin-embedded Human esophagus cancer tissue is first treated with fusion protein and then with D225322(Anti-NXNLI Antibody) at dilution 1/30.

kDa



Gel: 12%SDS-PAGE, Lysate: 40 µg;

Lane: A549 cell lysate ;

Primary antibody: 218838(NXNLI Antibody) at dilution 1/200;

Secondary antibody: Goat anti rabbit IgG at 1/8000 dilution;

Exposure time: 30 seconds



Product Description

Pioneering GTPase and Oncogene Product Development since 2010
