

NXF1 RABBIT MAB

货号: N262639

产品全名: NXF1 兔单克隆抗体

基因符号 DmNXF1; MEX67; Mex67p; Mvb1; NXF1; Sbr; TAP

UNIPROT ID: Q9UBU9

背景: Involved in the nuclear export of mRNA species bearing retroviral constitutive transport elements (CTE) and in the export of mRNA from the nucleus to the cytoplasm. The NXF1-NXT1 heterodimer is involved in the export of HSP70 mRNA in conjunction with THOC4 and THOC5.

抗原: A synthetic peptide of human NXF1

经过测试的应用: WB,IHC-F,IHC-P,ICC/IF,IP

推荐稀释比: WB: 1/500-1/1000 IHC: 1/50-1/100 IF: 1/50-1/200 IP: 1/20

种属反应性: Rabbit

克隆性: Rabbit Monoclonal

克隆编号: R05-1C3

分子量: Calculated MW: 70 kDa; Observed MW: 70 kDa

亚型: IgG

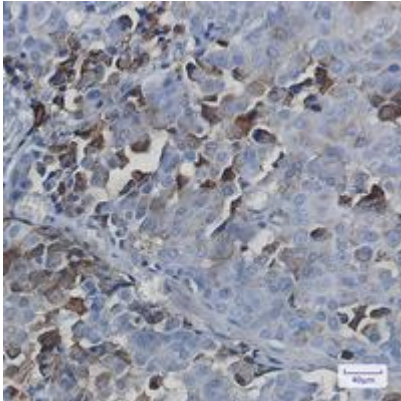
纯化: Affinity Purified

种属反应性: Human

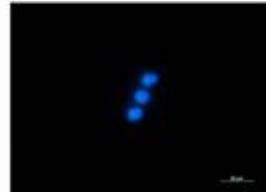
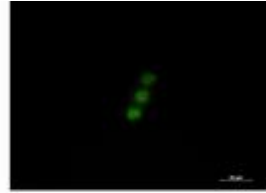
成分: PBS (without Mg²⁺ and Ca²⁺), pH 7.3 containing 50% glycerol, 0.5% BSA and 0.02% sodium azide

研究领域: Tags & Cell Markers

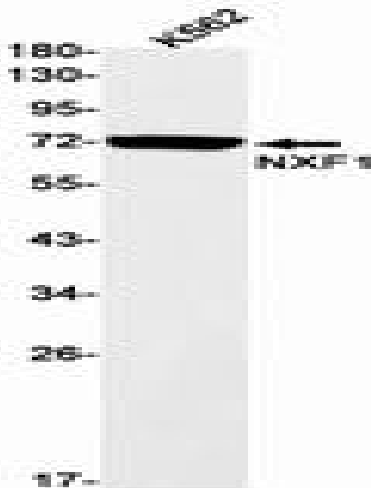
储存和运输: Store at -20°C. Avoid repeated freezing and thawing



Immunohistochemistry analysis of paraffin-embedded Human breast cancer tissue using NXF1 antibody. High-pressure and temperature Sodium Citrate pH 6.0 was used for antigen retrieval.



Immunocytochemistry analysis of NXF1 (green) in Jurkat using NXF1 antibody, and DAPI (blue).



Western blot analysis of NXF1 in K562 lysates using NXF1 antibody.